

# ***Oakington & Westwick***

**Aug/Sep 2021**

## ***Journal***

**School is 150**

**Slugs and Snails**

**Potholes and Planning**



## What's On & Notices

Every Tuesday	<b>Table Tennis</b> , 7:30pm. Pavilion, £2.50. Gillian L'angellier – C 234 758
Every Thursday	<b>Ten Sing</b> , 7–9pm. Histon Baptist Church. (Sept onwards.) Terry King – <a href="mailto:cambridgetensing@gmail.com">cambridgetensing@gmail.com</a>
Every Friday	<b>Tool Share</b> open, usually 4:30–6pm. Contact <a href="mailto:gerard@cambridgereuse.org.uk">gerard@cambridgereuse.org.uk</a> / 07857 704636
Sat 31 July	<b>Village Picnic</b> , 2 – 5pm. Recreation Ground
Thu 5 Aug	<b>Village Walk</b> , 7:30pm. Meet by church on High Street. Alice – <a href="mailto:alice3000@mail.ru">alice3000@mail.ru</a>
Fri 20 Aug	'Anchored' <b>Youth Conference</b> , 2 days. St Andrew's church. <a href="http://standrewsoakington.co.uk/anchored">standrewsoakington.co.uk/anchored</a>
Sun 5 Sep	<b>Tea &amp; Jazz</b> by the lake, 3–5pm. 9 Longstanton Road. £5/£1. <a href="mailto:owneighbours@gmail.com">owneighbours@gmail.com</a>
Thu 9 Sep	<b>O&amp;W WI</b> , 7:30pm. Church Hall (or Zoom). Helen Williams – C 232 614 / <a href="mailto:helenwilliams5@outlook.com">helenwilliams5@outlook.com</a>
Mon 13 Sep	<b>O&amp;W Parish Council</b> , 7:30pm. Pavilion. All invited – contact <a href="mailto:clerk@oakingtonandwestwick-pc.gov.uk">clerk@oakingtonandwestwick-pc.gov.uk</a>
Mon 13 Sep	<b>Board Games Evening</b> , 7:30pm. By Zoom. Jenny Prince – <a href="mailto:oakingtongames@gmail.com">oakingtongames@gmail.com</a>
Fri 17 Sep	<b>Coffee Morning</b> , 10am – 1pm. 47 Longstanton Road. In aid of Macmillan
Fri 24 Sep	<b>School 150<sup>th</sup> Anniversary Celebration</b> , 3:15–5pm. School. <a href="mailto:office@oakington.cambs.sch.uk">office@oakington.cambs.sch.uk</a>

### BIN DAYS

Thu 5 Aug, Thu 19 Aug, **Fri 3 Sep**, Thu 16 Sep, Thu 30 Sep **Black bin**

Thu 12 Aug, Thu 26 Aug, Thu 9 Sep, Thu 23 Sep **Blue & green bins**

Cover photo: Dave Prince



There is a **DEFIBRILLATOR** at the pavilion (hanging outside the patio doors). If you come across someone who has had a cardiac arrest, call 999 and start CPR, while sending someone to fetch the defibrillator – open box, take out defibrillator, shut box (alarm goes off), open defibrillator and it talks to tell you what to do.

Last chance to vote on the Recreation Ground development by signing one of the flyers sent out in the last two issues, or online at [oakrec.org/](http://oakrec.org/)

**Correction:** the email address for the Tool Share given in the last issue should be: [gerard@cambridgereuse.org.uk](mailto:gerard@cambridgereuse.org.uk)

20th & 21st August 2021

**Anchored**  
St Andrew's Church  
Oakington  
Youth Conference  
11 – 25 years old

Register Free @ [Standrewsoakington.co.uk/anchored](http://Standrewsoakington.co.uk/anchored)



**Oakington**  
C of E Primary School

### We Need You...

If you think you may have information, photos or artefacts related to the history of Oakington C of E Primary School, please contact the school office:

01223 232328 – [office@oakington.cambs.sch.uk](mailto:office@oakington.cambs.sch.uk)

Also, if you would like to be involved in planning/helping at the 150<sup>th</sup> Anniversary event on 24<sup>th</sup> September (see back page), please contact the school.

Nathan Clark, Headteacher

Oakington & Westwick Sports Pavilion Monthly Lottery 2021 - Winners			
Month	Ticket No	Area or Winner	Winnings
May	<b>614</b>	Somersham	<b>£100</b>
June	<b>204</b>	A Village Club / Group	<b>£100</b>
July	<b>642</b>	Saxon Close	<b>£100</b>

If you would like to enter the lottery, please text JOIN plus your name, house number & postcode to 07831 828898.

## Print-Out

### Litho and Digital Printing

Mono & colour copying

Plan printing

Colour inkjet up to A0

Full price list online [www.print-out.co.uk](http://www.print-out.co.uk)

**01223 232709**

8-10 High Street Histon Cambridge CB24 9JD

This issue should hit your doormat the same weekend as the postponed village picnic. Coming up in the calendar (coronavirus permitting) are the Lakeside Tea and Jazz event and a rather special birthday party. Oakington C of E Primary School celebrates 150 years on 24<sup>th</sup> September, and invites the whole community to join in.

The school has been a big part of the lives of so many people here: the children attending now, and their families; those who have grown up in the village and went to the school years ago; those for whom the daily ritual of taking and

collecting offspring led to friendships which have endured for decades. The school would be pleased to hear from anyone with stories or photos to share.

More groups are proposing to restart their activities this autumn, depending on the opening up of venues. But for now, best wishes for a safe and sunny summer!



*Irène Butlin & Jenny Prince,  
Editors*

*The Journal is published on behalf of the Oakington & Westwick Community Association, to inform residents about events, activities and issues in the parish. It's delivered free to all residents and is funded by advertising, the Parish Council and the Community Association.*

Journal Team:

Jenny Prince & Irène Butlin (editors), Ranko Pinter (chair), Jenny Broadway (distribution), Jan Zelnick (advertising), Geoffrey Butlin (adviser).

Send contributions to  
**[oakwestjournal@gmail.com](mailto:oakwestjournal@gmail.com)**

or phone: 233510 (Jenny)  
or 234383 (Irène)

DEADLINE FOR  
OCTOBER/NOVEMBER ISSUE:  
**Tuesday 21 September**

To advertise in the Journal,  
please email  
**[oakwestjournal@gmail.com](mailto:oakwestjournal@gmail.com)**

Adverts	For 1 year	One off
Business card	£69	£16
¼ page (portrait)	£102	£27
½ page (landscape)	£198	£48

Adverts for the next issue must be received by **14 September**.

*Inclusion of an advertisement does not imply endorsement by the Oakington & Westwick Journal of the product or service advertised.*

## Net Zero Now

Earlier in the year Cambridge Carbon Footprint announced an online course they would be running with support from South Cambridgeshire District Council's Zero Carbon Communities Fund, titled 'Net Zero Now'.

The course was made available to South Cambs Districts, but not the city, with only a limited number of places available, and comprises eight, two-hour Zoom sessions held between June and October.

At the first session I was relieved to find out that ours is not the only community without a Climate Action Group of some description; although our local groups are very aware of local and global environmental concerns, climate collapse is not their main focus.

Reaching UK carbon emissions targets, a 78% reduction by 2035 compared to 1990 levels, won't be possible without individual and community involvement, as household activities are linked to around two-thirds of all emissions.

Approximately 60% of the changes needed to reach net zero by 2050 will require changes to the way we live our lives. We'll need to reduce energy use, make changes to the way we travel, what we eat, how much we buy and how we dispose of things. This means that in the coming months and years each individual and community will need to find positive ways to adapt, change and thrive as we move towards net zero emissions.

The government has to act at some point to enable low-carbon lifestyles through system change. Also social norms need to start to shift, through education of the public, media and lessening the influence of fossil fuel.

On the course I'm learning about various carbon reduction projects created by communities and individuals, using obsolete government grants. These projects show what can be achieved and if and when the government chooses to act, are we as a community ready to respond?

*Paul Kershaw*



## Welcome a New Neighbour

If somebody has moved in near you, a village 'Welcome' leaflet will help them feel at home. This has a map of the villages and some key information for new residents.

Either let Bruce Sutherland know and he will deliver one, or pick one up from him and take it yourself – it's a good excuse to knock on the door and say hello!

Contact: Bruce Sutherland, [brucessutherland@aol.com](mailto:brucessutherland@aol.com) or 07730 817350





# PEST PROBLEM?

LOCAL, PROFESSIONAL, TRUSTED

**DRE Pest Control**



Rapid, qualified and safe **pest control**.

Residential, farms, commercial premises, hotels, hospitals, schools & businesses.

Removal of **rats, mice, ants, fleas, cockroaches, & wasps.**

Are you looking for **one-off, emergency or long-term** pest management solutions?

Contact  
**DRE Pest Control**  
today!

**07789 502556**

**01954 230708**

drepestcontrol.co.uk  
info@drepestcontrol.co.uk



19 WALLMANS LANE  
SWAVESEY  
CAMBRIDGE  
CB24 4QY



**HATTONS**

**FENCE POST REPAIR**

www.hattonspostrepair.co.uk

**ROTTEN, LEANING  
BROKEN FENCE  
POSTS FIXED**

**Fixed Price.  
Fully Inclusive of Materials &  
Labour**

Email: hello@hattonspostrepair.co.uk  
Telephone or Text 07724 115 263

**Green Heat  
Limited**

PHONE FOR A FREE NO OBLIGATION QUOTATION

**01223 277278**

**Special Offer:**  
Free magnetic system  
filter **worth over  
£200** with all new  
boilers installed



**Smart new high efficiency 'A' rated condensing boilers are over 90% efficient, and will provide you with greater comfort, saving energy and reducing fuel bills.**



Smart heating controls can add a further 4% efficiency and allows you to control your heating from your smart phone or tablet when away from your home. We also have some great solutions to improve hot water efficiency such as 'flue gas heat recovery', enabling efficiencies of nearly 100% to be achieved.

Call Green Heat now to arrange a free visit and receive some expert advice from qualified heating engineers with over 50 years experience of providing home comfort.



Green Heat Limited: 27 Fairway, Girton, Cambs, CB3 0QF  
info@greenheat.uk.com • www.greenheat.uk.com

### Parish Councillors

**Chair:** Stephen Moore

*chair@oakingtonandwestwick-pc.gov.uk*

**Vice-Chair:** Tony Starling

John Bailey	Ranko Pinter
Geoffrey Butlin	David Reeves
Julie Grove	Lis Warboys
Luis Navarro	

**Email address** for all councillors

*clerk@oakingtonandwestwick-pc.gov.uk*

### Parish Website

[www.oakingtonandwestwick-pc.gov.uk](http://www.oakingtonandwestwick-pc.gov.uk)

### Correspondence to the Council should be addressed to the Clerk:

Mrs Laura Lawrence – Email:

*clerk@oakingtonandwestwick-pc.gov.uk*

Post: 4 Meadow Farm Close  
Oakington CB24 3AS

Phone: 01223 232398

### District Councillors

Sarah Cheung Johnson – 01954 489089

*cllr.cheungjohnson@scambs.gov.uk*

Alex Malyon – 01954 202859

*cllr.malyon@scambs.gov.uk*

### County Councillor

Oakington, Westwick,  
Longstanton, Northstowe & Over

Firouz Thompson – 07974 680875

*firouz.thompson@cambridgeshire.gov.uk*

### Member of Parliament

Anthony Browne – 01223 662171

*anthony.browne.mp@parliament.uk*

## VILLAGE INFORMATION

### Neighbourhood Watch

Jillian Wilkinson – 01223 233585

*oakwestnhw@gmail.com*

### Oakington & Westwick Neighbours (OWN)

07902 111786 or 07375 945284

*OWNeighbours@gmail.com*

### Oakington Primary School

01223 232328

*office@oakington.cambs.sch.uk*

### Pavilion Booking Administrator

Tony Leadley – 07936 024587

*oakingtonpavilion@gmail.com*

### Village Stores & Post Office

Thiru Kunaratnam – 01223 232327

## From our Parish Council Chair

The sun is shining, the birds are singing – it is a wonderful summer's day! Sadly I have to start by reporting some unwelcome news.

**Disappointments.** You may have heard about 106 funding; essentially, it is money developers have to give to pay for additional facilities when new housing is constructed. As you all know by now, we are having 10,000 homes being built on our doorsteps. So far, from this we have been allocated some funding for flood prevention from Phase 2. Recently, planning permission for the final tranche of 5,000 homes has been applied for and we will receive precisely *NOTHING!* This is despite the fact that these houses will be within a hundred yards of us in some places.

We are facing ten years of noise, pollution and disruption from building works and yet there will be no benefits to the villagers! The argument against providing us with any benefits is that we will be lucky enough to enjoy the facilities of Northstowe when it is finally built. There have been a few incidental benefits to Oakington and Westwick, such as the improved cycleway in Cambridge Road and a footpath – but these are only provided as they can be used by Northstowe residents and are beneficial to them.

So, this response that the new facilities in Northstowe will be adequate compensation for ten years of building works there, omits the fact that there is no guarantee that any of the facilities will be open to us. One example is that parents from Oakington will not have any right to choose to send their children to the secondary school in Northstowe. The refusal to benefit Oakington and Westwick with a few improvements to the recreation ground, is upsetting.

(I do not blame our local planners in any way – the principal planner has gone out of his way to explain the issues and the limits of his powers.)

**Building relationships with Northstowe.** It is with these concerns in mind, regarding accessing Northstowe organisations, that I am meeting members of the Northstowe Town Council in late August, to forge a close and warm relationship with our large new neighbour.

**Threat from Millen Homes.** You may have heard that Millen Homes are proposing to apply for planning permission for the field behind Manor Farm Close. This would be a disaster for the village and would wipe out a significant proportion of the green space between us and Northstowe. The Parish Council has let Millen Homes know in robust terms that we strongly oppose any application. We know that our District Councillors, Sarah Cheung-Johnson and Alex Malyon, are also strongly opposed to any application.

**Highways England Flooding Report delay.** Some years ago now (2015?), funding was negotiated for flooding measures. We know that SCDC planning office strongly supports the need for flood prevention measures and is trying to have these installed at the earliest opportunity. However, Highways England need to provide a report on the impact of the new A14 on flood issues, causing further delays.

**Quality of village life.** There are things the Parish Council can do to improve the quality of life in the village and there are things that *individuals* can do. Thank you to those who give their time and energy, e.g. to improve the facilities on the recreation ground for the young people's football. However, *playing golf* on the rec is potentially dangerous and some people are currently frightened to use the rec for fear of being hit by a golf ball.

**Some positive things.** Homes England's planning application for a large electrical substation just off Station Road has been withdrawn. The Parish Council had strongly objected to it.

The cemetery renovation is almost complete with the new benches due to be installed any time.

We are now turning our attention to revamping Stocks Green. All to be revealed!

Dr Stephen Moore







## BLUE HOUSE Computer Help

SPEED UP, FIX UP, OR UPGRADE YOUR PC

**COVID FRIENDLY**  
MOST WORK CAN  
BE CARRIED OUT  
REMOTELY

**SAVE MONEY**  
\*  
**GAIN SPEED**  
\*  
IF IT RUNS LIKE  
TREACLE, DON'T  
THROW IT OUT.  
Take advantage of  
our computer  
optimisation and  
upgrade services.

PROFESSIONAL  
INDEMNITY AND  
PUBLIC LIABILITY  
INSURANCE  
REPAIRS COME WITH  
A 100 DAY  
GUARANTEE

**SOME OF OUR  
SERVICES:**  
Getting broken  
computers up and  
running, even when  
Windows won't start  
Upgrades for extra  
speed and space  
Transfer your apps  
and files to a new PC  
Networking and  
WiFi dead spots  
Sync files between  
devices  
Virus and malware  
clean-up

**LOAN OF A  
LAPTOP  
FOR BIGGER  
JOBS**

We love keeping  
your old  
computers in  
service and out  
of landfill. In fact,  
we can make  
them work even  
*better*  
than when they  
were brand new

**WANT SOME  
HELP?**

CALL **01223 85 30 20**

hello@bluehouse.help | www.bluehouse.help  
Find us on Facebook  
BLUE HOUSE COMPUTER HELP, CAMBRIDGE ROAD, OAKINGTON

## **Rothwell's** Carpet & Stone Floor Cleaning

### **Carpet Cleaning & Stone Floor, Upholstery, Rugs**

*A few points that make us stand out:*

Rothwell's has been in business since 1993.

We're an honest local family firm.

Our large truck mounted machines mean  
more cleaning & drying power  
for the best results possible.

Members of both the NCCA and TACCA.

We will move the furniture.

100% satisfaction or it's FREE.

*Call Oliver and Max Campbell  
for expert help today.*

**01223 832 928 / 01638 428 060**  
**www.Rothwells.biz**

## Brookfield Groundcare

A family run business providing a quality and professional service to all  
aspects of hard and soft landscaping.

- Grass cutting
- Hedge trimming
- Tree surgery
- Fencing
- Paving
- Hedge & tree planting
- Turf laying
- Sports field maintenance
- Paddock maintenance




Contact us to discuss your needs  
Daniel Wright 07812 670039 Office 01954 252953  
Email [brookfieldcontracting@gmail.com](mailto:brookfieldcontracting@gmail.com) [www.brookfieldgroundcare.com](http://www.brookfieldgroundcare.com)

### From our District Councillors

#### Call for Sites Oakington

The “Call for Sites” is part of the process of developing something called a Local Plan, which will set out how and where development should happen across the area. It’s where Developers and landowners were invited to put forward sites where they want to build houses across South Cambs District. The Council are set targets by central government for housebuilding which we must meet. If we do not, then the government can take away the powers of the local councils as the planning authority and with that the power of local people to be involved in making decisions about what is built in their area.

When we previously had no Local Plan in South Cambs we saw lots of speculative developments approved in local villages despite residents’ objections - for example, the 500 houses in Cottenham, which Oakington will feel the traffic impact of. Since we were elected in 2018 and the new LibDem administration finally approved a Local Plan for South Cambs, we have had zero speculative developments approved. We are now in the process of developing the next Local Plan, which this time will be a joint plan with Cambridge City.

Over 600 sites were put forward across the District in this call for sites, including sites in Oakington. Sites in Oakington are mainly off Water Lane, including one for sheltered accommodation that we understand has now been proposed for an alternate site not on this map.

As District Councillors we would oppose the inclusion of additional sites in Oakington as we believe the demand locally for affordable housing is being more than adequately met by Northstowe. However, we would be guided by the

Parish Council and residents’ views especially on smaller housing parcels which might be acceptable to the community. However, we stress there is at this stage no decision on whether any sites in Oakington would be included. There will be further consultations in Autumn.

The easiest way to view these is via the **online interactive map** which you can find by following the link below. Search via postcode to see sites near you and click on the map to see further details of what is being proposed. As in the previous plan it is likely that only a fraction of the over 600 sites put forward will be chosen - only 10% of submitted sites were ultimately included in the last Local Plan.

[www.greatercambridgeplanning.org/emerging-plans-and-guidance/greater-cambridge-local-plan/document-library/site-submissions/](http://www.greatercambridgeplanning.org/emerging-plans-and-guidance/greater-cambridge-local-plan/document-library/site-submissions/)

#### Millen Homes, Manor Farm Close

As District Councillors we have not been directly contacted by the developers for this site but include this for information.

The site forms part of the wider Northstowe allocation and backs on to Manor Farm Close. The Northstowe green separation policies would be a significant hurdle for this application. There are also matters of ecology, access, and the field drain to deal with (amongst others). We know that the parish council will raise their concerns/comments with the developer and we as councillors will fully support their objections to this proposal.

*Sarah Cheung Johnson  
and Alex Malyon*



### From our County Councillor

Happy summer everyone, whether you are going away, staying at home with family or catching up with friends.

Our businesses, who rely heavily on the tourist economy, are hoping for some good times ahead to help their recovery from the pandemic. We can help by supporting our local businesses all year round.

**Covid-19 recovery.** Residents in Cambridgeshire are being urged to continue to do the right thing and play their part to tackle Covid-19 by getting double vaccinated, taking a Covid test if they have virus symptoms and self-isolating if they test positive. At the time of writing, there is an increase of 33% in infection rates, highest in under 30s, and approx. 40% of our population is yet to be fully vaccinated.

Following announcement of easing of restriction, helping to prevent the virus spreading remains vital, especially with more people likely to be out and about.

For the latest information on walk-in clinics, please visit [www.cambridgeshireandpeterboroughhccg.nhs.uk](http://www.cambridgeshireandpeterboroughhccg.nhs.uk)

**Children and young people.** The latest government funding grant for free school meals during the summer holidays didn’t cover the demand across the County. At the first meeting of the County Council Children and Young People Committee, members voted to provide £537k for additional funding to provide both supermarket vouchers and 4-weeks free holiday childcare for all eligible families.

**Highways.** A problem area for the council is road maintenance, especially potholes and blocked road gullies. I am sure you are painfully aware of the short term nature of much of the work. There is a backlog and as the new administration we are not able to rectify problems overnight, but the new team is going to look critically at contracts and quality of work and drive improvements as soon as they can.

I have set up Quarterly Highways meetings with Parish Councils and the Local Highways Officer. The next one is in September to look at backdated and current issues.

#### Shared-use path improvements Oakington - Girton.

The County Council has recently finished Phase 1 of widening the shared-use path along Oakington Road between Brook and Gatehouse Road, to benefit walking and cycling. This was funded by Highways England, as mitigation for the A14 works. Phase 2 will look to primarily widen the path from Gatehouse Road to Oakington, subject to design. This will be funded by S106 money from Northstowe. The design will go to the Parish Council September meeting.

**Potholes.** Several potholes across Oakington have been marked and works to complete will be within 21 days. It is confirmed that 15 potholes were filled in Queensway.

*Firouz Thompson*







## STEPHEN GRAY – CeMAP

‘Your local Mortgage Broker’

Living in Oakington – Formerly of Mortgage Quest  
Serving the residents of Oakington and Westwick  
for 5 years

‘For all mortgage scenarios’

Residential and BTL mortgage advice  
Loans for businesses  
Protecting your debt and family assets

Evening and weekend appointments available

For more information, please call

Mobile – 07584 121473

Email – [stephen.gray22@sky.com](mailto:stephen.gray22@sky.com)

Your home may be repossessed  
if you do not keep up the repayments on your mortgage

## ARCHITECTURAL DRAWINGS

FOR

PLANNING & BUILDING REGULATION  
APPLICATIONS

EXTENSIONS, ALTERATIONS, LOFT  
CONVERSIONS ETC

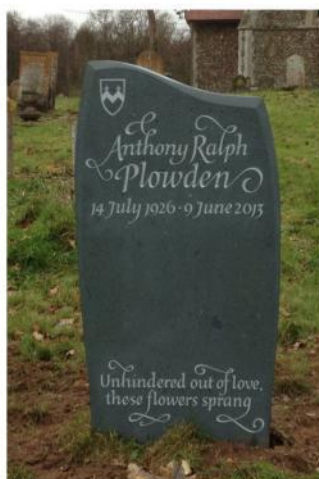
CONTACT US now to arrange a **FREE**  
on-site meeting at your convenience to  
discuss your project

**01353 649649**

[mail@elydesigngroup.co.uk](mailto:mail@elydesigngroup.co.uk)

**ELY DESIGN GROUP**

[www.elydesigngroup.co.uk](http://www.elydesigngroup.co.uk)



Pippa  
Westoby  
LETTER CARVER

I'm a Lettering artist based in Cambridge. My work consists of hand carved memorials, house plaques, garden ornaments, and painted lettering for births, anniversaries and weddings. All my work is bespoke. You can see more of my work on my website : [www.pippawestoby.co.uk](http://www.pippawestoby.co.uk) or on my Facebook page : Letter Carving in Stone - Pippa Westoby.

Contact email :  
[pippa\\_westoby@yahoo.co.uk](mailto:pippa_westoby@yahoo.co.uk)





### Hardship Fund Update



The Oakington and Westwick Hardship Fund was launched last April to provide support to local residents who are short of money. Within a few weeks, more than £1,000 was raised and a small team was formed to manage the Fund and respond to requests for help. The team keeps all personal details completely confidential. We respond to all requests and can signpost to other agencies.

Please contact us if you need our help. The email address is [oak.west.hardship.fund@outlook.com](mailto:oak.west.hardship.fund@outlook.com).

In the first months, the Fund boosted the Food Bank by topping-up the food that was donated at Oakington Village Stores. The Fund also bought baby items for a family with a new baby and paid for a phone top-up to enable someone to contact agencies to help them.

The Fund has continued to receive requests for help, and has provided 11 grants to people who were without money to buy food, from October 2020 to July 2021. The grants were given as vouchers or cash. We also helped two families to replace broken household equipment including a washing machine for a household with several young children. Everyone who has been helped has been furloughed from their workplace or is living on benefits.

In January, we agreed with OWN that we would buy three low-cost computers for Oakington Primary School. One of our team also acquired three ipads from a local charity, and therefore we were able to help ensure that all children in the village were able to study at home during the months that the school was closed.

Over the year, the Fund has continued to receive donations

and a total of £2,478.33 has been raised, with the last contributions in April 2021. The total amount spent by the Fund is £1,137.83.

The Hardship Team operates within procedures agreed by OWN (Oakington and Westwick Neighbours), the Parish Council and Community Association. The bank account is managed by the OWN Treasurer and proper financial control mechanisms are in place.

Several neighbouring villages including Cottenham and Girton have Hardship Funds that have helped their residents over a number of years, so it is great to be able to support people in Oakington and Westwick in a similar way.

*Jo Mills*

### Oakington & Westwick Neighbours

It's back! The famed Oakington and Westwick Neighbours Jazz and Tea event is planned to return this year on **Sunday 5 September 2021 from 3 to 5pm** by the lake at 9 Longstanton Road. Note that numbers entering will be limited this year, and unfortunately there is no disabled toilet access. The event is always popular and it is no real surprise; the setting is stunning, the cakes superb, the live music mellow and the September sunshine glorious.



Don't forget OWN is still here to help, whether that is for shopping, posting letters, collecting prescriptions, running errands, or a cup of tea and a chat if you can't get out and about.

Contact us on 07902111786 or [owneighbours@gmail.com](mailto:owneighbours@gmail.com).

*Jo Bryant*

### Environment Action Group



Our **Flood Mitigation Group** continues to be concerned about the lack of action regarding the Northstowe developers' long-promised attenuation ponds on Oakington Brook. Andrew Dennis (FMG) and Parish Council Chair Stephen Moore, together with Cllr Alex Malyon, met with South Cambs District Council's Planning Officer dealing with Northstowe in June to request an update. Unfortunately, the delays continue. Apparently, the Environment Agency are currently updating their flood model for the brook as a result of the A14 improvements, and no design work can be undertaken until the results are confirmed. Furthermore, part of the funding for the attenuation work may not be triggered until 2000 houses in Northstowe Phase 2 are occupied which, at the current rate, is not likely to be until 2026/27. We believe that this is totally unacceptable and must be brought forward.

The summer plants in the village **flower tubs** are already looking stunning, thanks to the volunteers who are looking after them. Unfortunately, the infrequency of verge cutting by Cambridgeshire County Council has meant that some of the tubs, such as at the entrance to Queensway and the one in Westwick, are being obscured by long grass. We have raised this issue with our County Councillor Firouz

Thompson. Our understanding is that the next cut will be carried out at the end of July/start of August.

Our **highways monitoring** subteam have been encouraged to see that some maintenance and repair work, including pothole filling and sweeping of road and footway edges, has been carried out by Cambridgeshire County Council, although many such issues remain. We were also disappointed to learn that the footway in Westwick is now considered to be beyond surface treatment and that more extensive repair may be a few years away. We encourage everyone to continue to report matters of concern at [highwaysreporting.cambridgeshire.gov.uk](https://highwaysreporting.cambridgeshire.gov.uk). We also encourage homeowners to make sure that their hedges do not encroach on footpaths, as encroaching vegetation can make footways difficult to use, especially for users such as those with buggies or pushchairs.

Finally, work continues on the **PC/EAG recreation ground development project**. This has included obtaining a flood risk assessment, investigating issues of tree protection and possible archaeology, and submitting the planning application. We are very grateful to everyone who has returned signed flyers or voted for the project online, as this is crucial to winning funding.

*Stephanie Smith, Secretary*

## BEST GARDENS SERVICES EST. 2010

YOUR LOCAL GARDEN MAINTENANCE,  
LANDSCAPING AND TREE CARE  
SERVICE



FOR A FREE QUOTE AND ADVICE  
CONTACT ZAID – 07851022474  
WWW.BESTGARDENS.CO.UK  
BESTGARDENSSERVICES@YAHOO.CO.UK



#BESTGARDENSSERVICES

## WheelieFreshBins

A wheelie bin cleaning  
service for both domestic  
and commercial customers.

**Book a regular or one off clean.**

**Tel: 01223 277747**

Book online at  
**[www.wheeliefreshbins.com](http://www.wheeliefreshbins.com)**

Find us on



*The family  
welcomes you!*



**OLD CROWN**  
GIRTON

*Serving food  
12-9.30 everyday*

THE OLD CROWN IN GIRTON HAS NEW OWNERS  
AND WE ARE DELIGHTED TO WELCOME YOU THIS SUMMER



**RESTAURANT  
PUB & GARDEN**

**SUNDAY ROASTS  
REAL ALES**

89 HIGH ST, GIRTON, CAMBRIDGE, CB3 0QD

[info@theoldcrowngirton.com](mailto:info@theoldcrowngirton.com) 01223 277217

[theoldcrowngirton.com](http://theoldcrowngirton.com)

DON PASQUALE  
ITALIAN FAMILY DINING



[theoldcrowngirton](https://www.instagram.com/theoldcrowngirton)



### Oakington & Westwick Table Tennis Club

We are a small, friendly club, of mixed ability. We play throughout the year and meet every Tuesday at 7.30pm at the Pavilion in Queens Way and we would welcome any new players who wish to join us. We have four table tennis tables and a quantity of spare bats - all you need is a pair of trainers. Please note that an adult must accompany junior players. If you would like any further information please contact Gillian L'angellier on 234758.

*Mick Dorling*



### Oakington & Westwick Tennis Club



#### Have you been inspired by Wimbledon this year?

If so, why not join Oakington & Westwick Tennis Club? There's still plenty of time to get some games in on this year's subscription which runs from 1st April -31st March. Rates are only £65 for a family, £45 for adults and £20 for juniors and you don't need to book in advance to play on our two outdoor hard courts. Coaching is available and social events are organised during the year.

Further information can be found on the noticeboard at the courts by the Recreation Ground in Queens Way. Alternatively, if you have any questions please contact [oakingtontc@gmail.com](mailto:oakingtontc@gmail.com).

*Gill Attmore*

### Oakington & Westwick WI

And so we meet at last!!

How fortunate that our 2021 programme turned out somewhat fortuitous and almost prophetic in the end! June's meeting had always been planned as a visit to Tina's garden, and July was to be a Summer Party which, thanks to James, we were able to hold on the Vicarage Lawns.



And so our WI begins to meet in person again. Our programme for the Autumn will now continue in the Church Hall, the second Thursday of each month at 7.30pm. If you are looking to try something new post lockdown, why not come along for a trial evening? Contact [helenwilliams5@outlook.com](mailto:helenwilliams5@outlook.com) for more details.

*Helen Williams*



### Tuesday Talk & Tea

Oh dear, hoped we could enjoy strawberry tea this July, however, we must be practical and monitor the situation carefully. Looking forward to an early Autumn opening which will give three of the committee members chance to recuperate after hospitalisation this year. Keep safe, enjoy the summer, looking forward to seeing you all again.

*Joan Pettit (chairperson)*

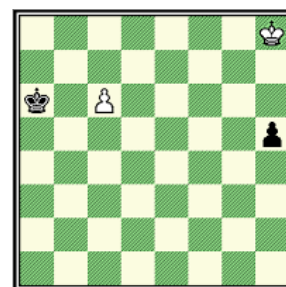


### Chess Club

Solution to a problem from the last issue: White Rook e6-e8+ check! If black Knight takes white Rook on e8 – white Bishop moves to h7, check mate! Alternatively, if black Rook shields the King f7-f8, White Rook takes black Rook and check mate!

At the Village Picnic we will also show the solution to the most famous chess problem shown here. White to move, and although its position looks hopeless – in preventing the black pawn reaching the first row and promoting into a queen, there is a way to draw the game. Come and see us!

*Ranko Pinter*



### Community Association

During the last couple of months, the CA committee and three volunteers have been busy organizing the Village Picnic. As you will all know by now, due to the slow relaxation of Covid restrictions the event was postponed till 31<sup>st</sup> July. We'll report on the Picnic in the next Journal.

#### Bonfire Night Saturday 6 November?

At the Community Association's meeting in June, there was a cautious agreement that we thought the village would like a Bonfire Night to go ahead this year and we decided on a provisional date of Saturday 6 November.

We are pleased that Ben Phillips is willing to head the experienced 'Fireworks Team' and our treasurer, Bernie Yates, will look after the budget. However, we need a Chair and additional people to be responsible for e.g. Bonfire, Volunteers, Admin. **Without more people coming forward, a Bonfire Night celebration will not take place.**

To volunteer, please contact [oakington.westwick.ca@gmail.com](mailto:oakington.westwick.ca@gmail.com).

#### Journal Team

We are very pleased to welcome Jan Zelnick to our team. Jan has kindly volunteered to look after advertising for a while, taking over from Irène Butlin.

Advance notice to Community Association members: The next meeting will be on **12 October**. Zoom or venue tbd.

*Ranko Pinter*





# PS Dean Roofing

**Traditional Roofing Contractors**

Slates, Tiles, Guttering, Chimney's and Re-pointing

Re-roofing, Repairs, Lead-work, Free Quotations

**01223 572504 07752 711175**

[paul@psdeanroofing.co.uk](mailto:paul@psdeanroofing.co.uk) [www.psdeanroofing.co.uk](http://www.psdeanroofing.co.uk)

22 Longstanton Road, Oakington, Cambs, CB24 3BB



**The highest quality  
care starts with  
a connection**

**01223 814 900**

**Wellbrook Way, Girton,  
Cambridge, CB3 0FW**

**hallmarkcarehomes.co.uk**

**Let's Get  
Together** 

 **arlington manor**  
a hallmark care home



### Oakington Vikings

Our Under 16s end of season awards. A great day was had by all...



FA Charter Standard



#### Club Contacts – Our Teams and Coaches

- First Team James 07834 465188
- Under 16s James and Ronnie 07714 099017
- Under 12s Marcus and Josh 07866 635241
- Under 10s Winston 07968 716290
- Welfare officer Frank 07841 995713

For further details please contact  
Oakingtonvikings@yahoo.com or 07834 465188.

James Wilson

### Oakington & Westwick Short Mat Bowls Club



Over the last few weeks the Club has been following revised Covid guidelines, set out by the English Short Mat Bowls Association. This meant that we had to restrict the number of members playing, with additional short-term changes to how we play. While restrictions have now been lifted, the Club has decided that for the next couple of months we will continue to follow these guidelines and restrict play to members only. Once we are confident that play can return to normal, we will be happy for new members to join us. So, if you are thinking of giving bowls a try and would like more information on the Club, please contact Dawn on 01223 236427 and she will let you know when we are able to start our normal sessions again.

Dawn Stokes

### Village Walks



The next evening village walk will be at **7:30pm on Thursday 5 August**. Meeting place: outside the church at the High Street end.

We may need to set a new start time for the shorter days of the year from September to April. Come along in August and be part of the decision process.

The walks are 1–1½ hours long. Please wear comfortable shoes (efforts are made to avoid anything too muddy, but no absolute guarantees can be made). Any questions – please email [alice3000@mail.ru](mailto:alice3000@mail.ru).

Alice J

### Oakington Singers



Slowly but surely, as restrictions have eased, the Oakington Singers have been moving away from our weekly Jamulus/Zoom rehearsals to now actually meeting in person. It's been such a long time! What a joy it was to meet once again in the church this week. Even when stood next to doors flung wide open and wearing masks as necessary, the sound of live singing, with voices blending in harmony, was liberating. And neither did mask wearing disguise any wrong notes or other mistakes, so lines were repeated until rhythms and harmonies were true to the scores.

We will be singing at the Soirée on the Vicarage Lawns on Friday 30th July and at the Village Picnic on the next day.

If you are interested in trying out a new leisure activity after so much Lockdown, what better way to brush away the cobwebs than a good sing. To join our choir, or try us out, contact [helenwilliams5@outlook.com](mailto:helenwilliams5@outlook.com). You are guaranteed a warm welcome!

Helen Williams

### Cambridge Ten Sing



So, we made it! Year 25 of Ten Sing, the strangest year and one of the most challenging ever, and I have to say some huge 'Thank You's':

To Bonny and Nick Rogers, who helped us with planning and admin, evening meetings, and making doorstep deliveries to our young people so they had things to do over Zoom meetings. To Kim Gregory (and Fryda the dog, official Ten Sing Mascot!), who helped with the complicated risk assessments and evening meetings. To our Young People's Committee for their creativity, ingenuity, perseverance and friendship. And to all our young people for keeping us going through a pandemic, you were there and we survived!

We are looking forward to September, new members, new challenges and new ideas, so come join us! Email [cambridgetensing@gmail.com](mailto:cambridgetensing@gmail.com), see what we have planned!

Terry King, Ten Sing Administrator

Country Dancing and Monday Café hope to restart soon.

## MOBILITY EQUIPMENT

SCOOTERS, WHEELCHAIRS, RISER/RECLINER  
CHAIRS, BEDS, WALKERS, FOOTWEAR,  
TOILET & BATHING AIDS, KITCHEN &  
HOUSEHOLD AIDS, CONTINENCE CARE,  
CUSHIONS, STAIRLIFTS AND MUCH MORE

HOME VISITS AVAILABLE  
EQUIPMENT HIRE, SERVICING AND REPAIR  
FRIENDLY AND CONSIDERATE SERVICE  
GUARANTEED

Scotsdales Garden Centre  
Horningsea, Cambridge  
CB25 9JG

Tel: 01223 863908  
[www.orchard-mobility.com](http://www.orchard-mobility.com)  
Open: Monday to Saturday  
9 am - 5 pm



DELICIOUS HOMEMADE CAKES FOR THE EVERYDAY!




## Oakington Dog Day Care Centre



Rated by South Cambs DC

**07704 729299**

[www.oakingtondogdaycare.co.uk](http://www.oakingtondogdaycare.co.uk)

Visit our   pages for photos of happy dogs having a lot of fun

**Dry Drayton Road, Oakington, CB24 3BD**

## Julie Griffin Beauty Therapy

Beauty care personalised for each client

Refresh and relax with your  
local Beauty Therapist in  
Oakington

*Strict Covid protocols adhered  
to at all times*



This is the time to prepare  
for the better weather and  
holidays, waxing is the ideal  
treatment for smooth skin  
over your holiday and this is  
the perfect time to start.

The past few months of  
mask wearing and winter  
weather have also not been  
kind to our skin so why not  
treat yourself and your skin  
to a luxury relaxing facial.

Free consultations and  
advice given.

[www.juliegriffinbeauty.co.uk](http://www.juliegriffinbeauty.co.uk)

E: [juliegriffinbeauty@gmail.com](mailto:juliegriffinbeauty@gmail.com) T: 01223 473341  
79 Longstanton Road, Oakington Cambridge CB24 3AB



### “The Bake Place”

Oakington has got a new cake baking business!



Locally born and bred Jess (Warboys) Skelton has recently set up “*The Bake Place*”, offering cakes and bakes to suit any occasion – all homemade with free range eggs and natural ingredients.

From childhood Jess had dreamt of wanting to be a chef and she trained at Cambridge Regional College to pursue her passion.

For the last 12 years she has been a pastry chef at three university colleges,

learning everything cake related from the finest French Fancies to the humble British Bake. Then the pandemic provided her with the opportunity to start up on her own and she is thankful for the encouragement of family and friends.

Jess says, “There is never a bad time for cake, ‘*The Bake Place*’ offers cakes not just for parties but also for a mid morning treat just for yourself or when having friends over for a cuppa.”

She recommends her Triple Chocolate Brownies (£12 for 8), a favourite of her family. If chocolate is not your thing then try her Victoria Sandwich (8”) at £22.50, “light, fluffy and just delicious”. For those without a sweet tooth she makes “pretty decent cheese straws” (£5.50 for 20).

The proof of the pudding is in the eating so why not order something today! (Collection or free local delivery.)

**Website:** [thebakeplace.co.uk](http://thebakeplace.co.uk)

**Special Offer:** 10% off all orders from residents until 30 September. Code VILLAGE10

Advertisement

### English Language Research – volunteers wanted

I am currently collecting data as part of my English Language A-Level at Hills Road Sixth Form College. I am completing an investigation for our coursework unit. I am looking for:

- Adults who speak English as an additional language, at whatever level
- Children under the age of approx. 8 years who speak English as their native language (with parental consent)

It will consist of a short (max. 15 minutes) voice recorded conversation, preferably in person but online is also possible.

Many thanks.

For more details please contact:

Shula Sutherland  
[shulasutherland@gmail.com](mailto:shulasutherland@gmail.com)



### Neighbourhood Watch



Summer has come at last, and we are joyfully opening our windows and doors for ventilation: remember to close these before you leave the house, as burglars are also enjoying the easy access.

Reminder again that the NHS will never ask you to pay for any Covid-19 vaccinations, or testing.

Scams are still circulating, by electronic devices, post, and even personal call. Check with the alleged company before handing over any personal or banking details.

Jillian Wilkinson  
01223 233585 - [oakwestnhw@gmail.com](mailto:oakwestnhw@gmail.com)

### New Picnic Table in the Community Orchard

We are delighted to announce the arrival of a new picnic table which seats six, is wheelchair accessible and is located in the community orchard, just behind the pavilion on the recreation ground.

During the Covid pandemic there was a shortage of protective clothing and scrubs in both hospitals and GP settings. Paola Moore began making scrubs for Scrubs for Cambridgeshire and encouraged a group of friends to join her in this important sewing project (Pauline Marsh, Linda Ward, Linda Neech and Jane Goodyer).

As the pandemic gathered pace it became clear masks were also needed and in short supply so the group began making masks too. These were sold through our village shop (thanks to Raj and Kanwal) and raised money for charity.

The funds have been donated to Oakington and Westwick Neighbours, to Cherry Trees Day Centre, to Scrubs for Cambridgeshire, to Oakington Over 60s and to the Parish Council to purchase the picnic table for the village.



Do come and enjoy a rest, or picnic in the orchard.

Jane Goodyear

### Coffee Morning in Aid of Macmillan

**Friday 17 September**  
10am – 1pm  
at 47 Longstanton Road

Donations of cake welcome and all cash donations for Macmillan

Beck Hudson Silk & Liz Davis



## COUNSELLING

Experienced, qualified,  
NHS & private counsellor

*Immediate appointments available*

Telephone Mark on **07905 833 288**

[info@thecambridgecounsellor.co.uk](mailto:info@thecambridgecounsellor.co.uk)

[www.thecambridgecounsellor.co.uk](http://www.thecambridgecounsellor.co.uk)

## Crossways Hair Studio

For your local hair care  
professional, friendly  
and always a warm welcome

Give Vanessa a call - 07746 473853

Crossways House  
1 Longstanton Road, Oakington CB24 3BB

## Local Fitness Classes

### SHAPE N TONE

Mondays 6.30pm, Bar Hill Chur

Wednesdays 6.30pm Bar Hill Chur

### ZUMBA

Thursdays, 10.10am, Bar Hill Chur

### OVER 55s CLASS

Tuesdays, 10am. Bar Hill Chur

Fridays 10am, Oak Sp Pav

£5 A CLASS

OR £40 FOR 10



ONLINE AVAILABLE CLASSES DURING LOCKDOWNS

Call Simon on 01223 236945 or visit  
[www.bodyinmotionpt.co.uk](http://www.bodyinmotionpt.co.uk) for info

## revolution health & fitness

### Join the new revolution in Cambridge

Fully refurbished gym

New life fitness cardio and weight machines

Jordan free weights

Unlimited studio classes

New functional fitness area

Over 30 classes per week



New boxing rig and prowler track

Free fitness analysis and gym programmes

Free trial day

No contract or joining fees

Membership starts from £29 per month

Cambro Business Park,

Oakington Road,

Girton,

Cambridge. CB3 0QH

Tel: 01223 519548

Website: [revolutionhealthfitnessgirton.co.uk](http://revolutionhealthfitnessgirton.co.uk)



## Book Corner

**Agent Sonya** by Ben Macintyre

If like me you enjoy factual historical accounts, you will enjoy Ben Macintyre's books. His latest, *Agent Sonya*, tells the fascinating true story of the Soviet Union's most successful female agent.



In 1945, the villagers of Great Rollright in the Cotswolds had no idea that the friendly but reserved lady they knew as Mrs Burton, living in the stone farmhouse called The Firs with her three children and husband Len, and who baked excellent cakes and spoke English with a faint foreign accent, was really Colonel Ursula Kuczynski of the Red Army. A dedicated communist, a decorated Soviet military intelligence officer and a highly trained spy who had conducted espionage operations in China, Poland and Switzerland before coming to Britain on Moscow's orders. They did not know that her three children each had a different father, nor that Len Burton was also a secret agent. They were unaware that she was a German Jew, born in Berlin in 1907, a fanatical opponent of Nazism who had spied against the fascists during the Second World War and was now spying on Britain and America in the new Cold War.

Ursula Kuczynski Burton was a mother, housewife, novelist, expert radio technician, spymaster, courier, saboteur, bomb-maker, Cold Warrior and secret agent, all at the same time. Her codename was 'Sonya'.



Bruce Sutherland

## Board Games Chest

Two recommendations from a younger reviewer!

### Jungle speed

You have to match the shapes on the card and grab the pole in the middle. Some special cards mean different things. You have to look closely in this game. You have to be fast to grab the pole. And concentrate hard.



This game is good for children, adults and people. A few people can play or a lot of people. Babies, toddlers and old people can't play this because they're too slow.

Don't moan if you lose.

### Snail race

There's six coloured snails. Choose a colour or two. Put the snail on the right colour. There are two dice. Roll the dice and move the snails, even if it's not yours. Whoever gets there first wins, whoever gets there last, loses! It doesn't matter if you lose. You shouldn't cheat and you shouldn't push other people's snails off the board.



Sofia, age 5

## My Hobby

Painting is, by far, my favourite pastime because it is usually relaxing, creative and sometimes even successful - in my humble opinion! My enjoyment of drawing and painting in my younger years, coupled with a growing interest in buildings, led me to study and qualify as an architect. I did not have the opportunity to master computer-aided drawing and so my experience in using pen and pencil developed over time.



Designing and drawing buildings gave me some grasp of three-dimensional space, perspective, colour, light and shade etc. However, this did little to encourage me into painting in abstract forms or in a 'free' style but I still have a desire to make progress in that regard. I also lack experience and the ability to successfully paint outdoors but I am trying! Mostly, I will base my work on a snapshot of my own or perhaps a photograph from a newspaper, book or magazine but, whatever the source, I enjoy observing what is in front of me and trying to succeed with something which will be enjoyed and definitely add more to, or at least be quite



different from, what a simple photo can ever achieve.

I would also admit to what seems a very common issue, in that I do need inspiration and encouragement! Consequently, I benefit greatly from being a member of an art group with weekly meetings, usually led by one of a variety of friendly, experienced tutors. It is also good to be confronted with a challenge of working in different media and with a subject that may take us out our comfort zone - there is always room for improvement! I highly recommend joining such a group to anyone who has a mind to follow in a hobby like mine!

Roger Goodden

## Airfield Road Closure

The consultation closed on 7 July but for information, the proposal is to make permanent the current traffic restriction order for the 'Airfield Road' between Oakington and Longstanton. This will prohibit all motorised vehicles on Oakington Road, Longstanton from a point 460 metres southeast of its junction with Wilson's Road to Longstanton Road, Oakington and Westwick at a point 370 metres northwest of its junction with Lowbury Crescent. Access for pedestrians, cyclists and equestrians will be maintained with provision for access for adjacent agricultural landowners and emergency service vehicles. They are proposing installing box steel gates (to replace the current concrete barriers) which would have a 1.5m gap which would allow access for horses and other users.

Sarah Cheung Johnson & Alex Malyon



**Alpha Car Taxi Service**

We are a local private hire taxi service based in Longstanton. We can transport you to the airport, to an event in London or locally to Cambridge.

We cater for all your transport needs however long or short they may be.

01954 23 23 00

info@alphacarsonline.co.uk

*Think Taxi Think Alpha Cars*



**Wendy's of Girton**

**Private Hire Taxi Service**



Short or Long Distance Travel

Taxi-card Vouchers Accepted

Local  
Reliable Comfortable  
Affordable

Phone: 528675  
or 07815 057 202  
Email: wb9wg@yahoo.co.uk

**Van Rental**

[www.stuardarlingvans.co.uk](http://www.stuardarlingvans.co.uk)

- Self drive daily van rental
- Discounts for long term rental
- Easy to reach out of town location

Stuart Darling Limited, 3 Greenside, Waterbeach, Cambridge.

**Cambridge 01223 441551**



**Four Wheels**

German Car Specialists

Mercedes-trained Staff • Servicing • Air-con • MOTs  
Diagnostics • Free Collection • Courtesy Cars

Call Andy Robinson on  
**01223 880336 • 07720 079697**  
Unit 8-9 Station Yard, Fulbourn CB21 3ET




**Prime Plumbing & Electrical**

Gas Plumbing Electrical & Maintenance Boiler Services Kitchens

22a Cambridge Road, Impington, Cambridge, CB24 9NU

Tel/Fax: 01223 237795 - Mobile: 07802 807237

[primeplumbing@yahoo.co.uk](mailto:primeplumbing@yahoo.co.uk)

**CROSSWAYS GARAGE**

**OAKINGTON**

**Tel: (01223) 233003**

Service, Repairs & Tyre Fitting  
to all Makes of Vehicles  
& Light Commercial

**Approved MOT Testing Station**

*Member of the Retail Motor Industry Federation*



**C. S. Barker Builders**

**Oakington**

**Alterations / Extensions / New Build**

**07714 099017 01223 237068**

**D.K.TILL & Son in Law**

COAL AND SOLID FUEL MERCHANTS

Family run business for 40 years  
Coal, Logs, Charcoal, Gas, Compost

TEL, 01223 232947 David Till, 07523044521 Kevin Crisp  
email, [dktil@hotmail.co.uk](mailto:dktil@hotmail.co.uk)





# **Girton Golf Club**

**The Networked Members Golf Club**

**Join as a 5 day or a 7 day Member**

**and Play Over 60 other UK Courses for Free**

**Low membership rates for Juniors and the under 30s**

**Ask for details of Sam Beckett's new Junior and Adult Academies**

**Our Club House is Open Daily 9 am to 4 pm**

**Outside tables also available on our patio**

**Breakfast/lunchtime menu with daily specials**

**Supper evenings now booking**

**Call in for tea, coffee or something stronger**

**Please follow covid rules (while we have them)**

**Girton Golf Club**

**Dodford Lane, Girton, Cambridge CB3 0QE**

**Tel: 01223 276169 [www.girtongolf.co.uk](http://www.girtongolf.co.uk) [info@girtongolf.co.uk](mailto:info@girtongolf.co.uk)**

**Follow us on Facebook, Twitter and Instagram**

### Slugs and Snails

My runner beans plants: 5.

Those destroyed by slugs and snails: 15.

No, this is not a Euro 2020 score and it looks as if my beans are not coming home. So I did a little reading about these less than lovable animals and found out that our gardens, on average, have about 200 slugs and snails in each cubic metre. Perhaps the surprise is that they only destroyed 15 of my precious plants. They certainly do more damage in moist conditions.

The difference between slugs and snails is, of course, the shell, which protects snails from drying out. Snails need chalk or limestone in the soil to make their shells so do not occur in other soils. Even though their shells offer protection, they are not that keen on sunlight and tend to be nocturnal. Snails also hibernate in winter and are not very good at finding their way back to your garden if you move them more than twenty metres away. This is not an invitation to throw them into next doors' garden.

Slugs can find their way around because they follow their scented slime trails and can move at a serious speed of 1 metre per hour. Slugs tend to spend most of their time underground eating seeds and roots and are a vital part of our garden eco-systems by consuming plenty of decomposing vegetation. They are also nocturnal, and in dry weather, they burrow deep to find moister soil.



Both slugs and snails are hermaphrodite, having organs of both sexes. Slugs can reproduce on their own, so numbers can increase dramatically, especially in moist conditions.

*Which evolved first, slugs or snails?*

Fossil finds do not make this clear. It is pretty definite that snakes evolved from lizards who lost their legs and that whales evolved from four legged land dwellers because they have the remnants of pelvic girdles, but it seems that shells have come and gone over years and some slugs have shells buried beneath their skin so they look like, well yes, slugs.

*What can we do to protect our plants?*

Chemical slug killers can be harmful to other wildlife, and many are no longer available for this reason. Most act by causing the molluscs to dehydrate so often they don't work well in wet conditions.

Alternative treatments include traps, biological control (nematodes) and hand-picking by torchlight! Plastic drinks bottles with the end cut off can act as mini-cloches. Materials like gravel, broken egg shells, and wood ash are said to hinder the movement of molluscs. Beer traps lure slugs to a boozy end. Spreading lettuce or cabbage leaves around the crop offers an alternative food supply, although the leaves need to be checked frequently. Adapting growing techniques may be helpful, such as raising transplants rather than direct sowing. Lavender, rosemary and cranesbills offer some protection.

There are natural predators. Hedgehogs, some rodents and birds eat slugs and snails. Ground beetles eat their eggs, and glow worm larvae exclusively feed on slugs and snails.

John Terry

### It's back! LAKESIDE JAZZ & TEA



Tea and cakes, live music and garden games  
beside a beautiful lake in Oakington

**Sunday 5 September 2021, 3.00 – 5.00pm**

In aid of OWN (Oakington and Westwick Neighbours)

Music from Black Coffee Jazz

£5 for adults; £1 for children up to 12

Limited numbers to ensure social distancing

Venue: The lake at 9 Longstanton Road, Oakington

1871



2021

**150<sup>th</sup>**

### Anniversary Celebration



**Friday 24th September  
3:15pm to 5:00pm**

**Join us** for our **150<sup>th</sup> birthday celebrations**  
including:

Spitfire flypast (TBC) 🌟 Bouncy Castle 🌟 Cream Teas  
Tree Planting Ceremony with invited celebrity  
Gallery of photos, plans and artefacts  
Choir performance 🌟 Cake Stall 🌟 BBQ and Pizza oven

#### Fundraising

Money raised at this event will go into a new **Enrichment Experiences Fund** which will provide experiences above and beyond the normal curriculum