

Oakington & Westwick Parish Council

Meeting Papers

Full Council Meeting, 14 September
2020

County Councillor report August 2020

The drainage works on Cambridge Road from the traffic calming to Crossroads is ordered and due to be carried out by the 23rd September... Provisional date is the 14th September. The jetting of the rest of Cambridge Road offlets and gullies has also been ordered.

Previous reports and jetting works in the area did not show any blockages to the drainage runs adjacent to the crossroads.

Re a question from David, Cambridge Road Girton was put forward for resurfacing 2 years ago due to structural issues and the volume of traffic the road was carrying at the time. This road is still heavily used and has continued to wear. Water Lane has been put forward for survey for suitability for a surface treatment, also Longstanton Road. If this is not the case then this will be added to the list for resurfacing. A number of potholes on the area before the traffic calming o/s no9 were repaired earlier and on a recent inspection no cat1 defects were observed.

The Westwick footpath clearing order is in, and work should be started soon.

Virus update

1. Key points

Confirmed Covid-19 cases – overall and in care homes

- **63 new lab-confirmed Covid-19 cases** were detected in Cambridgeshire and Peterborough in the latest reporting period, 17-23 August (as at 26 August). This is 9 less than the previous reporting week.
- The cumulative rate of Covid-19 cases per 100,000 population in **Peterborough (782.7) remain statistically significantly higher** than the national rate (504.8); the rates are statistically similar in Fenland (501.7) and Huntingdonshire (532.1) (data at 26 August).
- The **7 day rolling average of confirmed cases** for Cambridgeshire, Peterborough, and each of the Cambridgeshire districts, shows a declining trend in Covid-19 cases since the peaks in late April, and a lower, **more stable trend in recent weeks**. However, confirmed cases have increased in South Cambridgeshire (+1) and Peterborough (+5) in the most recent reporting week.

All cause and Covid-19 deaths – all settings and in care homes

- **4 Covid-19 related deaths** occurred in Cambridgeshire and Peterborough in ONS reporting week 33, up from 2 in week 32 (2 Huntingdonshire, 2 Peterborough).
- **All-cause deaths** numbers increased by 19, to a total of 124 deaths, for **Cambridgeshire and Peterborough** in week 33 (plus 19 deaths in Cambridgeshire).
- At a district level, **Cambridge (+8), East Cambridgeshire (+3), Huntingdonshire (+9)** and South Cambridgeshire (+10) had an **increase in all-cause deaths** between the last two reporting weeks.
- **Cambridgeshire has had 2 notifications of a Covid-19 related death in a care home since 10th August**. The last notification for Peterborough was 8th July (data at 25 August).
- The number of **all-cause deaths is above the 2014-18 average in Cambridgeshire and the districts except Fenland**. Numbers in **Peterborough are below the 5 year average** and are similar in Fenland.
- The number of **all-cause deaths in care homes are above the 2014-18 average in Cambridgeshire**. It is below the 5 year average in Peterborough and Fenland, and similar in South Cambridgeshire.

2. Covid-19 positive cases: overview tables

This report includes laboratory confirmed Covid-19 infections ('cases') aggregated from pillar 1 and pillar 2 testing.¹ These are updated daily at <https://coronavirus.data.gov.uk/> and this is the source for the data included here.



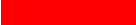
Note: It is important to note that availability of testing, and variations in the number of settings that may require collective testing, for example care homes, schools, or workplaces, may be in part responsible for some variation in the number of confirmed cases across areas of Cambridgeshire and Peterborough. Cambridgeshire County Council and Peterborough City Council, along with local partners, have a daily surveillance meeting that monitors the Covid-19 infection data and takes appropriate action related to cases in the community or in specific settings such as care homes, schools and workplaces.

The cumulative numbers and rates of lab-confirmed cases of Covid-19 reported at 26 August 2020

Area	Total cases	Rate per 100,000	95% CI	
			Lower CI	Upper CI
Cambridge	374	299.7	270.8	331.6
East Cambridgeshire	208	231.5	202.2	265.1
Fenland	511	501.7	460.2	547.0
Huntingdonshire	947	532.1	499.4	567.0
South Cambridgeshire	388	243.9	220.8	269.4
Cambridgeshire	2,428	371.5	357.1	386.6
Peterborough	1,583	782.7	745.2	822.0
East of England	26,198	420.1	415.1	425.2
England	284,155	504.8	503.0	506.7

Notes: Rate per 100,000 resident population, crude rates calculated using mid-year 2019 population estimates

Last updated on Wednesday 26 August 2020 at 4:04pm. Figures are from pillar 1 and pillar 2 testing.

	Statistically significantly better than England
	Statistically similar to England
	Statistically significantly worse than England

Source: Public Health England (PHE), <https://coronavirus.data.gov.uk/>

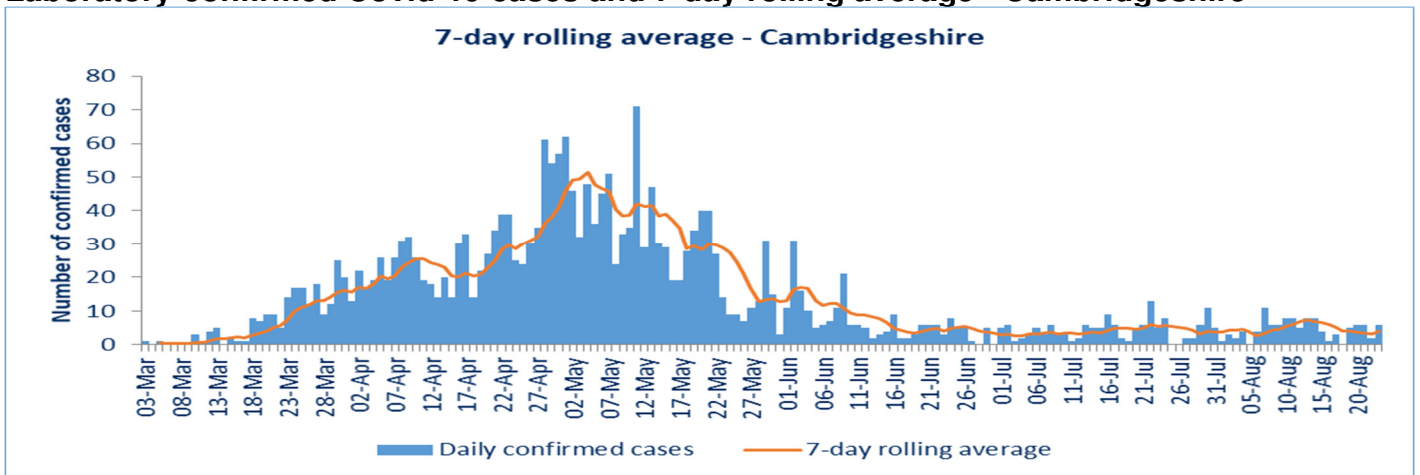
Key points:

- The cumulative rates of confirmed cases of Covid-19 per 100,000 population are statistically significantly lower in Cambridgeshire (371.5) when compared to the England average (504.8).
- Of the Cambridgeshire districts, the cumulative rate of confirmed cases of Covid-19 per 100,000 population in Fenland (501.7) and Huntingdonshire (532.1) is statistically similar to the national average. The rates in Huntingdonshire and Fenland are largely related to cases in particular settings, such as care homes, hospitals, schools and workplaces, and these have been actively managed locally, working with partners and Public Health England.

¹ Pillar 1 is testing in laboratories - so mainly for hospital patients, healthcare workers and care home residents. Pillar 2 testing is processed in national laboratories and is mainly tests booked by individuals in the community - such as the tests available at the drive through site in Peterborough Showground, the postal tests made available through the national Test and Trace website, and whole care home testing of staff and residents.

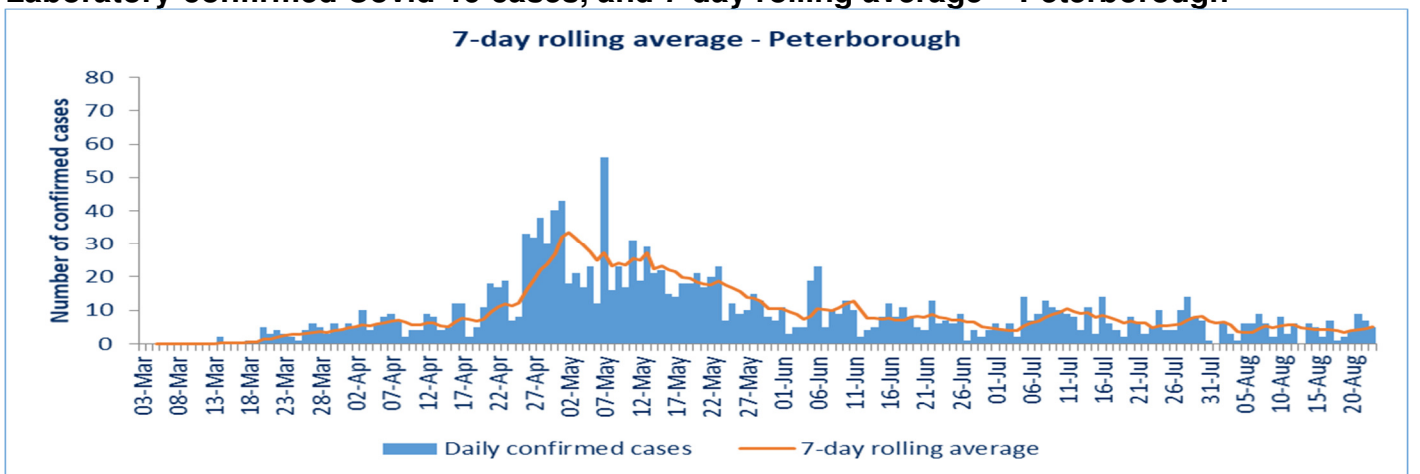
- The cumulative rate of confirmed cases in Peterborough (782.7) is statistically significantly higher than the national rate. The higher rate in Peterborough has been, in part, driven by the testing completed under pillar 2. This is part of an ongoing management arrangement with Public Health England and partners. The situation is also considered in daily surveillance and outbreak management meetings and appropriate action is being taken in settings and impacted communities.

Laboratory-confirmed Covid-19 cases and 7-day rolling average - Cambridgeshire



Notes: Last updated on Wednesday 26 August 2020 at 4:04pm. Figures are from pillar 1 and pillar 2 testing.
 Source: Public Health England (PHE), <https://coronavirus.data.gov.uk/>

Laboratory-confirmed Covid-19 cases, and 7-day rolling average – Peterborough



Notes: Last updated on Wednesday 26 August 2020 at 4:04pm. Figures are from pillar 1 and pillar 2 testing.
 Source: Public Health England (PHE), <https://coronavirus.data.gov.uk/>

Key points:

- The 7 day rolling average of confirmed cases for each areas across Cambridgeshire and Peterborough show a declining trend since the respective peak in Covid-19 cases overall. However, there is an upturn in the recent days for Peterborough.

Weekly confirmed positive Covid-19 cases, Cambridgeshire and Peterborough, at 26 August 2020 (most recent 8 recording periods)

Area	Date, week starting								Total (most recent 8 weeks)	Total*
	29-Jun	06-Jul	13-Jul	20-Jul	27-Jul	03-Aug	10-Aug	17-Aug		
Cambridge	4	5	3	11	6	11	12	6	58	374
East Cambridgeshire	3	0	2	0	1	1	7	5	19	208
Fenland	6	6	7	9	7	5	4	4	48	511
Huntingdonshire	5	3	10	12	11	13	15	8	77	947
South Cambridgeshire	4	9	12	5	5	3	4	5	47	387
Cambridgeshire	22	23	34	37	30	33	42	28	249	2,427
Peterborough	38	67	44	40	46	33	30	35	333	1,579

Notes: Each weekly total refers to reports in the period Monday to the following Sunday (e.g. 03 Aug refers to period 3-9 Aug). Last updated on Wednesday 26 August 2020 at 4:04pm. Figures are from pillar 1 and pillar 2 testing.

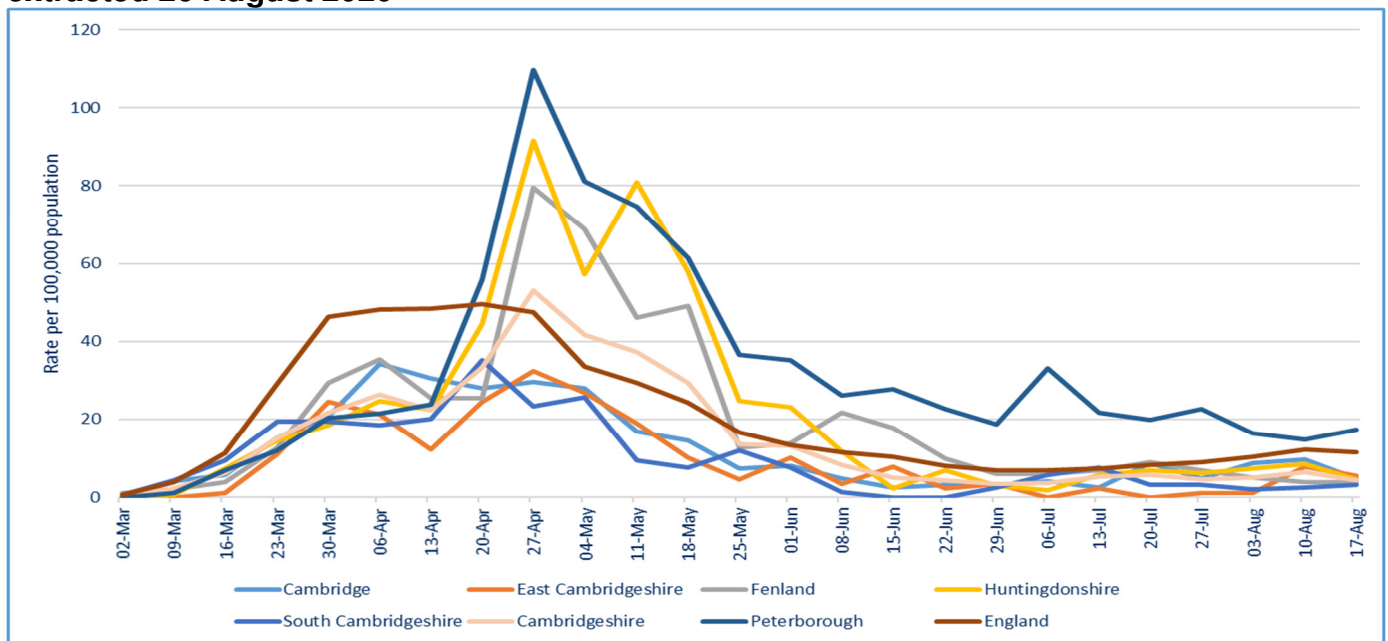
*The total numbers refer to the total of all confirmed positive Covid-19 cases from the week starting 2 Mar 2020 until the week starting 17 August 2020. For reference, the first recording point was the week starting 2 March. This table only shows the most recent 8 recording periods.

Source: Public Health England (PHE), <https://coronavirus.data.gov.uk/>

Key points:

- For Cambridgeshire and Peterborough combined there were 63 confirmed positive Covid-19 cases in the last reporting week (minus 9 compared to the previous week). This was 28 confirmed positive Covid-19 cases in Cambridgeshire and 35 in Peterborough (+5 for Peterborough compared to the previous week).
- There were an increase in number of cases in South Cambridgeshire (+1) in the last recording week.

Weekly rates of Covid-19 cases per 100,000 population, up to week 17 – 23 August, data extracted 26 August 2020



Notes: Rate per 100,000 resident population, crude rates calculated using mid-year 2019 population estimates

Last updated on Wednesday 26 August 2020 at 4:04pm. Figures are from pillar 1 and pillar 2 testing.

Key points:

- Since the peaks in April, data shows an overall declining trend for the weekly rates of confirmed Covid-19 cases per 100,000 population across each area. However, South Cambridgeshire and Peterborough have had a slight increase in the rate of Covid-19 positive cases in the most recent reporting week.

Provisional number of deaths occurring related to Covid-19 in Cambridgeshire and Peterborough residents, and proportions occurring in care homes, in week ending 14 August 2020 (week 33)

Local authority name	Place of death							% in care homes - Cambridgeshire & Peterborough local authorities	% in care homes - England & Wales
	Home	Hospital	Care home	Hospice	Other communal establishment	Elsewhere	All settings		
Cambridge	0	0	0	0	0	0	0	0%	34%
East Cambridgeshire	0	0	0	0	0	0	0	0%	34%
Fenland	0	0	0	0	0	0	0	0%	34%
Huntingdonshire	0	1	1	0	0	0	2	50%	34%
South Cambridgeshire	0	0	0	0	0	0	0	0%	34%
Cambridgeshire	0	1	1	0	0	0	2	50%	34%
Peterborough	0	1	1	0	0	0	2	50%	34%
Cambridgeshire & Peterborough	0	2	2	0	0	0	4	50%	34%

Notes: ONS recording Week 33 relates to deaths occurring week ending 14 August, registered up to 22 August 2020

Source: ONS, File name = lahbttablesweek33.xlsx, released 25 August 2020

Key points:

- ONS recording Week 33 (ending Friday 14 August 2020) there were 4 Covid-19 related deaths across Cambridgeshire and Peterborough. Of those 2 were in Huntingdonshire and 2 in Peterborough. Both Huntingdonshire and Peterborough had 1 death in a care home and 1 hospital death each.
- In Week 33, the percentage of Covid-19 related deaths which occurred in a care home setting was 34% nationally.

Cumulative number of Covid-19 deaths occurring up to 14 August 2020, by place of death

Local authority name	Place of death						
	Home	Hospital	Care home	Hospice	Other communal establishment	Elsewhere	All settings
Cambridge	3	35	43	1	0	0	82
East Cambridgeshire	3	31	16	1	0	0	51
Fenland	3	61	16	1	0	0	81
Huntingdonshire	9	89	35	0	0	1	134
South Cambridgeshire	2	38	21	0	0	0	61
Cambridgeshire	20	254	131	3	0	1	409
Peterborough	5	72	28	1	0	1	107
Cambridgeshire & Peterborough	25	326	159	4	0	2	516

Notes: ONS recording Week 33 relates to deaths occurring week ending 14 August, registered up to 22 August 2020

Schools open their doors after an academic year like no other!

Children and young people across the county have sharpened their pencils, polished their shoes and dug out their schoolbags, as many return to school. While schools in Cambridgeshire and Peterborough led the way in remaining open throughout lockdown for vulnerable children and those of keyworkers, the majority of our school-aged children have not set foot in a classroom since schools went into lockdown on 20th March. In many cases parents have stepped into the role of educators, helping their children with online learning, and fitting this in around their own lives. The upshot of most of our schools remaining open has been the knowledge and experience they

have gained in adapting and adding new measures to ensure a safe environment. Our schools have been working in social bubbles for months, and are well versed in knowing how to keep people safe. Every school in Cambridgeshire and Peterborough was asked to work through a rigorous risk assessment, bespoke to their school. They have thought of everything and thought again.

There is a [helpful guide](#) to support parents and young people as they transition back into formal education. In it is clear information on some of the common things parents ask about every year, such as transport, attendance, free school meals, etc. There is also a point of clarifying the Test & Trace process.

Cambridgeshire leads the way for future proof digital connectivity

Cambridgeshire County Council has been recognised by the Government as a leading authority for its 'barrier busting' work to attract investment in the fastest, most reliable fibre broadband networks to support businesses and communities across Cambridgeshire and Peterborough. The work of the Connecting Cambridgeshire digital connectivity programme to 'effectively encourage the deployment of next generation gigabit broadband networks in rural and urban areas' is cited in a letter to all local authorities from the Minister for Regional Growth and Local Government Simon Clarke and Digital Minister Matt Warman. The letter highlights the importance of digital connectivity for economic growth and social inclusion, which is vital during the Covid-19 pandemic and for recovery, and encourages other local authorities to follow the excellent examples of work by Cambridgeshire and Kent county council members and officers. The Connecting Cambridgeshire digital connectivity programme, led by Cambridgeshire County Council, is significantly improving broadband, mobile and public access WiFi coverage, whilst securing future proof full fibre and 5G networks to take advantage of emerging technology.

Superfast broadband coverage across Cambridgeshire and Peterborough is now over 98% and the programme is aiming to achieve over 30% full fibre coverage by 2022, through a mix of direct intervention and stimulating the market to provide commercial coverage. Connecting Cambridgeshire was among the first in the country to set up a dedicated Enabling Digital Delivery (EDD) service to remove barriers to the delivery of future-proof digital connectivity, with additional funding from the Cambridgeshire & Peterborough Combined Authority. The team facilitates private sector investment for full fibre networks and next generation mobile phone coverage across the area. The EDD service is working with network providers, telecoms operators, housing developers, and council teams to resolve a wide range of fixed and mobile infrastructure issues including wayleaves, street works permits, and infrastructure problems and planning. The service is being used as an exemplar for other local authorities, and has developed a Streetworks Guide to share learning and best practice about working collaboratively with contractors to maximise efficient use of resources and minimise conflicts, delay and costs.

Cambridgeshire registration service bounce back from lockdown



The county council's registration service team have been working hard to recover as quickly as possible following lockdown to help the thousands of customers directly affected.

When lockdown began on 23 March, Cambridgeshire County Council's registration team had to make some huge changes - death registrations were carried out over the phone for the first time in history and birth registrations and ceremonies (including marriages, civil partnerships and citizenship) had to be put on hold. This resulted in a backlog of appointments, and now birth registrations and ceremonies have resumed, the team have been working hard to catch up as quickly as possible. The process of carrying out death registrations via telephone appointments has worked exceptionally well for all those involved – especially bereaved families, who now do not have to travel to come into an

office in Cambridgeshire to register a death. This is something the service is campaigning to keep for the longer term.

Regarding marriages and civil partnerships, the team have dealt with at least 30,000 customer queries as government guidance has been updated and changed. The 73 Approved Venues across the county have also been kept informed throughout. The team has been travelling the world via Skype for some ceremonies, with one live streaming going to a bride's parents in China.

County Hub reflects on its success!

Since March the County Covid-19 Coordination Hub has been staffed by volunteers and council workers who have been seconded from their normal day to day roles in order to help look after the vulnerable in our county.

At the start of the pandemic we identified 19,040 people who required our help. All were contacted by letter and phone and from this the hub has been in regular contact, mainly weekly, with 7,812 shielded people.

People asked for help in many ways; we had 7,763 direct phone calls for help and responded to 5,737 direct emails asking for help. Help came in all kinds of forms. For example, the hub delivered 3,312 food packages and we referred 806 people for befriending support via the Red Cross.

Initially the hub was geared up for practical hands on support such as food packages and delivery of medication, but it quickly became apparent that mental health and loneliness and isolation were additional concerns and the service quickly responded to this. The support officers were invaluable in reaching out on a regular basis to the shielded community. Throughout July support officers worked with the community to help them with transitioning out of shielding. So far 6,185 people who have been receiving regular calls have been supported to learn new skills and processes ensuring that they are able to access food and medication for themselves.

Whilst the hub has paused there is still lots of information for people who have been shielding on the website of Cambridgeshire County Council. As well as information about the support that is on offer now the national programme has paused, people can find support available where they live via the Cambridgeshire Online Directory, which provide residents and families with information on organisations, services and events across Cambridgeshire. For more information visit www.cambridgeshire.gov.uk/cambridgeshire-online-directory

Community projects awarded £5m

Community projects across Cambridgeshire have been awarded a total of £5m as a special fund set up by the County Council comes to a close. A total of 6 initiatives will receive funding in the latest round of applications - the allocations were agreed by the County Council's Communities and Partnership Committee, which met on Thursday (3/09/2020). The Community Capital Fund, which aims to create opportunities and improve lives and skills across the county, was launched by Cambridgeshire County Council at the start of April 2020 with the first recipients announced in May. The fund may contribute up to £500,000 capital funding for projects which can address issues which are a specific priority for the local community, address inequality of access to services or activities, and implement community involvement in delivery or design of the project. Since its launch 63 applications have been received, requesting a total of £9,753,587 with 35 projects have been granted funding totalling £5m from a £5m budget.

Some of the projects granted funding by the committee are:

- £198,000 to extend the Community Hall in Gorefield
- Up to £10,000 for new audio/visual equipment at Hilton Village Hall
- £20,000 for new playground equipment for Eversden Parish Council
- Up to £150,000 for Market Place enhancements in Wisbech
- £88,855 for Hauxton Village Hall
- £50,000 for the Brampton's Men's Shed
- £12,000 to refurbish the Youth Centre for Stapleford and Shelford Youth Initiative
- £15,000 for outdoor equipment for Christchurch Community Centre
- £81,000 for a stable block conversion at St Mary's Church, Bartlow
- £65,000 for the Melbourn Village Hub
- £275,000 for the extension of the pavilion in Girton
- Up to £75,000 for improvements to West End Park, March
- £25,597 for the Overcote Rd project in Over.

Peter Hudson
County Councillor
Oakington, Westwick, Longstanton, Northstowe, and Over.

County Councillor report August 2020

The drainage works on Cambridge Road from the traffic calming to Crossroads is ordered and due to be carried out by the 23rd September... Provisional date is the 14th September. The jetting of the rest of Cambridge Road offlets and gullies has also been ordered.

Previous reports and jetting works in the area did not show any blockages to the drainage runs adjacent to the crossroads.

Re a question from David, Cambridge Road Girton was put forward for resurfacing 2 years ago due to structural issues and the volume of traffic the road was carrying at the time. This road is still heavily used and has continued to wear. Water Lane has been put forward for survey for suitability for a surface treatment, also Longstanton Road. If this is not the case then this will be added to the list for resurfacing. A number of potholes on the area before the traffic calming o/s no9 were repaired earlier and on a recent inspection no cat1 defects were observed.

The Westwick footpath clearing order is in, and work should be started soon.

Virus update

1. Key points

Confirmed Covid-19 cases – overall and in care homes

- **63 new lab-confirmed Covid-19 cases** were detected in Cambridgeshire and Peterborough in the latest reporting period, 17-23 August (as at 26 August). This is 9 less than the previous reporting week.
- The cumulative rate of Covid-19 cases per 100,000 population in **Peterborough (782.7) remain statistically significantly higher** than the national rate (504.8); the rates are statistically similar in Fenland (501.7) and Huntingdonshire (532.1) (data at 26 August).
- The **7 day rolling average of confirmed cases** for Cambridgeshire, Peterborough, and each of the Cambridgeshire districts, shows a declining trend in Covid-19 cases since the peaks in late April, and a lower, **more stable trend in recent weeks**. However, confirmed cases have increased in South Cambridgeshire (+1) and Peterborough (+5) in the most recent reporting week.

All cause and Covid-19 deaths – all settings and in care homes

- **4 Covid-19 related deaths** occurred in Cambridgeshire and Peterborough in ONS reporting week 33, up from 2 in week 32 (2 Huntingdonshire, 2 Peterborough).
- **All-cause deaths** numbers increased by 19, to a total of 124 deaths, for **Cambridgeshire and Peterborough** in week 33 (plus 19 deaths in Cambridgeshire).
- At a district level, **Cambridge (+8), East Cambridgeshire (+3), Huntingdonshire (+9)** and South Cambridgeshire (+10) had an **increase in all-cause deaths** between the last two reporting weeks.
- **Cambridgeshire has had 2 notifications of a Covid-19 related death in a care home since 10th August**. The last notification for Peterborough was 8th July (data at 25 August).
- The number of **all-cause deaths is above the 2014-18 average in Cambridgeshire and the districts except Fenland**. Numbers in **Peterborough are below the 5 year average** and are similar in Fenland.
- The number of **all-cause deaths in care homes are above the 2014-18 average in Cambridgeshire**. It is below the 5 year average in Peterborough and Fenland, and similar in South Cambridgeshire.

2. Covid-19 positive cases: overview tables

This report includes laboratory confirmed Covid-19 infections ('cases') aggregated from pillar 1 and pillar 2 testing.¹ These are updated daily at <https://coronavirus.data.gov.uk/> and this is the source for the data included here.

Note: It is important to note that availability of testing, and variations in the number of settings that may require collective testing, for example care homes, schools, or workplaces, may be in part responsible for some variation in the number of confirmed cases across areas of Cambridgeshire and Peterborough. Cambridgeshire County Council and Peterborough City Council, along with local partners, have a daily surveillance meeting that monitors the Covid-19 infection data and takes appropriate action related to cases in the community or in specific settings such as care homes, schools and workplaces.

The cumulative numbers and rates of lab-confirmed cases of Covid-19 reported at 26 August 2020

Area	Total cases	Rate per 100,000	95% CI	
			Lower CI	Upper CI
Cambridge	374	299.7	270.8	331.6
East Cambridgeshire	208	231.5	202.2	265.1
Fenland	511	501.7	460.2	547.0
Huntingdonshire	947	532.1	499.4	567.0
South Cambridgeshire	388	243.9	220.8	269.4
Cambridgeshire	2,428	371.5	357.1	386.6
Peterborough	1,583	782.7	745.2	822.0
East of England	26,198	420.1	415.1	425.2
England	284,155	504.8	503.0	506.7

Notes: Rate per 100,000 resident population, crude rates calculated using mid-year 2019 population estimates

Last updated on Wednesday 26 August 2020 at 4:04pm. Figures are from pillar 1 and pillar 2 testing.

	Statistically significantly better than England
	Statistically similar to England
	Statistically significantly worse than England

Source: Public Health England (PHE), <https://coronavirus.data.gov.uk/>

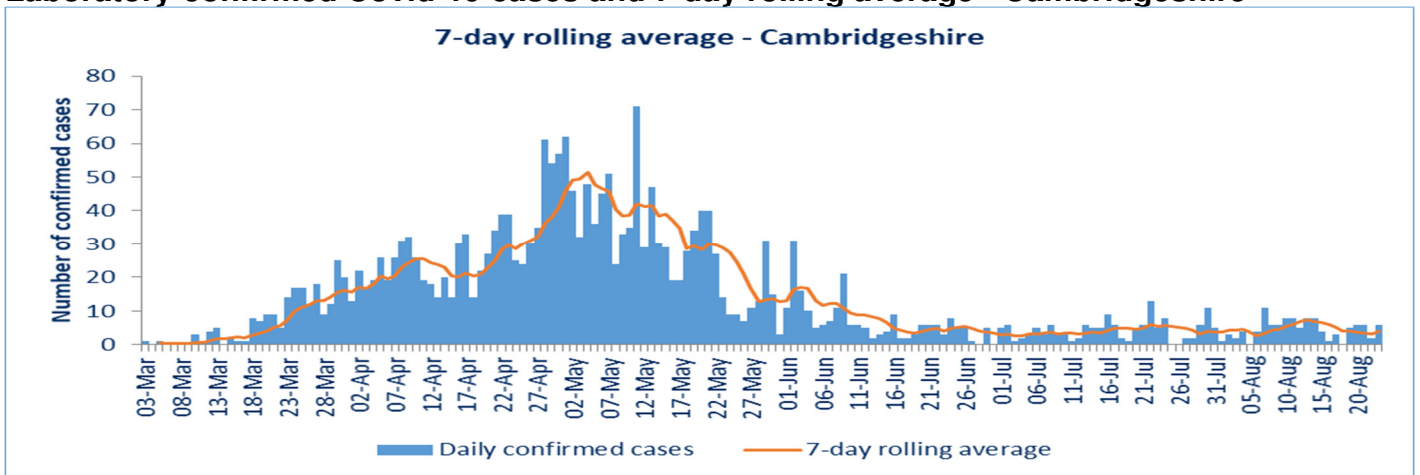
Key points:

- The cumulative rates of confirmed cases of Covid-19 per 100,000 population are statistically significantly lower in Cambridgeshire (371.5) when compared to the England average (504.8).
- Of the Cambridgeshire districts, the cumulative rate of confirmed cases of Covid-19 per 100,000 population in Fenland (501.7) and Huntingdonshire (532.1) is statistically similar to the national average. The rates in Huntingdonshire and Fenland are largely related to cases in particular settings, such as care homes, hospitals, schools and workplaces, and these have been actively managed locally, working with partners and Public Health England.

¹ Pillar 1 is testing in laboratories - so mainly for hospital patients, healthcare workers and care home residents. Pillar 2 testing is processed in national laboratories and is mainly tests booked by individuals in the community - such as the tests available at the drive through site in Peterborough Showground, the postal tests made available through the national Test and Trace website, and whole care home testing of staff and residents.

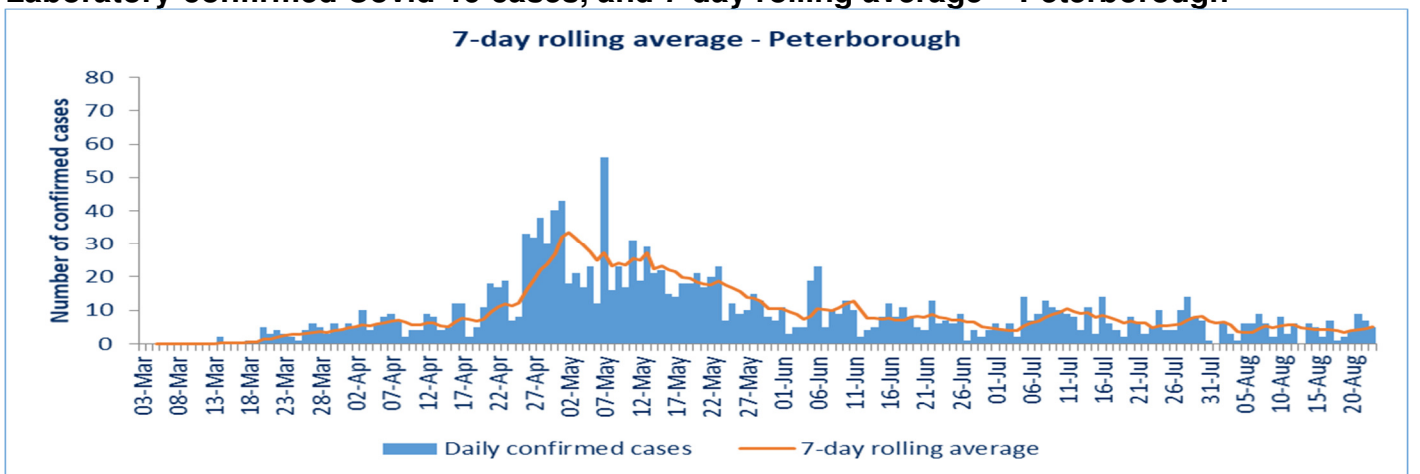
- The cumulative rate of confirmed cases in Peterborough (782.7) is statistically significantly higher than the national rate. The higher rate in Peterborough has been, in part, driven by the testing completed under pillar 2. This is part of an ongoing management arrangement with Public Health England and partners. The situation is also considered in daily surveillance and outbreak management meetings and appropriate action is being taken in settings and impacted communities.

Laboratory-confirmed Covid-19 cases and 7-day rolling average - Cambridgeshire



Notes: Last updated on Wednesday 26 August 2020 at 4:04pm. Figures are from pillar 1 and pillar 2 testing.
 Source: Public Health England (PHE), <https://coronavirus.data.gov.uk/>

Laboratory-confirmed Covid-19 cases, and 7-day rolling average – Peterborough



Notes: Last updated on Wednesday 26 August 2020 at 4:04pm. Figures are from pillar 1 and pillar 2 testing.
 Source: Public Health England (PHE), <https://coronavirus.data.gov.uk/>

Key points:

- The 7 day rolling average of confirmed cases for each areas across Cambridgeshire and Peterborough show a declining trend since the respective peak in Covid-19 cases overall. However, there is an upturn in the recent days for Peterborough.

Weekly confirmed positive Covid-19 cases, Cambridgeshire and Peterborough, at 26 August 2020 (most recent 8 recording periods)

Area	Date, week starting								Total (most recent 8 weeks)	Total*
	29-Jun	06-Jul	13-Jul	20-Jul	27-Jul	03-Aug	10-Aug	17-Aug		
Cambridge	4	5	3	11	6	11	12	6	58	374
East Cambridgeshire	3	0	2	0	1	1	7	5	19	208
Fenland	6	6	7	9	7	5	4	4	48	511
Huntingdonshire	5	3	10	12	11	13	15	8	77	947
South Cambridgeshire	4	9	12	5	5	3	4	5	47	387
Cambridgeshire	22	23	34	37	30	33	42	28	249	2,427
Peterborough	38	67	44	40	46	33	30	35	333	1,579

Notes: Each weekly total refers to reports in the period Monday to the following Sunday (e.g. 03 Aug refers to period 3-9 Aug). Last updated on Wednesday 26 August 2020 at 4:04pm. Figures are from pillar 1 and pillar 2 testing.

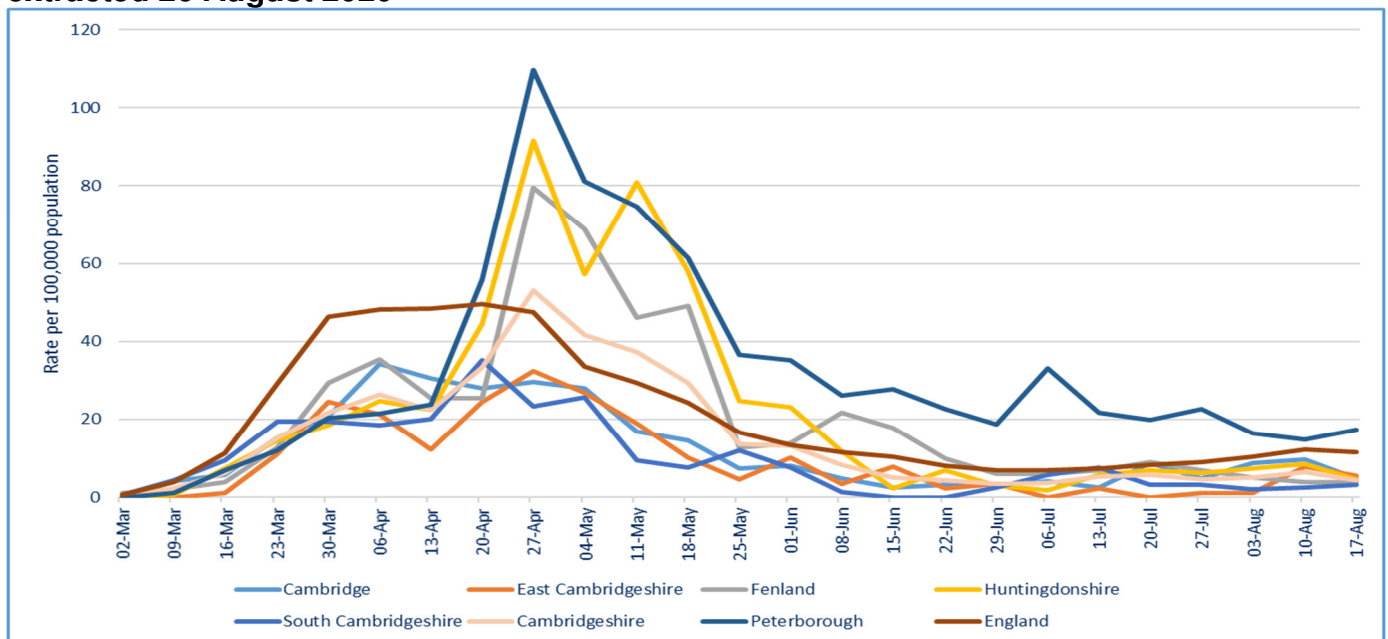
*The total numbers refer to the total of all confirmed positive Covid-19 cases from the week starting 2 Mar 2020 until the week starting 17 August 2020. For reference, the first recording point was the week starting 2 March. This table only shows the most recent 8 recording periods.

Source: Public Health England (PHE), <https://coronavirus.data.gov.uk/>

Key points:

- For Cambridgeshire and Peterborough combined there were 63 confirmed positive Covid-19 cases in the last reporting week (minus 9 compared to the previous week). This was 28 confirmed positive Covid-19 cases in Cambridgeshire and 35 in Peterborough (+5 for Peterborough compared to the previous week).
- There were an increase in number of cases in South Cambridgeshire (+1) in the last recording week.

Weekly rates of Covid-19 cases per 100,000 population, up to week 17 – 23 August, data extracted 26 August 2020



Notes: Rate per 100,000 resident population, crude rates calculated using mid-year 2019 population estimates

Last updated on Wednesday 26 August 2020 at 4:04pm. Figures are from pillar 1 and pillar 2 testing.

Key points:

- Since the peaks in April, data shows an overall declining trend for the weekly rates of confirmed Covid-19 cases per 100,000 population across each area. However, South Cambridgeshire and Peterborough have had a slight increase in the rate of Covid-19 positive cases in the most recent reporting week.

Provisional number of deaths occurring related to Covid-19 in Cambridgeshire and Peterborough residents, and proportions occurring in care homes, in week ending 14 August 2020 (week 33)

Local authority name	Place of death							% in care homes - Cambridgeshire & Peterborough local authorities	% in care homes - England & Wales
	Home	Hospital	Care home	Hospice	Other communal establishment	Elsewhere	All settings		
Cambridge	0	0	0	0	0	0	0	0%	34%
East Cambridgeshire	0	0	0	0	0	0	0	0%	34%
Fenland	0	0	0	0	0	0	0	0%	34%
Huntingdonshire	0	1	1	0	0	0	2	50%	34%
South Cambridgeshire	0	0	0	0	0	0	0	0%	34%
Cambridgeshire	0	1	1	0	0	0	2	50%	34%
Peterborough	0	1	1	0	0	0	2	50%	34%
Cambridgeshire & Peterborough	0	2	2	0	0	0	4	50%	34%

Notes: ONS recording Week 33 relates to deaths occurring week ending 14 August, registered up to 22 August 2020

Source: ONS, File name = lahbttablesweek33.xlsx, released 25 August 2020

Key points:

- ONS recording Week 33 (ending Friday 14 August 2020) there were 4 Covid-19 related deaths across Cambridgeshire and Peterborough. Of those 2 were in Huntingdonshire and 2 in Peterborough. Both Huntingdonshire and Peterborough had 1 death in a care home and 1 hospital death each.
- In Week 33, the percentage of Covid-19 related deaths which occurred in a care home setting was 34% nationally.

Cumulative number of Covid-19 deaths occurring up to 14 August 2020, by place of death

Local authority name	Place of death						
	Home	Hospital	Care home	Hospice	Other communal establishment	Elsewhere	All settings
Cambridge	3	35	43	1	0	0	82
East Cambridgeshire	3	31	16	1	0	0	51
Fenland	3	61	16	1	0	0	81
Huntingdonshire	9	89	35	0	0	1	134
South Cambridgeshire	2	38	21	0	0	0	61
Cambridgeshire	20	254	131	3	0	1	409
Peterborough	5	72	28	1	0	1	107
Cambridgeshire & Peterborough	25	326	159	4	0	2	516

Notes: ONS recording Week 33 relates to deaths occurring week ending 14 August, registered up to 22 August 2020

Schools open their doors after an academic year like no other!

Children and young people across the county have sharpened their pencils, polished their shoes and dug out their schoolbags, as many return to school. While schools in Cambridgeshire and Peterborough led the way in remaining open throughout lockdown for vulnerable children and those of keyworkers, the majority of our school-aged children have not set foot in a classroom since schools went into lockdown on 20th March. In many cases parents have stepped into the role of educators, helping their children with online learning, and fitting this in around their own lives. The upshot of most of our schools remaining open has been the knowledge and experience they

have gained in adapting and adding new measures to ensure a safe environment. Our schools have been working in social bubbles for months, and are well versed in knowing how to keep people safe. Every school in Cambridgeshire and Peterborough was asked to work through a rigorous risk assessment, bespoke to their school. They have thought of everything and thought again.

There is a [helpful guide](#) to support parents and young people as they transition back into formal education. In it is clear information on some of the common things parents ask about every year, such as transport, attendance, free school meals, etc. There is also a point of clarifying the Test & Trace process.

Cambridgeshire leads the way for future proof digital connectivity

Cambridgeshire County Council has been recognised by the Government as a leading authority for its 'barrier busting' work to attract investment in the fastest, most reliable fibre broadband networks to support businesses and communities across Cambridgeshire and Peterborough. The work of the Connecting Cambridgeshire digital connectivity programme to 'effectively encourage the deployment of next generation gigabit broadband networks in rural and urban areas' is cited in a letter to all local authorities from the Minister for Regional Growth and Local Government Simon Clarke and Digital Minister Matt Warman. The letter highlights the importance of digital connectivity for economic growth and social inclusion, which is vital during the Covid-19 pandemic and for recovery, and encourages other local authorities to follow the excellent examples of work by Cambridgeshire and Kent county council members and officers. The Connecting Cambridgeshire digital connectivity programme, led by Cambridgeshire County Council, is significantly improving broadband, mobile and public access WiFi coverage, whilst securing future proof full fibre and 5G networks to take advantage of emerging technology.

Superfast broadband coverage across Cambridgeshire and Peterborough is now over 98% and the programme is aiming to achieve over 30% full fibre coverage by 2022, through a mix of direct intervention and stimulating the market to provide commercial coverage. Connecting Cambridgeshire was among the first in the country to set up a dedicated Enabling Digital Delivery (EDD) service to remove barriers to the delivery of future-proof digital connectivity, with additional funding from the Cambridgeshire & Peterborough Combined Authority. The team facilitates private sector investment for full fibre networks and next generation mobile phone coverage across the area. The EDD service is working with network providers, telecoms operators, housing developers, and council teams to resolve a wide range of fixed and mobile infrastructure issues including wayleaves, street works permits, and infrastructure problems and planning. The service is being used as an exemplar for other local authorities, and has developed a Streetworks Guide to share learning and best practice about working collaboratively with contractors to maximise efficient use of resources and minimise conflicts, delay and costs.

Cambridgeshire registration service bounce back from lockdown



The county council's registration service team have been working hard to recover as quickly as possible following lockdown to help the thousands of customers directly affected.

When lockdown began on 23 March, Cambridgeshire County Council's registration team had to make some huge changes - death registrations were carried out over the phone for the first time in history and birth registrations and ceremonies (including marriages, civil partnerships and citizenship) had to be put on hold. This resulted in a backlog of appointments, and now birth registrations and ceremonies have resumed, the team have been working hard to catch up as quickly as possible. The process of carrying out death registrations via telephone appointments has worked exceptionally well for all those involved – especially bereaved families, who now do not have to travel to come into an

office in Cambridgeshire to register a death. This is something the service is campaigning to keep for the longer term.

Regarding marriages and civil partnerships, the team have dealt with at least 30,000 customer queries as government guidance has been updated and changed. The 73 Approved Venues across the county have also been kept informed throughout. The team has been travelling the world via Skype for some ceremonies, with one live streaming going to a bride's parents in China.

County Hub reflects on its success!

Since March the County Covid-19 Coordination Hub has been staffed by volunteers and council workers who have been seconded from their normal day to day roles in order to help look after the vulnerable in our county.

At the start of the pandemic we identified 19,040 people who required our help. All were contacted by letter and phone and from this the hub has been in regular contact, mainly weekly, with 7,812 shielded people.

People asked for help in many ways; we had 7,763 direct phone calls for help and responded to 5,737 direct emails asking for help. Help came in all kinds of forms. For example, the hub delivered 3,312 food packages and we referred 806 people for befriending support via the Red Cross.

Initially the hub was geared up for practical hands on support such as food packages and delivery of medication, but it quickly became apparent that mental health and loneliness and isolation were additional concerns and the service quickly responded to this. The support officers were invaluable in reaching out on a regular basis to the shielded community. Throughout July support officers worked with the community to help them with transitioning out of shielding. So far 6,185 people who have been receiving regular calls have been supported to learn new skills and processes ensuring that they are able to access food and medication for themselves.

Whilst the hub has paused there is still lots of information for people who have been shielding on the website of Cambridgeshire County Council. As well as information about the support that is on offer now the national programme has paused, people can find support available where they live via the Cambridgeshire Online Directory, which provide residents and families with information on organisations, services and events across Cambridgeshire. For more information visit www.cambridgeshire.gov.uk/cambridgeshire-online-directory

Community projects awarded £5m

Community projects across Cambridgeshire have been awarded a total of £5m as a special fund set up by the County Council comes to a close. A total of 6 initiatives will receive funding in the latest round of applications - the allocations were agreed by the County Council's Communities and Partnership Committee, which met on Thursday (3/09/2020). The Community Capital Fund, which aims to create opportunities and improve lives and skills across the county, was launched by Cambridgeshire County Council at the start of April 2020 with the first recipients announced in May. The fund may contribute up to £500,000 capital funding for projects which can address issues which are a specific priority for the local community, address inequality of access to services or activities, and implement community involvement in delivery or design of the project. Since its launch 63 applications have been received, requesting a total of £9,753,587 with 35 projects have been granted funding totalling £5m from a £5m budget.

Some of the projects granted funding by the committee are:

- £198,000 to extend the Community Hall in Gorefield
- Up to £10,000 for new audio/visual equipment at Hilton Village Hall
- £20,000 for new playground equipment for Eversden Parish Council
- Up to £150,000 for Market Place enhancements in Wisbech
- £88,855 for Hauxton Village Hall
- £50,000 for the Brampton's Men's Shed
- £12,000 to refurbish the Youth Centre for Stapleford and Shelford Youth Initiative
- £15,000 for outdoor equipment for Christchurch Community Centre
- £81,000 for a stable block conversion at St Mary's Church, Bartlow
- £65,000 for the Melbourn Village Hub
- £275,000 for the extension of the pavilion in Girton
- Up to £75,000 for improvements to West End Park, March
- £25,597 for the Overcote Rd project in Over.

Peter Hudson
County Councillor
Oakington, Westwick, Longstanton, Northstowe, and Over.

APPLICATION FORM

Local Highway Improvement (LHI) Initiative 2021/22

Please ensure you have read through the supporting LHI guidance available online before completing this application form. You must complete all sections, further information may be requested at the next stage of the process.

Please return your completed application to local.projects@cambridgeshire.gov.uk

Deadline for submission - **Sunday 27th September 2020.**

Date	14 September 2020	
Applicant Name	Oakington & Westwick Parish Council	
Contact Name	Laura Lawrence	
Address	4 Meadow Farm Close Oakington Cambridge CB24 3AS	
District Area	<input type="checkbox"/> Huntingdonshire <input type="checkbox"/> Fenland	<input type="checkbox"/> East Cambridgeshire <input checked="" type="checkbox"/> South Cambridgeshire ✓ <input type="checkbox"/> Cambridge City
Email Address	clerk@oakingtonandwestwick-pc.gov.uk	
Phone Number	01223 232398	

LOCATION OF YOUR PROPOSAL:

Please send a plan showing the location of the proposal.

Implementation of 20MPH speed limit on Dry Drayton Road, Cambridge Road, Water Lane, Station Road, Cottenham Road Westwick where existing 30MPH limit is in operation. See map on additional sheet below.

OBJECTIVES OF YOUR PROPOSAL

What highway issue or improvement would you like to address?

What solution are you proposing? (e.g. Speed control, new footway, parking restrictions etc).

This proposal is to enhance the safety of pedestrians, cyclists and horse riders using the roads throughout the parish boundary.

To achieve this we are seeking a reduction in the current 30MPH zone to 20MPH.

OBJECTIVES (continued)

Oakington and Westwick suffers from excessive traffic that uses the roads through the village as rat runs to other villages. See images on additional sheet below. This is compounded by the fact that all the roads into and out of the parish are unclassified and are in a poor condition due to lack of maintenance. Pedestrians are further put at risk due to narrow pathways and overgrown hedgerows again due to lack of maintenance – this is a particular issue in Westwick. The through route from the A1307 to Cottenham via Water Lane is used by large HGVs and Tankers.

It is our contention that this proposal is fully in line with the proposed changes to the Highway Code which prioritises the safety of the pedestrian, cyclist and equestrians over vehicles.

Please attach any additional information in support of your application e.g. plans, photos or correspondence. (Maximum of 3 pages)

FINANCIAL CONTRIBUTIONS

County Council LHI funding applied for:	£ <input type="text"/>	Maximum £15,000
	+	
Applicant contribution:	£ <input type="text"/>	Minimum of 10% of total cost
	=	
Total Estimated Project Cost:	£10,000	Total of above (see indicative costs)

Please note that you must contribute at least 10% of the total cost of your proposal. These contributions can be revised at the next stage of the process, where highway engineers will work with you to refine your application. You will then be expected to approve the final version of your application for submission to the Member Assessment Panel by the end of September 2020.

COUNTY COUNCILLOR

Please confirm below that you have already discussed this application with your local County Councillor, and that they are aware of, and support your bid. To find your local County Councillor, please visit our [website](#).

Please outline how your proposal fulfills the following aims of the LHI Initiative;

PERSISTENT PROBLEM: (see guidance online - [Click here](#))

How does your proposal aim to address the problem and to what degree will it resolve or improve it?

Reducing the speed of vehicles throughout the current 30MPH zone will enhance the safety of pedestrians, cyclists and equestrians

ROAD SAFETY: (see guidance online - [Click here](#))

How will your proposal contribute to improving road safety?

Reduction in the possibility of accidents and increased perception of safety – this would be a preventive action. This will be supported by the occasional use of the Speed Camera currently available to the Parish Council alongside a separate bid to the A14 Legacy fund for money to implement additional physical speed reduction measures.

COMMUNITY IMPROVEMENT: (see guidance online - [Click here](#))

How does your proposal provide community improvement?

An improved perception of safety would potentially lead to more people walking or cycling throughout the parish.

This LHI application is a joint proposal from the Oakington and Westwick Parish Council and the Oakington and Westwick Community Plan Transport Action Group

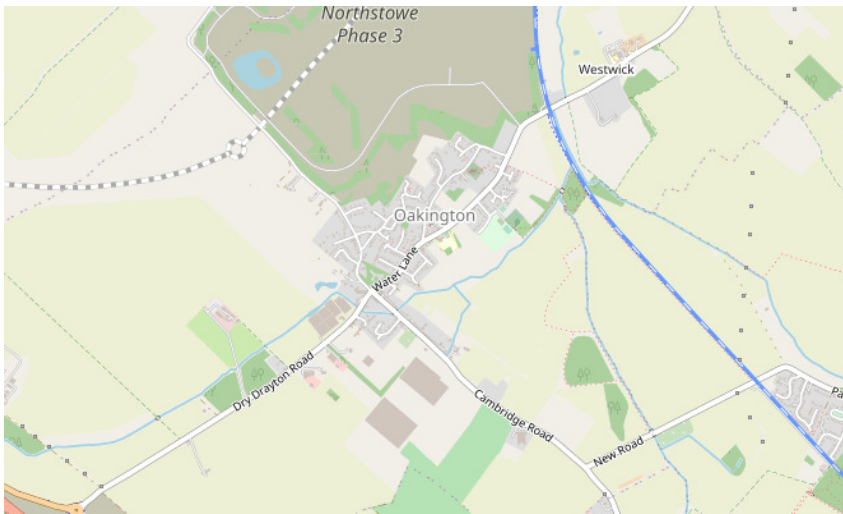
ADDED VALUE: (see guidance online - [Click here](#))

Are there any additional benefits to your proposal?

It is anticipated that an enhanced perception of the road being a safer place will encourage people to walk and cycle.

This proposal uses a document produced by the Transport Action Group entitled Oakington and Westwick - Reduction of Speed Limits Proposal 2015 (updated July 2020) in response to the Community Led Plan undertaken in the parish. The full document (11pages) can be supplied on request.

Thank you for taking the time to submit your proposal.



Oakington and Westwick Parish



Typical traffic along Water Lane - HGV's barely having enough room to pass each other without mounting the pavements. The village primary school and two pre-schools are along this stretch of highway.