

Oakington & Westwick

April/May 2021

Journal

Peace Chess

**Low Carbon
Diet**

**Rec
Development**



What's On & Notices

| | |
|----------------|---|
| Every Thursday | Ten Sing , 7:30–9pm. By Zoom. Contact jking47@aol.com |
| Thu 8 Apr | O&W WI , 7:30pm. By Zoom. "Travelling in Turkey." Helen Williams – C 232 614 |
| Mon 12 Apr | O&W Parish Council , 7:30pm. By Zoom. All invited – contact clerk@oakingtonandwestwick-pc.gov.uk |
| Mon 12 Apr | Board Games Evening , 7:30pm. By Zoom. Jenny Prince – oakingtongames@gmail.com |
| Fri 23 Apr | "Goodbye Crossways" Evening , 7:30pm. By Zoom. Adrienne Chaplin – crossways.ca@gmail.com . |
| Mon 26 Apr | Annual Parish Meeting , 7:30pm. By Zoom. All invited – contact clerk@oakingtonandwestwick-pc.gov.uk |
| Mon 10 May | O&W Parish Council , 7:30pm. By Zoom. All invited – contact clerk@oakingtonandwestwick-pc.gov.uk |
| Mon 10 May | Board Games Evening , 7:30pm. By Zoom. Jenny Prince – oakingtongames@gmail.com |
| Thu 13 May | O&W WI , 7:30pm. By Zoom. "Hospitals and Dentistry in Cambridge." Helen Williams – C 232 614 |

There is a **DEFIBRILLATOR** at the pavilion (hanging outside the patio doors). If you come across someone who has had a cardiac arrest, call 999 and start CPR, while sending someone to fetch the defibrillator – open box, take out defibrillator, shut box (alarm goes off), open defibrillator and it talks to tell you what to do.





SAVE THE DATE
Community Summer Event
Saturday 10th July
Details to follow

Journal in Large Print

Although a complete large-print version of the Journal is not currently produced, we can provide a selection of articles in large-print format for visually impaired residents. If this would be of benefit to someone you know, please contact the Journal (details on page 3).



To ask for or to offer help:
 Call/text **07902 111786** or
07375 945284

Email
owneighbours@gmail.com

- If you are self-isolating and need practical help such as a prescription collected or some shopping
- If you need some technical help getting online, using Zoom, or contacting friends and family on your mobile, tablet or computer
- If you're feeling isolated or have had enough of your own company
- If you'd like to be kept in touch with what's going on or about local services in the village
- If you could spare a little time to volunteer

If you are experiencing financial hardship or are in need:

call or text Ben on
07342 945373
 or Jo on **07714 760582**,
 or email
oak.west.hardship.fund@outlook.com
 Your confidentiality will be respected.

Cover photo: Dave Prince

QUIZ – Spot the Location!

Where in Oakington or Westwick was this photograph taken?



Answer to quiz in the last Journal on page 24.

BIN DAYS

| | |
|---|------------------------------|
| Thu 1 Apr, Fri 16 Apr, Thu 29 Apr, Thu 13 May, Thu 27 May | Black bin |
| Sat 10 Apr, Thu 22 Apr, Fri 7 May, Thu 20 May | Blue & green bins |

Oakington and Westwick have a population of around 1500, similar to that of the nearest secondary school. The size of the community means that it doesn't take long to start to recognise people we meet on walks through the village. And that it's easy to get involved, whether in a group who share our interests, or by volunteering to help others or to improve what's around us.

We are looking forward to meeting up with each other, even with some restrictions still in place. It's also encouraging to see some plans for the future emerging. The Community

Association is working on some form of Social on the Rec in July. Find out more about the exciting Open Spaces project on the back page. Note that our signatures of support will help secure funding for this development of the area. Why not attend the Annual Parish meeting on 26 April? This is a good opportunity to find out more about what lies ahead for our community and what the organisations here can offer.

Irène Butlin & Jenny Prince
Editors



The Journal is published on behalf of the Oakington & Westwick Community Association, to inform residents about events, activities and issues in the parish. It's delivered free to all residents and is funded by advertising, the Parish Council and the Community Association.

Journal Team: Jenny Prince & Irène Butlin (*editors*), Jane Goodyer (*distribution manager*), Geoffrey Butlin (*adviser*), Ranko Pinter (*chair*)

Send contributions to
oakwestjournal@gmail.com
or phone: 233510 (Jenny)
or 234383 (Irène)

DEADLINE FOR JUNE/JULY
ISSUE:
Tuesday 18 May

To advertise in the Journal,
please email
oakwestjournal@gmail.com

| Adverts | For 1 year | One off |
|--------------------|------------|---------|
| Business card | £69 | £16 |
| ¼ page (portrait) | £102 | £27 |
| ½ page (landscape) | £198 | £48 |

Adverts for the next issue must be received by **11 May**.

Inclusion of an advertisement does not imply endorsement by the Oakington & Westwick Journal of the product or service advertised.

Nature Notes – A Spring Walk

Spring is in the air. If you are tempted out by the improving weather, why not try a walk from the Pavilion to Mansell and Centenary Woods?

1. **The community orchard.** Planted in 2012 and 2014: these apples, pears, cherries, plums and gages are all vintage varieties. Wild flowers will follow.

2. Pass through **the kissing gate**. Kissing gates stop cattle and only one person can pass at a time. The gentleman invites the lady first and he can demand a kiss. They often serve as entrances to church yards so coffins can be carried more easily than over a stile.



3. Follow the **avenue of trees** that takes you towards Mansell Wood. The trees are mainly field maple.

4. Half way down the avenue on your left is a 'pond' shaded by some very old sycamore trees. This was a **port** which allowed the Barnack stone for St. Andrew's Parish Church to be offloaded after it came by river on barges from Barnack, near Peterborough, in the 12th and 13th centuries.

5. Cross the bridge over **Beck Brook** into Mansell Wood. Water vole and otter have been recorded in the brook. Brooks bringing water from Histon and Impington, Girton and Bar Hill converge here.

6. **Mansell Wood** was planted in 1990 with wild cherry, hawthorn, ash, sycamore and oak. Different tree species attract different wildlife. Oak attracts more invertebrates (insects, spiders and butterflies) than other trees because of its rough bark. You are now on Cambridgeshire County Estate land and they encourage their farmers to plant grass margins around their fields as well as woodland.

7. Walk across the wooden foot bridge to the footpath on a **grass margin**. Please keep out of the crop. The farmer grows winter sown and spring sown crops of wheat and barley. Spring crops are not so thick so are better for ground nesting birds like **skylark**. You may hear skylarks singing above you.

8. The **hedge** beside the grass margin includes species like hawthorn, dogwood, elder, forsythia, spindle, dog-rose, hazel, and blackthorn. Hedges like this provide nectar when in flower, fruit and nests for birds and small mammals and corridors for safer movement of all wildlife.

9. Cross the ditch by a narrow bridge next to the large ash tree and enter **Centenary Wood** which was planted by local volunteers in 2010. It is named to commemorate 100 years of the existence of Cambridgeshire County Estates (which owns more farm land than any other county).

10. Centenary Wood is surrounded by a **hedge** to keep the wood 'warm' to encourage quicker growth of trees, to provide shelter and food for wildlife.

John Terry

Oakington
Dog Day Care Centre

★★★★★ Rated by South Cambs DC

07704 729299

www.oakingtondogdaycare.co.uk

Vist our   pages for photos of happy dogs having a lot of fun

Dry Drayton Road, Oakington, CB24 3BD



Print-Out

Litho and Digital Printing

Mono & colour copying
Plan printing
Colour inkjet up to A0

Full price list online www.print-out.co.uk

01223 232709

8-10 High Street Histon Cambridge CB24 9JD



D.K.TILL & Son in Law

COAL AND SOLID FUEL MERCHANTS

Family run business for 40 years
Coal, Logs, Charcoal, Gas, Compost

TEL, 01223 232947 David Till, 07523044521 Kevin Crisp
email, dktil@hotmail.co.uk

CROSSWAYS GARAGE
OAKINGTON

Tel: (01223) 233003

Service, Repairs & Tyre Fitting
to all Makes of Vehicles
& Light Commercial

Approved MOT Testing Station

Member of the Retail Motor Industry Federation

Van Rental

www.stuardarlingvans.co.uk

- Self drive daily van rental
- Discounts for long term rental
- Easy to reach out of town location

Stuart Darling Limited, 3 Greenside, Waterbeach, Cambridge.

Cambridge 01223 441551



Four Wheels

German Car Specialists

Mercedes-trained Staff • Servicing • Air-con • MOTs
Diagnostics • Free Collection • Courtesy Cars

Call Andy Robinson on
01223 880336 • 07720 079697
Unit 8-9 Station Yard, Fulbourn CB21 3ET

 **Alpha Car Taxi Service**

We are a local private hire taxi service based in Longstanton. We can transport you to the airport, to an event in London or locally to Cambridge.

We cater for all your transport needs however long or short they may be.

 **01954 23 23 00**

 info@alphacarsonline.co.uk

Think Taxi Think Alpha Cars



Wendy's of Girton

Private Hire Taxi Service

Short or Long Distance Travel

Taxi-card Vouchers Accepted

Local
Reliable Comfortable
Affordable

Phone: 528675
or 07815 057 202
Email: wb9wg@yahoo.co.uk



Parish Councillors

Chair: Stephen Moore

Vice-Chair: Tony Starling

John Bailey Geoffrey Butlin
Julie Grove Luis Navarro
Ranko Pinter David Reeves
Lis Warboys

Email address for all councillors
clerk@oakingtonandwestwick-pc.gov.uk

Parish Website

www.oakingtonandwestwick-pc.gov.uk

Correspondence to the Council should be addressed to the Clerk:

Mrs Laura Lawrence – Email:
clerk@oakingtonandwestwick-pc.gov.uk

Post: 4 Meadow Farm Close
Oakington CB24 3AS

Phone: 01223 232398

District Councillors

Sarah Cheung Johnson – 01954 489089
cllr.cheungjohnson@scambs.gov.uk

Alex Malyon – 01954 202859
cllr.malyon@scambs.gov.uk

County Councillor

Oakington, Westwick, Longstanton,
Northstowe & Over

Peter Hudson – 07518 417432
peter.hudson@cambridgeshire.gov.uk

Member of Parliament

Anthony Browne – 01223 662171
anthony.browne.mp@parliament.uk

VILLAGE INFORMATION

Pavilion Booking Administrator

Tony Leadley – 07936 024587
oakingtonpavilion@gmail.com

Neighbourhood Watch

Jillian Wilkinson – 01223 233 585
oakwestnhw@gmail.com

Oakington & Westwick Neighbours (OWN)

07902 111786 or 07375 945284
OWNeighbours@gmail.com

Oakington Primary School

Office – 01223 232328
office@oakington.cambs.sch.uk

Village Stores & Post Office

Raj & Kanwal Sanghera - 01223 232327

From our Parish Council Chair

Speeding. The traffic camera on Cambridge Road keeps a record of car speeds passing it and half of all cars along the road exceed the speed limit – nothing new there. However, one car was recorded passing the camera at over 100 mph! Almost impossible to believe, but the figures are in front of me. How long before that driver kills someone?

Like most drivers, I dislike speed **calming tables**, but the amount and speed of traffic passing through the village require action. After extensive consultation, the County Council Highways Department will be installing traffic calming measures within the next year.

We have held discussions with the County Council who are implementing changes to the shared-use path on Cambridge Road. Contractors, on behalf of County Council Highways Department, will soon start to **widen the shared-use path** from Gatehouse Road towards Girton as the first phase of an improvement project of the path for both cyclists and pedestrians between Oakington and Girton.

The second phase of the 'improvement' being proposed by the County Council, is to widen the path from the bridge in Oakington all the way to Gatehouse Road. For the first section, in front of the houses, this will involve the County Council using the whole width of the path *plus* the grassed verge between the path and the front garden of the houses. Further along, after the houses, the ditch will be covered over and a culvert installed for drainage.

The Parish Council has suggested that a better way to improve cycling facilities would be to locate the proposed cycle path on the opposite side of the road to the houses, running in front of the allotments. However, this has been rejected "on the grounds of practicality, cost and potential danger posed by cycles having to cross the road twice."

Homes England, the Northstowe developers, have responded to our comments about their **planning application**.

We complained amongst other things, about the so-called green separation; the proximity and height of housing nearest to Oakington; flood control measures; the proposed new road from Northstowe into Dry Drayton Road and the related impact of traffic on the village.

Essentially the response from Homes England is to justify their original application. The only obvious change has been to lower the height of the nearest single row of housing next to the village. A working party consisting of myself, Jim Bryant, Andrew Dennis, David Reeves and Chris Webster drafted a further response reiterating our concerns and disputing the justifications provided by Homes England. You can find the various documents on the South Cambs Planning Portal and the relevant planning application is 20/02171/OUT. I would strongly recommend that interested residents read the documents *Oakington Edge Edge Note* and *Oakington and Westwick Parish Council* (2/03/21). We now await the final planning decision. I will keep you informed.

Finally, three magical words – **Annual Parish Meeting**. As many of you know, each year the village is required to hold a Parish Meeting open to all voters in the village. It is an opportunity for any group in the village to speak about their activities over the year. This includes the Parish, District and County Councils, but also voluntary groups and individuals. The more people attend, the more interesting the event is, so please do come along (well, Zoom along) to find out about what is going on.

The Meeting will take place on **April 26 at 7.30pm**. Zoom invitations will be posted in the village, but if you wish to receive the Zoom link directly, please mail: clerk@oakingtonandwestwick-pc.gov.uk

Dr Stephen Moore
chair@oakingtonandwestwick-pc.gov.uk



Local Fitness Classes

SHAPE N TONE

Mondays 6.30pm, Bar Hill Chur
Wednesdays 6.30pm Bar Hill Chur

ZUMBA

Thursdays, 10.10am, Bar Hill Chur

OVER 55s CLASS

Tuesdays, 10am. Bar Hill Chur
Fridays 10am, Oak Sp Pav

£5 A CLASS
OR £40 FOR 10



ONLINE AVAILABLE CLASSES DURING LOCKDOWNS

Call Simon on 01223 236945 or visit
www.bodyinmotionpt.co.uk for info



Buttercups CHILDCARE LTD



Childcare and Early Years education for children aged 4 months to 5 years.

We are now open and following stringent Government guidance.

Staff trained in Covid-19 Awareness.

Monday to Friday, 7.30am to 6pm (excluding Bank Holidays), 50 weeks a year.

2 and 3 year old funded spaces available (including 30 hours.)

Video tour available on request.

Find us in Gladeside, Bar Hill, Cambridge, CB23 8DY.

Contact the Nursery

Phone: 01954 488081

Email: nursery@buttercupchildcareltd.co.uk



www.buttercupchildcareltd.co.uk

revolution health & fitness

Join the new revolution in Cambridge

Fully refurbished gym
New life fitness cardio and weight machines
Jordan free weights
Unlimited studio classes
New functional fitness area
Over 30 classes per week



New boxing rig and prowler track
Free fitness analysis and gym programmes
Free trial day
No contract or joining fees
Membership starts from £29 per month

Cambro Business Park,

Oakington Road,

Girton,

Cambridge. CB3 0QH

Tel: 01223 519548

Website: revolutionhealthfitnessgirton.co.uk

From our County Councillor

Flooding issues

Intensive meetings with the County Council's Environment and Sustainability Team, Anglia Water and the Environment Agency have been held regarding flooding issues – with more planned. However, my priority was the **surface water**. An extra crew has been brought in to help clear over 1600 gullies/drainage drains per week. I pushed to get us to the top of the list so in Oakington the Crossroads, Water Lane, Cambridge Road and Dry Drayton Road should all be completed soon. On top of that, the whole village system will be mapped with any repairs needed.

County Council Budget

The County Council pledged to fund improvements to footpaths and roads as the annual budget was passed. They voted through a £660.3million budget for this financial year with an increase of around £47.3million for county services. These include schools, social care, public health, highways, libraries, waste disposal and recycling.

For instance, an extra £20million has been allocated for **footpath maintenance** with half on surface treatments, such as footway repairs, and the other half on deeper treatments, such as resurfacing and reconstruction. (This is in addition to the current £1.3million annual budget for footpath maintenance.)

An extra £2.73million has been allocated towards measures to **prevent flooding and improve local biodiversity**.

These include rapid gully/drain clearing, better verge maintenance on rural roads avoiding peak flowering times, plus initiatives to provide both active and practical support for local communities to address flooding.

The County Council portion of our Council Tax will rise by 1.9%, and the Adult Social Care Precept will rise by 1% giving a total increase of 2.9%.

Self-isolation support

Almost £1million has been awarded to residents to support them to self-isolate and reduce the spread of Covid-19. The scheme has been extended until the end of June to allow the County Council to continue supporting everyone who needs assistance to self-isolate. It has also been expanded to include parents who need to have time off work to look after a child who is self-isolating. This support includes

- * a one-off payment of £500 if people lose income because of not being able to work. This payment can be made available on multiple occasions.
- * For anyone not eligible for the government support – a local discretionary fund which offers financial support to make sure people don't suffer financially.

Details are available at www.cambridgeshire.gov.uk

Peter Hudson



From our District Councillors

We again hope that you have all been staying safe and well. It is now more than a year since we entered the first lockdown and I do not think any of us expected that the restrictions would last for as long as they have. As we now are now starting to come out of the latest restrictions, we are hopeful for the Spring and Summer, but our thoughts remain with those who have been affected by Covid. We continue to thank all of those who have worked tirelessly to support our communities through this pandemic.

Covid-19 Business Support

The council is still providing advice, grants and other support for businesses disrupted by the pandemic. For information, please go to: www.scambs.gov.uk/business/coronavirus-information-for-businesses/

Call for action on Oakington Drains

We have been contacted by residents about the state of the drains in Oakington and think that action needs to be taken. We know that when it rains pools of water build up along Water Lane and at the Crossroads. We are calling on the County Council to take proper action and provide Oakington with a permanent solution. Flushing through the drains is clearly not addressing the problem. You can show your support by signing our petition here: <https://tinyurl.com/oakydrains>

We have also been working with our SCDC drainage team to clear and repair the SCDC awarded drains in the village and to ensure that landowners, including Homes England, are carrying out necessary maintenance on ditches and drains on their land. The Environment Agency have said that the rainfall recorded on Christmas Eve was at least the

3rd largest rainfall event since records began in 1850! If heavy rainfall events like this are becoming more frequent, it is essential that the drainage network is maintained to cope with extreme weather events.

Northstowe Phase 3 Amended Planning Application

Following the recent consultation, we did not feel there had been substantial changes from the original outline planning application for Northstowe Phase 3A and we have therefore maintained our objections. We have concerns regarding the lack of green separation between Oakington and Northstowe, the current proposals for the Southern Access Road East, concerns about flooding and the plans to protect biodiversity and existing habitats, particularly around the Military Lake. We also did not feel that the updated plans provided the necessary assurance that the impacts of construction on residents from noise, dust and construction traffic will be satisfactorily managed.

Email Newsletter

We have a monthly email newsletter with updates on local news as well as wider district issues.

To sign up go to: www.sclibdems.org.uk/email_signup_longstanton

As ever, feel free to contact us on these or any other issues – see details on page 5:

Sarah Cheung Johnson

Alex Malyon



COUNSELLING

Experienced, qualified,
NHS & private counsellor

Immediate appointments available

Telephone Mark on **07905 833 288**

info@thecambridgecounsellor.co.uk

www.thecambridgecounsellor.co.uk

Crossways Hair Studio

For your local hair care
professional, friendly
and always a warm welcome

Give Vanessa a call - 07746 473853

Crossways House
1 Longstanton Road, Oakington CB24 3BB



BLUE HOUSE Computer Help

SPEED UP, FIX UP, OR UPGRADE YOUR PC

COVID FRIENDLY
MOST WORK CAN
BE CARRIED OUT
REMOTELY

SAVE MONEY

GAIN SPEED

**IF IT RUNS LIKE
TREACLE, DON'T
THROW IT OUT.**

Take advantage of
our computer
optimisation and
upgrade services.

**SOME OF OUR
SERVICES:**
Getting broken
computers up and
running, even when
Windows won't start
Upgrades for extra
speed and space
Transfer your apps
and files to a new PC
Networking and
WiFi dead spots
Sync files between
devices
Virus and malware
clean-up

**LOAN OF A
LAPTOP
FOR BIGGER
JOBS**

**PROFESSIONAL
INDEMNITY AND
PUBLIC LIABILITY
INSURANCE**

REPAIRS COME WITH
A 100 DAY
GUARANTEE

We love keeping
your old
computers in
service and out
of landfill. In fact,
we can make
them work even
better
than when they
were brand new

**WANT SOME
HELP?**

01223
CALL **85 30 20**

hello@bluehouse.help | www.bluehouse.help

Find us on Facebook

BLUE HOUSE COMPUTER HELP, CAMBRIDGE ROAD, OAKINGTON

Julie Griffin Beauty Therapy

Beauty care personalised for each client

Refresh and relax with your
local Beauty Therapist in
Oakington

*Strict Covid protocols adhered
to at all times*



This is the time to prepare
for the better weather and
holidays, waxing is the ideal
treatment for smooth skin
over your holiday and this is
the perfect time to start.

The past few months of
mask wearing and winter
weather have also not been
kind to our skin so why not
treat yourself and your skin
to a luxury relaxing facial.

Free consultations and
advice given.

www.juliegriffinbeauty.co.uk

E: juliegriffinbeauty@gmail.com T: 01223 473341

79 Longstanton Road, Oakington Cambridge CB24 3AB

Transport Action Group

Oakington to Girton Shared Cycle Path



You may already have noticed that there has been some work carried out at the Gatehouse Road/Cambridge Road junction. This is part of planned improvements to the cycle route between Northstowe and Girton. When this phase is completed it should improve visibility

at the junction and the shared path from Gatehouse Road to Manor Farm Road in Girton will be wider.

Additional funding has become available for widening and improvements from Oakington Crossroads down to Gatehouse Road. Controversially, it looks as if the County Council will claim back some of the verges in front of the houses along Cambridge Road. In discussions with the County Council cycling team, TAG suggested options which we considered better, safer and better value for money for all users of the shared path, but they have been rejected. See also the Parish Council Chair's report.

East West Rail Link

Plans to re-establish the old Varsity Line are progressing. The link from Oxford to Bedford is planned to be completed by 2025. After a public consultation the Department of Transport's preferred route between Bedford and Cambridge is to enter the city via the south, with a stop at the proposed Cambridge South and then on towards Cambridge. Objections have been raised from a pressure group (CBRR) who feels strongly that a Northern Route should also be considered to include the population of Northstowe. The group has published a map showing the line leaving a new

station at Cambourne and sweeping northwards to cross the new A14 passing between the Dry Drayton Bridge and the Crematorium and following a path parallel to the Dry Drayton Road with a proposed "Northstowe" station situated just south of the Oakington village sign. The route then crosses Cambridge Road and Busway and sweeps round to pass between Histon and Cottenham to join up with Cambridge North, cutting a broad swathe through the green belt.

At a meeting between TAG and the CBRR, facilitated by our district councillors, we expressed our concerns about such a precise route being proposed that would impact on a good



proportion of the village and adversely affect the benefits of living in a village environment for the remainder. Whilst there may be a case to argue for a northern route, we countered that it should be in the form of a less specific corridor and that, if a primary reason is to serve Northstowe, the corridor should actually include Northstowe Town. It is still very early days and the Northern Route into Cambridge may yet be rejected again by Government, but it is something that needs to be monitored.

TAG usually meets monthly currently using zoom. If you would like to zoom in and join us, please contact us at the address below and we'll email the agenda and joining details to you. Our email: owcp.tag@gmail.com

Jim Bryant, Chair – 07807 184 691

Environment Action Group



Since Christmas we have continued, in our modest way, to try to improve the village environment in practical ways and by thinking about future improvements. We have continued to clean pathways making it safer especially for older folks and for people with buggies. We have recently included litter picking and we thank those volunteers who have worked with us to try and keep Oakington and Westwick clean. We could still do with a few **more volunteers**; the incentive is that you get to wear one of our glamorous yellow Baywatch jackets. The PC have helped us with the purchase of these and those wonderful stick/tweezer grip things that means you do not touch the litter with your own hands.

We are also keeping a watchful eye on potential flooding, especially in relation to the changes in Northstowe, and the condition of our road drains and pot holes. We encourage you to report problems that worry you directly to the County Council (search for 'report a highways fault').

Our planning has been about **pond improvements**. We aim to physically clear the duck weed and water meal from the surface and then install an aeration system (on order) to reduce the nutrient content of the water. We are very grateful to Crossways Garage for their cooperation.

EAG members continue to work on the **Open Spaces project** (see separate article) and we hope to get your views on verge management (please see next Journal).

We hope to improve the winter/spring displays in the flower tubs. We are in discussion with Philip at the Garden Centre who has helped to keep the displays within the PC budget. He is providing his knowledge and time in service to the village, and we are very grateful for that. It's great living in a village where people give time so freely.

In a similar vein, we continue working with Nick Harrison of the History Society to create interpretation boards explaining the history and ecology of some of our more interesting sites.

*James Youd, Co-chair
jamesyoud50@icloud.com*

Thank you

to everyone involved in the cleaning of the pathways and litter picking around the village. I understand from James Youd that at least 14 people have voluntarily taken part. They are a great asset to the village and much appreciated. CW

 300134

 **Prime
Plumbing
& Electrical**

Gas Plumbing Electrical & Maintenance Boiler Services Kitchens
22a Cambridge Road, Impington, Cambridge, CB24 9NU
Tel/Fax: 01223 237795 - Mobile: 07802 807237
primeplumbing@yahoo.co.uk

 **C. S. Barker
Builders
Oakington**

Alterations / Extensions / New Build

07714 099017 01223 237068

**Green Heat
Limited**

PHONE FOR A FREE NO OBLIGATION QUOTATION
01223 277278

Special Offer:
Free magnetic system
filter worth over
£200 with all new
boilers installed



Smart new high efficiency 'A' rated condensing boilers are over 90% efficient, and will provide you with greater comfort, saving energy and reducing fuel bills.

 Smart heating controls can add a further 4% efficiency and allows you to control your heating from your smart phone or tablet when away from your home. We also have some great solutions to improve hot water efficiency such as 'flue gas heat recovery', enabling efficiencies of nearly 100% to be achieved.

Call Green Heat now to arrange a free visit and receive some expert advice from qualified heating engineers with over 50 years experience of providing home comfort.

 **Green Heat Ltd**
The Energy Efficiency Company



Green Heat Limited: 27 Fairway, Girton, Cambs, CB3 0QF
info@greenheat.uk.com • www.greenheat.uk.com



PS Dean Roofing

Traditional Roofing Contractors

Slates, Tiles, Guttering, Chimney's and Re-pointing

Re-roofing, Repairs, Lead-work, Free Quotations

01223 572504 07752 711175

paul@psdeanroofing.co.uk www.psdeanroofing.co.uk

22 Longstanton Road, Oakington, Cambs, CB24 3BB

Oakington & Westwick Neighbours

It's been a year since the first meeting between representatives of OWN, the parish council, village churches and the village shop to discuss how best to support the communities in Oakington and Westwick in the Covid pandemic, and the beginning of the first lockdown.



Schools have now returned, urgent demands on OWN volunteers have subsided, and from 30 March 2021 the JustGiving page for making donations to OWN's Hardship Fund will cease to function after running for a year. You can still donate if you wish by contacting OWN, and you can still contact the Hardship Team for assistance: Ben 07342 945373 or Jo 07714760582, or email oak.west.hardship.fund@outlook.com.

OWN is still very much here for whoever needs us.

Incredibly, there are those who try to profit from the Covid crisis and we have reported previously on Covid scams such as pretending to be from Test and Trace or offering vaccinations in return for your contact and bank details. There have also been warnings, with the Census 2021 taking place, that criminals could pose as Census Officers to try to gain access to people's homes. If you are contacted on the doorstep, by phone or online by anyone claiming to be an official of any kind, remember that genuine callers will:

- Have official ID
- Be wearing PPE, and remain socially-distanced
- Never enter anyone's home (unless it is to legitimately read a meter)

The main thing to remember when you are contacted about anything, whether it seems to be related to Covid, the Census, your BT account, HMRC, National Insurance or whatever, is that:

You should never be asked for money at the time, and you should never give out your bank details. People have lost £1000s to criminals in this way.

If you sew, knit or crochet, we are still gathering 20cm squares for the Covid Community Quilt. So far we have about 40 squares, with more promised. The theme of the quilt is to represent the things that make us happy. The deadline will be Easter, and we hope to unveil the quilt over the summer when it will be displayed in Oakington Pavilion. Get in touch if you would like more information.



Don't forget - OWN volunteers can still fetch prescriptions, do shopping or run errands if you can't get out and about, or offer socially-distanced company if you are feeling isolated.

Contact OWN on: 07902 111786 or 07375 945284
or email owneighbours@gmail.com

Jo Bryant

"Goodbye Crossways" Evening

7:30pm, Friday 23 April

As many of you may know, less than a year after its opening in May 2019 the Crossways Community Project had to close its doors in March 2020 due to Covid-19. This was just at the time it had begun to establish itself as a friendly community hub with a lively calendar of volunteer-led activities. In view of the loss of momentum and ongoing uncertainties about its future, the team has sadly come to the conclusion that it will be best to bring the project in its current form to a close.



In order to give the Crossways project a proper send-off we will have a Zoom meeting on **Friday 23 April** to celebrate its best moments and all the new contacts made. We aim to reflect on how some of its spirit of community hospitality and creativity can be carried through in other forms. We'd like to invite everybody who was involved in some way or other in this exciting project to zoom in.

If you'd like to join us, please contact crossways.ca@gmail.com for the Zoom link.

Adrienne Chaplin, Ranko Pinter,
Alice Jondorf, Lynne McAulay (Crossways Committee)

Neighbourhood Watch

Dogs, Tools, Personal Safety



Dogs - it seems that demand for dogs and puppies is high, and that unscrupulous people are stealing dogs from gardens, and even when the owners have taken them out for a walk. Please be careful not to let your dog out of your sight, even in your enclosed gardens.

Tools - there was a recent incident of tools left on a driveway being stolen while the person working with the equipment was out of sight. This was caught on cameras, and was a blatant opportunistic theft in broad daylight. Let us be careful not to leave anything tempting on driveways or house fronts and to report any such activity to the police.

Personal Safety - we have seen reports of the recent tragic case of a young woman kidnapped while walking home at night and later murdered. Unfortunately women and girls (and boys) walking alone even in daylight are frequently approached and frightened, or subject to verbal abuse. It's important to report any such encounter to the police so that a pattern can be seen: if they are not reported the police have no idea how often they are occurring.

The Local Police Team:
South Cambridgeshire Neighbourhoods Team
Mobile: 07730 024500

Jillian Wilkinson
Oakington and Westwick Neighbourhood Watch.
oakwestnhw@gmail.com
01223 233585

Calling All Tennis Players!



Whatever your age or standard of tennis, you'll find things very relaxed at the friendly Oakington & Westwick Tennis Club. New members are always welcome and with lockdown restrictions hopefully easing a little on 29th March, singles and doubles can soon start again on our two outdoor hard courts. The subscription year runs from 1st April – 31st March and rates are £65 for a family, £45 for adults and £20 for juniors. We would particularly welcome and encourage juniors to take up the sport and the Club offers coaching at all levels for both juniors and adults. Social events, Covid restrictions allowing, include Pimm's evenings and Club night tennis BBQ. For further information, please contact oakingtontc@gmail.com.

Sue Heaver

Oakington & Westwick Short Mat Bowls Club









Hopefully from mid-May we will be able to take part in sports activities indoors. However, before our Club can meet again we will have to get clearance from the English Short Mat Bowls Association. As soon as we get permission to play, we will let everyone know. If you are interested in joining us once we are playing again, please contact Dawn on 01223 236427.

Dawn Stokes

Back soon...

Groups not able to meet at the moment due to the coronavirus situation:

- Tuesday Talk & Tea 
- Oakington & Westwick Table Tennis Club 
- Oakington & Westwick Short Mat Bowls Club 
- Oakington And Westwick History Society – postponed until September 2021 
- Oakington Garden Society – postponed until September 2021 
- Country Dancing - Jane and Kathryn hope that the Country Dance Club will be able to start up again during the Summer – Government guidelines permitting. 

Tuesday Talk & Tea



Two founding members of Oakington & Westwick Over 60's club (now Tuesday Talk & Tea), formed 1974/75, sadly died this year. Their legacy of providing a monthly get together for companionship and friendship amongst the older generation of this village was appreciated. We at TX3 try to achieve this same aim for those at home in the afternoons, but isolation, although very important, has robbed us this past year. So renewing relationships with old and new members will be very welcome I am sure, especially afternoon tea! In the meantime stay safe, strong and encouraged - life will get better.

Joan Pettit (chairperson)

Oakington and Westwick WI

And on we Zoom!

Membership of the WI now runs from April to April in any given year, so, if already a member, it's now time to renew. If not already a member, perhaps you would like to join our thriving group? A warm welcome awaits you, albeit currently a remote one, though we are ready to meet again face to face when safe to do so. New members can actually join at any time of year if you would like time to think it over. How about a taster session, joining our Zoom meeting as a guest to give us a try. Your first 'visit' is free, thereafter you can try two more sessions at £5 per meeting. Annual membership is £44. More details from myself (Helen) on C 232614 or helenwilliams5@outlook.com, or Pauline on C 233443.



Not familiar with Zoom? No worries, Pauline has given nearly all of us very patient and fail-safe tuition and is willing to do this for you too!! Could this be why we have actually gained members during Lockdown?

A full, diverse and educational (whilst often entertaining and light-hearted) programme awaits you. We choose our Speakers carefully, with our audience in mind. After the Presentation of the evening, we now break into smaller groups for a chat and catch up. Members report they have actually got to know each other better with the Zoom facility, especially as we have two Zoom meetings a month instead of the statutory monthly assembling 'of old'.

Forthcoming meetings:

- **8 April** Travelling in Turkey, J. Gibbs
- **13 May** Hospitals and Dentistry in Cambridge
- **10 June** Tina Cave and her Garden

Helen Williams, President

Welcome a New Neighbour

If somebody has moved in near you, take them a village 'Welcome' leaflet to help them feel at home. It's a good excuse to knock on the door and say hello.

Contact: Bruce Sutherland
bruceessutherland@aol.com – 01223 236665

Oakington Vikings

Football Coaches Wanted

Age groups: Little kickers and under 8s

Oakington Vikings Football Club are looking for parents/locals to volunteer to coach the next generation of children in our village.



No need for experience in coaching. We will arrange your level one FA coaching course. Everything is in place for you, and we will support you all the way.

Club Contacts – Our Teams and Coaches

- First Team James and Toby 07834 465188
- Under 16s James and Ronnie 07714 099017
- Under 12s Marcus and Josh 07866 635241
- Under 10s Winston and Toby 07968 716290
- Welfare officer Frank 07841 995713

For further details please contact
Oakingtonvikings@yahoo.com or 07834 465188.

We are all looking forward to a safe return to football from the 29th March.

James Wilson

Chess Club

Solution to the problem from the last issue: The White Rook f2- a2. Black has no tempo move, so the Queen, the only piece that can move has to move, and whichever way she goes she is unable to prevent the White Rook at a2, first to check and then to checkmate, either on a8 or h2.

I hope you enjoyed the Netflix series Queen's Gambit! For those of you who love to spread peace, friendship and collaboration in the world, there is an award-winning variant of the traditional game of chess called Paco Šako (Esperanto for 'Peace Chess'). It promotes peace, friendship and unity, by embracing your opponent's pieces rather than capturing them! It is played on a standard chess board, with standard chess pieces that interlock your pieces with your opponent's. When you 'capture' the opponent's piece or when they 'capture' yours, from then on they move in unison as a single



interlocked-multicoloured-piece, which can be played both by you and your opponent!

The next time we meet in our chess club, I hope to be able to introduce you to this fascinating variant, comprising several refreshing 'new moves'!

Ranko Pinter

Telephone Box Library

During this latest lockdown we have been fortunate in being able to keep our Book Exchange open and I know that this has been a great blessing to many of you since the charity shops and libraries have been closed. Unfortunately it is a blessing that is being abused by a small minority of villagers who are so desperate to clear out their houses that several times the floor of the box has been covered not only with books but magazines, CDs, DVDs and the odd bag of cuddly toys! This is not only very unattractive but positively dangerous as no-one can enter the box safely. In "normal times" I have access to three other secondhand book stalls and have been able to easily rotate books around in order to keep the stock fresh and interesting, but sadly the other three are closed at the moment and so the only thing I can do with books that are unwanted or in bad repair is to tip them into my black bin along with the DVDs, etc! I cannot even put them in the blue bin as apparently the glue used in some of the bindings cannot be recycled, but formerly I could put them in the "Book Box" at the Salvation Army shop where they were sold for pulping so nothing was wasted.



I'm sad to say that this is not the first time that I have had to make this plea but I would be grateful if everyone could act sensibly and only leave books when there is room for them, or we may have to re-think the use of our lovely Red Box, which would be a pity for the majority of people who benefit so much from it. As I have mentioned before, jigsaws are also popular in lockdown and we are happy to take them if they are intact and in boxes closed with sellotape. Thank you.

Liz Davis on behalf of the Parish Council

Oakington Retirement Community

We continue to explore the possibility of a retirement facility primarily for residents and parents of residents of Oakington & Westwick, with a focus on integrating it into the wider community.

Community Land Trust administration and the seeking of potential sites progress slowly. We are looking at two possible sites:

- land between Saxon Close/Meadow Farm Close and the brook;
- and the bottom end of the field between the tomato farm and the business Park.

Both of these sites are partly in the flood plain, where we would plan to build a park with a lake.

Our aims are set out on our website:
oakingtonretirementcommunity.org

Sean Moroney, Geoffrey Butlin,
Stephen Thornton (Girton)



Girton Golf Club

The Networked Golf Club

Join as a 5 day or a 7 day Member

and Play Over 60 other UK Courses for Free

Low membership rates for juniors, students and the under 30s

Ask for details of Sam Beckett's new Junior and Adult Academies

Join now – no visitors or guests can play until May 17th

Our Club House is Open Daily 9 am to 4 pm

Outside tables only from April 12th to May 17th

Please wear your masks when inside after May 17th

(all assuming Covid rules do not change)

Breakfast/lunchtime menu with daily specials

Call in for tea, coffee or something stronger

Girton Golf Club

Dodford Lane, Girton, Cambridge CB3 0QE

Tel: 01223 276169 www.girtongolf.co.uk info@girtongolf.co.uk

Follow us on Facebook, Twitter and Instagram

Girton Golf Club News

By the time you read this we should be open again. Understandably, we will not be allowing visitors or guests onto the course until 17 May, but membership is still open, so call the office if you would like to be playing too. From 12 April our bar and catering team will be serving drinks, breakfasts and lunches outside at the patio tables. It will be 17 May before we open fully indoors, with a normal menu and table service.

Our new Head Professional, Sam Beckett, is now fully ensconced and putting together his new Academies, meanwhile he is available for coaching lessons and his shop manager Fin Swan would be delighted to see you for sales of clothing and accessories plus clubs and club fitting.

Membership for Juniors, 18 and under, is only £65 per year, that represents fabulous value for money for 7 day membership. What a great birthday or Easter present!

We also offer a range of membership options for all ages with great rates for all and very attractive rates for the under 30s. The Pro Shop or office can quickly get you playing!

Our Calendar of Social Events will be starting again, so if you just want to have somewhere local that you can go for lunch, or a coffee, maybe an evening of fun and entertainment where you belong, then join us as a Social member.

Call in and chat to the bar staff or call the office for more information.

*Alan Henderson-Smith
Director and 2021 Club Captain*



Seasonal Tip from the OCOP team



Pruning your Prunus

Experts recommend that you prune apples and pears while they are dormant and plums, gages and cherries while they are growing vigorously. This is to reduce the risk of them getting diseased from the cutting. So a good time to cut your Prunus is from the end of May through to around mid-July, this can be a heart rending process as you will probably be cutting off flowering or fruiting branches! However, basically the advice is the same as we gave in an earlier journal for apples and pears. But if you are training your trees in a particular way – cordon, fan, espalier, etc., check a good gardening book or look online for the correct procedure.

If you have an old tree that has had little attention, you will probably want to do some formative pruning. You need to be careful not to remove more than 1/3 of the branches. If the tree requires a lot of work, you should spread it over a few years. You are aiming to open up the centre of the tree to let more light in and should cut branches right back to where they join the rest of the tree, not part way along their length.

You will only want to do maintenance pruning on trees that receive regular attention. Although for both, concentrate on removing dead, diseased and damaged branches first. Then look to remove any that are growing in towards the centre of the tree or across other branches – particularly if they are rubbing (as this will damage the bark). On small trees, if you wish to stimulate growth and spread, cut outside branches back to a suitable outward facing bud.

For more information or our leaflets on pruning (with pictures) email: oakcomorchards@gmail.com

Oakington Community Orchards Project Team (OCOP)

Community Association Update



At the **Community Association's AGM** at the end of January the following people agreed to serve on the CA Committee during 2021: Ranko Pinter (chair); Arthur Sillett (vice chair); Bernie Yates (treasurer); Liz Davis (membership secretary); Irène Butlin (secretary).

Warm thanks were extended to Adrienne Chaplin who stepped down after three years on the committee and to Jillian Wilkinson after one year. Adrienne particularly contributed to getting the CA Website off the ground and Jillian is continuing to head Neighbourhood Watch.

The AGM approved some updates to the Constitution and agreed to (re)introduce the Group membership subscription of £10 per annum. In return the Subs confirm membership of the CA and contribute towards the use of a professional Zoom license that is available (free) to all Groups. Group benefits also include a regular update in the Journal about their activities and a reduced fee for a pitch when the Village Day is back. Next year's AGM is 25 January 2022. The next General Meetings take place 15 June & 12 October.

Finance. Thank you to the 13 groups that have paid their Subs already - and we look forward to receiving the outstanding ones soon! The bank balance of the CA as at 9 March 2021 was £6,026.58. It should be noted that

included in this amount are annual advert payments for this year, which go towards the printing costs of the Journal (over £600 per issue).

Summer Event - 10 July. The big question for the Community Association has been whether or not to plan a Summer Get-together. However, we feel it would do us all good to have a social event celebrating the easing of restrictions, even if it is too soon for a full blown Village Day. Thoughts and ideas were discussed at the recent CA Members Meeting (23 March), but if you weren't there, we would still like to hear your suggestions and/or if you would like to volunteer to lead or to be part of a Planning Group. Please contact any of the committee members directly, or via the CA email.

Email: oakington.westwick.ca@gmail.com
Website: www.oakingtonwestwickca.org



The CA Committee

MOBILITY EQUIPMENT

SCOOTERS, WHEELCHAIRS, RISER/RECLINER
CHAIRS, BEDS, WALKERS, FOOTWEAR,
TOILET & BATHING AIDS, KITCHEN &
HOUSEHOLD AIDS, CONTINENCE CARE,
CUSHIONS, STAIRLIFTS AND MUCH MORE

HOME VISITS AVAILABLE
EQUIPMENT HIRE, SERVICING AND REPAIR
FRIENDLY AND CONSIDERATE SERVICE
GUARANTEED

Scotsdales Garden Centre
Horningssea, Cambridge
CB25 9JG

Tel: 01223 863908
www.orchard-mobility.com
Open: Monday to Saturday
9 am - 5 pm



Rothwell's
Carpet & Stone Floor Cleaning

Carpet Cleaning & Stone Floor, Upholstery, Rugs

A few points that make us stand out:

Rothwell's has been in business since 1993.

We're an honest local family firm.

Our large truck mounted machines mean
more cleaning & drying power
for the best results possible.

Members of both the NCCA and TACCA.

We will move the furniture.

100% satisfaction or it's FREE.

*Call Oliver and Max Campbell
for expert help today.*

01223 832 928 / 01638 428 060

www.Rothwells.biz



Now welcoming new residents

We can't wait to get back to some kind of ordinary, but we also don't see it as getting back to normal. We see it as getting back to better. Even better than it was before. Better procedures in place. Better conversations. Better relationships. A better understanding of ourselves and the world around us.

We are now welcoming new residents to Arlington Manor Care Home. And while we can't wait to say hello, times have changed and so have we. So, what can you expect? Call us on **01223 814900** or visit **hallmarkcarehomes.co.uk** for specifics on the precautions we have in place (and see what we've been up to!).



Proud to provide:
Residential • Nursing • Dementia Care

Olive Warboys

I was born in Hertfordshire and had a very happy childhood growing up with my parents and a brother. Dad worked for the LNER and mum taught at an infant school. Whilst living in Broxbourne, sadly in 1940 our house was bombed and completely destroyed. We lost everything we owned and my father was badly injured.

I met my husband, Ralph, in Hertford where he worked as a Telephone Engineer and I was a telephonist.

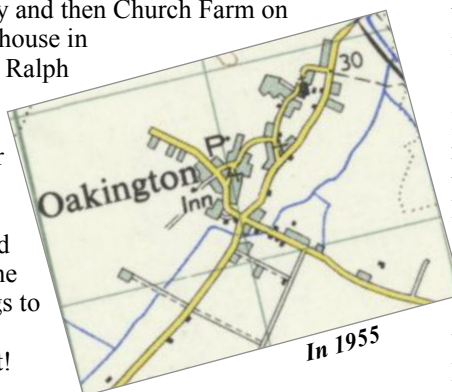
The villagers were friendly and welcoming when I came to Oakington on marrying in 1953. Food was still rationed.

We first lived at Waverley and then Church Farm on High Street and later the house in Longstanton Road where Ralph had been born.

The house had no electricity or bathroom or wc and the water came from a tap in the yard. We kept 250 chickens and many pigs. I remember the rush on Monday mornings to get the pigs ready for Cambridge Cattle Market!

Oakington was much smaller then. The RAF were still here, so the airfield had no trees and seemed very bare. I remember our windows used to shake when some of the planes were flying! The only new housing was Queen's Way and the prefabs in Broadway.

Every week the baker (Barkers), the butcher (Gawthrops) and the fishmonger called at the house and the milkman delivered daily.



(When Ralph was 4 years old he used to have to wait outside the house and tell his mother when Mr Garner, the carrier, was coming with his horse and cart from Willingham and she would then give Mr Garner her list of shopping to pick up from Cambridge!)

There were two Public Houses, a Post Office (run by Mrs Brickwood), two shops – and also a petrol pump at the Crossroads where the petrol cost 3 shillings and 6 pence a gallon.

I recall certain smells, too – fresh bread at George Barker's bakery in the High Street and strawberry jam being made at Chivers, Histon. Also the daily sight of Mr Neale's cows being driven along Water Lane to be milked. Mrs Connie Barker taught me dressmaking at IVC evening classes which led to me making clothes for all the family.

I learnt to drive in 1960 and enjoyed driving my little grey, rattling A35 van! Many people will have known Ralph through his work on the Parish Council, as a minister at the Baptist Chapel, as a local historian and in many other capacities.

We had three children all of whom still live in the village. Their children are the ninth generation to live here, the Warboys family having been in Oakington since before 1760. Four of my grandchildren still live here.

Oakington has grown a lot and I miss the fact that nearly everyone in the village used to know each other. There were some memorable characters, too – Marge Mahoney, Bill Neale, John Doggett, Cyril Smith and Snowy to name a few.

However, I appreciate all that we have here now and am very pleased to have lived in Oakington for 68 years.

With warm thanks to Olive Warboys for sharing her memories. Editors

Brookfield Groundcare

A family run business providing a quality and professional service to all aspects of hard and soft landscaping.

- Grass cutting
- Hedge trimming
- Tree surgery
- Fencing
- Paving
- Hedge & tree planting
- Turf laying
- Sports field maintenance
- Paddock maintenance



Contact us to discuss your needs

Daniel Wright 07812 670039 Office 01954 252953

Email brookfieldcontracting@gmail.com www.brookfieldgroundcare.com



STEPHEN GRAY – CeMAP

‘Your local Mortgage Broker’

Living in Oakington – Formerly of Mortgage Quest
Serving the residents of Oakington and Westwick
for 5 years

‘For all mortgage scenarios’

Residential and BTL mortgage advice
Loans for businesses
Protecting your debt and family assets

Evening and weekend appointments available

For more information, please call

Mobile – 07584 121473

Email – stephen.gray22@sky.com

Your home may be repossessed
if you do not keep up the repayments on your mortgage

ARCHITECTURAL DRAWINGS

FOR

PLANNING & BUILDING REGULATION
APPLICATIONS

EXTENSIONS, ALTERATIONS, LOFT
CONVERSIONS ETC

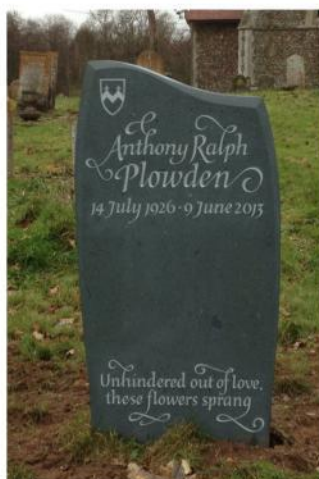
CONTACT US now to arrange a **FREE**
on-site meeting at your convenience to
discuss your project

01353 649649

mail@elydesigngroup.co.uk

ELY DESIGN GROUP

www.elydesigngroup.co.uk



**Pippa
Westoby**
LETTER CARVER

I'm a Lettering artist based in Cambridge. My work consists of hand carved memorials, house plaques, garden ornaments, and painted lettering for births, anniversaries and weddings. All my work is bespoke. You can see more of my work on my website : www.pippawestoby.co.uk or on my Facebook page : Letter Carving in Stone - Pippa Westoby.

Contact email :
pippa_westoby@yahoo.co.uk



Where are they now?

Catching up with a second group of Oakington residents who have gone to live abroad!

Irène Butlin

10th Apr 1852

EMIGRATES TO AUSTRALIA

On Wednesday last, eleven families left Oakington to go by the "Expaminondas" from Liverpool to Port Adelaide, South Australia. About ninety persons left this village last year and many others say they will go after them before they will stay here and be starved to death. When they started off they gave a good shout and said "Good by" old Hogginton. If they should live to get over safe, and settle in some place and form a village, they would not call it by that name, for they were quite tired of learning it.

Magnus Butlin - Sydney, Australia

Grew up in Longstanton Road



Private Life:

Married to Debbie, one daughter

Work: Runs child care software service

Love: Cliché, says 'the weather'; wearing shorts and going to the beach most of the year!

Dislike: Being so far from family and friends; Sydney traffic lights, when green does not always mean green

Miss: Cadbury's chocolate! The Aussie recipe doesn't melt so easily - tastes off to his refined palate

Surprise: Despite hating rowing at school, still going strong and even getting the odd medal here and there.



Darren Wisbey -

North Island, New Zealand



Grew up in Orchard Way

Private Life:

Married to Rhonda, one daughter, two step children

Work: Contracts Manager in the Construction Industry

Love (excluding family): The weather,

scenery and outdoor activity opportunities, from biking on mountain trails to skiing, boating and fishing. And the craft breweries

Miss (excluding family): The BBC; quality radio and television without adverts

Fondest memories: Primary school and bell ringing

Surprise: Completed several triathlons; 100+ mile cycle races in UK and France.

18th Mar 1854

EMIGRATION TO AUSTRALIA

Emigration Oakington, on Monday last, five families (43) in number left this village to go by the "Joseph Raven" from Liverpool to Adelaide, South Australia. About 40 more are preparing to go in a few weeks. Twenty out of this number are young men from 18 to 25. This makes nearly 200 since April 1852 out of a population of 600.

Leonie (Youd) Meyer - Hamburg, Germany

Grew up in Dry Drayton Road



Private Life:

Married Arne in Oakington Church, one son

Work: Primary school teacher, currently a full time Mum

Love: The European culture and way of

life; spending hot summers at the beach, pool or lake; and taking in the mountain scenery

Surprise: In the last 13 years moved eight times and still hasn't mastered the art of packing boxes :)



Matthew Hudson -

near Brisbane, Australia



Grew up in Longstanton Road

Private Life:

Married to Pamela; three sons, one daughter

Work: After running pubs, retrained and now works in Data Protection

Love: Australia :)

Miss: The seasons

Surprise: Was born in Australia; a gap year there turned into three. As a toddler was so keen to start primary school that he sneaked into his sister's classroom and hid.



BEST GARDENS SERVICES EST. 2010

YOUR LOCAL GARDEN MAINTENANCE,
LANDSCAPING AND TREE CARE
SERVICE



FOR A FREE QUOTE AND ADVICE
CONTACT ZAID – 07851022474
WWW.BESTGARDENS.CO.UK
BESTGARDENSSERVICES@YAHOO.CO.UK



#BESTGARDENSSERVICES

WheelieFreshBins

Your bin(s) beautifully cleaned,
disinfected and deodorised
every 4 weeks.

Nothing to pay until your bin has
been cleaned for the first time.

Tel: 01223 277747

Book online at
www.wheeliefreshbins.com



*The family
welcomes you!*



OLD CROWN
GIRTON

*Serving food
12-9.30 everyday*

THE OLD CROWN IN GIRTON HAS NEW OWNERS
AND WE ARE DELIGHTED TO WELCOME YOU THIS SUMMER



**RESTAURANT
PUB & GARDEN**

**SUNDAY ROASTS
REAL ALES**

89 HIGH ST, GIRTON, CAMBRIDGE, CB3 0QD

info@theoldcrowngirton.com 01223 277217

theoldcrowngirton.com

DON PASQUALE
ITALIAN FAMILY DINING



[theoldcrowngirton](https://www.instagram.com/theoldcrowngirton)

Book Corner

Two Tribes by Chris Becket

Two Tribes is something of a departure for author Chris Becket who is better known as a science fiction writer. In his latest novel, Zoe, an archivist in the 23rd century, is recording and analysing documents from the 21st century during the period of Brexit. Drawing on the personal diaries and Facebook archive of Michelle who runs a small hairdressing business in rural Norfolk, and Harry, an architect living in a fashionable part of London, the scene is set for an examination of two social groups; rural, predominantly working class Brexiteers, and urban middle class 'Remainers'. The couple are thrown together by circumstances into a romantic relationship where ultimately cultural differences and attitudes mean it is bound to fail. Chris doesn't reprise the well known debates which characterised Brexit; rather he explores the way the two sides ('tribes') construct and reaffirm their own perspective and will never agree with the 'other'. The advantage of a perspective from the future is that the novel is written against a backdrop where the UK has suffered environmental degradation and economic decline.

Recommended as an interesting and perceptive analysis of a key moment in British history.

Ian Pinchen



My Hobby

I first became interested in country dancing at school. The school I attended was a special one in Broadstairs, for girls mainly with health problems. As it was an all-girls school and my best friend didn't want to dance as a boy, I ended up in that part and still mainly dance as a man today.

Our school competed with others in Thanet for country dancing shields and cups. We won quite a lot and, in the end, the other schools refused to compete against us as they said we were getting special treatment. But the judges said we weren't: it was because we looked happy when dancing and carried on when we lost a shoe or went wrong.

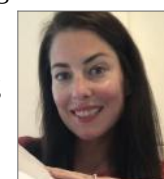
After leaving school and coming home to Oakington, I joined the Cambridge Scottish Society, the Cambridge International Club and the Cambridge University Strathspey and Reel Club. Mum and I also joined the village's Country Dance Club, which grew out of the country dancing the children at the school had enjoyed (run by John Booton and Ann Hay, the Headteacher and Deputy). This was then taken over by Yvonne Graves and Chris Loweth with the borrowing of the school's dance records. During their time in charge, we did dance demonstrations at local village summer fetes and WI meetings. We were known as the Oakington Yokels with the men (including me) dressed in beautiful smocks, trousers tied at the knee with binder twine and straw hats. The ladies wore white blouses, gingham skirts and mob caps. Unfortunately, when the Club was reduced to about seven dancers it became impracticable to carry on so it closed down.

Gingerbread Biscuits for Easter

(makes 16 depending on the size of your cutters)

200g plain flour
½ tsp bicarbonate of soda
Pinch of salt
2tsp ground ginger
75g brown sugar
75 g butter or margarine

Preheat fan oven to 150°. Line a baking tray with baking paper. Place flour, bicarbonate of soda, salt and ginger in a bowl. Warm sugar, butter and syrup over a low heat then add to the dry ingredients. Mix well and knead lightly to form a ball of dough. Roll out to a thickness of 2.5mm. Use Easter shaped cutters to cut your biscuits. Bake for 10 minutes, allow to cool slightly before lifting onto a cooling rack. Once completely cool use icing pens and decorations to decorate your biscuits.



Frances Guinee

Board Games Chest

Spyfall is a hilarious game of family fun. Each round consists of distributing one face-down card to every player. All of the cards except one depict a setting, such as a carnival or a hospital, while the last card has 'spy' on it. The round consists of asking and answering questions about the setting, and the aim for most players is to identify the spy. The spy's objective is to remain undetected and deflect attention to another player or, best of all, to guess the venue and earn a point. We've found that playing it with family members leads to an immediate recognition of who is lying, and the desperation of trying to evade detection is exquisitely funny to watch.



Alice J

In 2010, I bumped into Jane Williams in Tesco and she said that she wished the dancing could start again. As my parents had died that year and I was no longer having to care for them, I said that I would see if I could book the school once a month and start it up again. We met there until the school couldn't accommodate us any more, so then we moved to Histon Methodist Church. I am also a member of the Harston/Haslingfield Dance Club and Cambridge Contra Dance Club and many of their members come to Histon, as do friends from the Scottish Society.

Of course, owing to the Coronavirus pandemic, none of the Clubs have met since March 2020 and we all miss the dancing terribly. Country dancing, as well as keeping you fit, is very helpful for your mental health and physical interaction and any age group can join in. Lasting friendships are made and even marriages! So, when we can hold hands and dance again, why not come and join me and Jane once a month at Histon Methodist Church.

Kathryn Coles

How does your choice of food impact on your carbon footprint?

It's tempting to think that transport and heating dictate your greenhouse gas emissions but food is also significant, contributing over one third of our emissions. A few minor changes to your diet can make a lot of difference.

Modern food is about production on the farm, processing, transporting, storing, cooking and dealing with waste. All of these stages have an influence on greenhouse gas emissions and your choice of food, where and how it is produced and prepared, can have a big say in your carbon footprint. (For carbon footprint read equivalents of carbon dioxide, methane and nitric oxide, all greenhouse gases).



Meat or not?

The carbon footprint of meat is high, especially beef and lamb, both produced by ruminants and hence lots of methane emissions. Pork, turkey and chicken are much lower. Emissions from vegetables and fruit are minimal, so score well for the health of the planet as well as for human health. Any reduction in meat in your diet will benefit all your family. Eating less may allow you to buy better quality meat. Grass-fed livestock meats are healthier all round. You could consider vegetarian or vegan meals occasionally or regularly (e.g. a "meat free Monday").

In season and fresh

Out of season foods obviously cost a lot of carbon because they are transported across the planet and frozen and processed foods



add even more. So maybe you can increase your consumption of local, in-season produce and even grow some of your own for the ultimate low carbon solution.

Waste

We also waste masses of food (10 million tonnes per year in the UK). Tips include: only buy what you plan to eat, store well so it lasts longer, make meals out of leftovers and compost vegetable waste.



For more information, go to www.cambridgesustainablefood.org

John Terry

Net Zero Now

Many have heard about how South Cambridgeshire as well as many others have committed to reduce their emissions to 'net zero' by 2050. But what does this mean for us and our communities?

Net Zero Now is free training programme, run by Cambridge Carbon Footprint, which will train and support new and existing community climate leaders across the district – helping to deliver carbon reduction activities, events and communications that engage people of all backgrounds.

Net Zero Now training will commence summer 2021. Find out more and register for project updates at www.cambridgecarbonfootprint.org/net-zero-now.

New to the Archives

Once again, we have had an eclectic mix of items added to the archives, since the last Journal all with a transport theme. Who

remembers when Cambus was our local bus provider? The timetable is from 1993 and they operated from Mondays to Saturdays (except Bank Holidays), between 08.22 and 18.20 back then. The 2½ inch map dates from 1955 and it's interesting that the word 'Iscourt' is marked next to a track off Cambridge road,

which is now the entrance to Mansell Farm. If anyone can throw any light on that then please let us know. RAF Oakington had a number of entertainment evenings and the programme was for 'Rafue' devised and written by Arthur J West and Douglas Darvell. The evening was divided



into twelve parts, ranging from a production of 'Stage door Canteen' to 'So dream till dawn'. Funnily enough both Messrs West and Darvell featured in the lion share of all the acts, so no bias there then? In addition to entertainment,

sport was also very much encouraged and the 7th Sqn medal is inscribed 'RAF Oakington Six-A-Side 1959'. Finally the slide is of Gresley K3 2-6-0 61845 passing through Oakington in 1959 and heading towards Cambridge. The old signal box can be seen in the background.

Nick Harrison,
archives@oakingtonhistory.co.uk



Oakington & Westwick Seen Through the Census

21st March was Census Day in England and Wales, taking a snapshot of life in 2021 and hopefully providing useful statistics to inform policy and decision-making in the years to come. But census data is also a goldmine for historians, particularly local and family historians. Here we take a look at some census records from the villages' past, and see how the population has changed over the years.

The first census as we know it today was taken in England, Scotland and Wales in

City or Borough of _____
Parish or Township of Westwick Enumeration Schedule

| PLACE | HOUSES | | NAMES of each Person who abode therein the preceding Night. | AGE and SEX | | PROFESSION, TRADE, EMPLOYMENT, or of INDEPENDENT MEANS. | Where Born | |
|-------|----------------------------|-----------|---|-------------------|---------|--|--------------------------------|---|
| | Uninhabited or Building | Inhabited | | Males | Females | | Whether Born in same County | Whether Born in Scotland, Ireland, or Foreign Parts |
| 1. | | 1 | William Linton | 60 | | Farmer ✓ | ✓ | |
| | | | Mary Ann Do | 30 | | | | |
| | | | Elizabeth Passon | 4 | | | | |
| | | | Thomas Hall | 18 | | ✓ | | |
| | | | Thomas Carter | 20 | | ✓ | | |
| | | | John Bingle | 15 | | ✓ | | |
| | | | John Hales | 20 | | ✓ | | |

| | | | | |
|------------------|----------------|-----|----|---------------------------|
| Charles Papworth | Head | M | 44 | Miller & Farmer |
| Elizabeth Do | Wife | M | 52 | |
| Philip Do | Son | S | 22 | Miller |
| Elizabeth Do | Daughter | S | 20 | Domestic Help |
| Emma Do | Daughter | S | 14 | |
| Elizabeth Do | Daughter | S | 12 | Scholar |
| Elizabeth Head | Mother | Wid | 73 | Living on her own (Means) |
| Annie L. Brokes | Visitor | S | 31 | Widow |
| Annie Edwards | Grand Daughter | | 14 | |
| Ann Lams | Servant | S | 15 | Domestic |

It's fascinating to learn the names and occupations of the individual people who walked our streets and lived in our homes, but the census population figures give a bigger picture of life in Oakington and Westwick. However, there would have been other counts of inhabitants, dwellings and businesses although they would have counted families instead of an individual head count as we do now. Below is a brief list of statistics showing the population of Oakington and Westwick combined:

1801. There have been censuses every ten years since, with the exception of 1941, but personal information is only released a century later. The 1921 census will become available next year.

Although the goal of the census was to find out about the population as a whole, listing individuals by name was the easiest way of making sure that everyone was included. Just as this year, census day was a Sunday, usually in March or April, and the head of the household had to fill in a form, or "schedule", giving details for all the people who were under his or her roof on that date. These schedules were collected by visiting enumerators, who copied the information into enumeration books, which survive today.

Above right is from the first page for Westwick in the 1841 census, which listed 64 individuals. It reveals that William Linton, a farmer aged around 60, lived there, with Mary Ann Linton aged around 30 and four-year-old Elizabeth Passon.

The schedule became more complex in later years. Above left is an example from 1891. By now the street name for each household is provided, and if the house is named we can identify it precisely. Here's the family from Wellington House in Coles Lane: headed by Charles Papworth, who we are told is a miller and farmer from Elsworth. His wife, Elizabeth, was born in Sutton near Ely. His son and three daughters were all born in Oakington; Elizabeth's mother lived with them ("Living on her own Means") as did a granddaughter and a servant, and a visitor to the house on census day is also recorded.

| | |
|---------------------------------|--|
| Domesday Book 1086 | 55 Villeins (unfree tenants) |
| 1348 | 90 Landowners |
| 1660 | 180 Adults |
| Census data | |
| 1801 | 317 Persons |
| 1831 | 532 |
| 1851 | 694 |
| 1861 | 592 – following the loss of about 250 people, who emigrated to Australia |
| 1901 | 465 |
| Neighbourhood statistics | |
| 1951 | 567 |
| 1971 | 977 |
| 1991 | 1320 |
| 2001 | 1297 (following closure of the airfield in 1999) |
| 2011 | 1597 |

Sarah Harrison, with additional material by Jenny Prince
archives@oakingtonhistory.co.uk

Open Spaces Project

The Parish Council Open Spaces project aims to develop the Recreation Ground for all-day use, by everyone. Progress was interrupted by the pandemic, but the working group is now aiming at winning funding by autumn this year.

Many details have been worked on and the PC has used some of the 106 funds, reserved for this work, on consultants to help prepare the formalities of:

- Environment Agency approval
- SCDC planning approval
- requests for quotations
- application for charity funding.

The details of the currently planned development are shown in this site plan.

With this journal copy you will also receive an A5 flier which we hope you will be happy to sign and hand in to either the shop, the pub or the garden centre.

These signatures are vital to win the charity support, so please let us have yours, if you haven't already (we gathered a few before the pandemic struck last year).

Geoffrey Butlin
(Parish councillor and member of the EAG)

Spot the Location - Answer

The quiz photo in the last Journal shows our auntie Poppy Nicholas with her spinning top (bottom right) outside Sue and Jim's house on High Street. She's wearing her favourite brown velvet dress, so the photo was taken on a Sunday. Poppy was born in 1923 and was one of five Oakington children who died young in the early 30s diphtheria epidemic.

L Harrison & C Jordan



Your signature is
VITAL
to obtain funding

Oakington & Westwick Recreation Ground development plan

