

Oakington & Westwick Journal

January 2018

**School
Federates**

**Travel
Hub?**

**CommuniTea
Café**

WEEKLY

Mon	Toddler Rhyme Time , 9.30-11. Crossways Café, £2 per family. 0755 7090322
Mon	Monday Café , 9.30-noon. Church Hall, £1. Liz Davis C 232 745
Mon	Badminton , 4:30-5:30pm. Pavilion. Gerry Westoby
Mon	Tennis , 6-8pm. Recreation Ground. Frank Pinner – francispinner@aol.com
Mon	Oakington Singers , 8-9.30pm. Rehearsal, Church Hall. Paul Tann – C 235 567
Tue	Happy Feet , Rhythm & Rhyme, 10-11am. Church Hall. Ben Phillips - familyworker@standrewsoakington.co.uk
Tue	Table Tennis , 7.30pm. Pavilion, £2.50. Gillian L'angellier – C 234 758
Tue	Cubs , 6-7.15pm. Pavilion, £25 per term. Jo Mowatt – oakingtoncubs@yahoo.co.uk
Wed	Little Steps Toddler group, 10-11.30am. Church Hall. Ben Phillips - familyworker@standrewsoakington.co.uk
Wed	Oakington Viking Football Club , 6.30-7.30. Recreation Ground, free. James Wilson – james@selsius.co.uk
Wed	Brownies , 6-7:30pm. Pavilion. Anne Christie – oakingtonbrownies@gmail.com
Wed	Oakington Chess Café & Games Night , 7-9pm. Crossways CommuniTea Café. Ranko Pinter – ranpin@gmail.com
Thu	Short Mat Bowls , 2pm & 7.30pm. Pavilion, £4 per week. Dawn Stokes – C 236 427
Thu	Ten Sing , 7-9pm. Histon Baptist Church, £45 per year. Theresa King – jking47@aol.com
Fri	Beavers , 6-7pm. Pavilion, £30 per term. Lou Ellis – kld1001@me.com
Fri	Scouts , 7.30-9pm. Pavilion, £25 per term. Lou Ellis – kld1001@me.com

JANUARY

Thu	25 Jan	Craft Workshop . Crossways Café, £15. 10-12am. 0755 7090322
Fri	26 Jan	Country Dancing , 8pm. Histon Methodist Church Hall, £1. Kathryn Coles
Wed	31 Jan	Garden Society , 7.30pm. Church Hall. V Langford: <i>My Life with the Honey Bees</i> . Julie Grove

FEBRUARY

Thu	8 Feb	O&W WI . AGM combined with hands on Origami Craft. Church Hall. Helen Williams – C 232 614
Sat	10 Feb	Jumble Sale in aid of Humpty Dumpty Pre-school, 12-2pm. Oakington School Hall.
Mon	12 Feb	O&W Parish Council , 7.30pm. Pavilion. All invited. Clerk: L Lawrence – oakingtonpc@btinternet.com
Tue	13 Feb	Tue Talk & Tea , 2.45pm. Church Hall. <i>Musical entertainment</i> by Richard & Tim Brading. Joan Pettit
Thu	15 Feb	History Society , 7.30pm. Church Hall, £4 (non-members). <i>A Dirty History of Cambridge</i> . Julie Grove
Thu	22 Feb	O&W WI . Midwinter Feast. George & Dragon, Elsworth. Helen Williams – C 232 614
Fri	23 Feb	Country Dancing , 8pm. Histon Methodist Church Hall, £1. Kathryn Coles
Sat	24 Feb	Beetle Drive , 2.30pm. Pavilion. neighbours@oakingtonandwestwick.com
Wed	29 Feb	Garden Society , 7.30pm. Church Hall. Barry Gayton: <i>Weird Wonderfals of the Plant Kingdom</i> . Julie Grove

MARCH

Thu	8 Mar	O&W WI , 7.30pm. Church Hall. The Pearl Lady: Talk & Pearls galore to buy. Helen Williams – C 232 614
Mon	12 Mar	O&W Parish Council , 7.30pm, Pavilion. All invited. Clerk: L Lawrence – oakingtonpc@btinternet.com
Tue	13 Mar	Tuesday Talk & Tea , 2.45pm. School Hall. Peter Ashman: <i>Cambridgeshire Village Signs</i> . Joan Pettit
Thu	15 Feb	History Society . 7.30 Church Hall. <i>The David Parr House Cambridge</i> . £4 (non-members). Julie Grove
Sat	17 Mar	Ten Sing Concert , 7.30pm. Histon Baptist Church. Tickets tba. Theresa King - jking47@aol.com
Fri	23 Mar	Country Dancing , 8pm. Histon Methodist Ch. Hall, £1.
Sat	24 Feb	Beetle Drive , 2.30pm. Pavilion. neighbours@oakingtonandwestwick.com .
Wed	28 Mar	Garden Society , 7.30 Church Hall <i>The Gardens of Peckover House</i> . Julie Grove

Oakington & Westwick Journal

Published on behalf of the Oakington & Westwick Community Association to inform residents of events, activities and issues in the parish.

Journal Team

Chair: Ranko Pinter, ranpin@gmail.com

Advertising Manager:

Nykki Rogers, nykkirro@gmail.com

Editors: Jenny Prince & Irène Butlin

oakwestjournal@gmail.com

MARCH DEADLINE:

Tuesday evening, **6 March**

Happy New Year ... from the new team

You're holding the first ever all-colour issue of the Oakington & Westwick Journal! It's also the first to be put together by the new editors. We look forward to working together to make the Journal continue to be not only useful but also reflective of the lively, active community in which we all live.

The Community Association is responsible for the Journal, with the support of the Parish Council. The Journal is delivered free to every household and this would not be possible without our advertisers - so please support them, maybe mentioning you saw them in the Journal! If you work for a local business or offer a service which could benefit from this wide circulation, then do get in touch with the Advertising Manager, Nykki Rogers.

Nykki is part of the new Journal Team who particularly assist in Policy matters. However the unsung heroes of the Journal are the deliverers who put the Journal through letterboxes - we'd like to take the opportunity to thank them here. We need a few more people to help - if you could spare an hour every two months do get in touch.

We were delighted that so many of you took the time to respond to the Journal survey before Christmas - thank you! Overall people were happy with the Journal, but there were ideas for improvements, including areas of community life you'd like to hear more about. We shall feed many of these ideas in over the next few issues.

Finally we would like to thank Geoffrey Butlin, who has done a great job over his four years as editor. He expanded the Journal to 16 pages, adding the village diary, encouraging all village groups to submit articles and giving more space to the work of the Parish and District Councillors. He is disappointed that his handover coincides with the new colour printing technology!

There are new ventures afoot beyond the Journal too... in these pages you can find out about our new community cafe, a new direction for the village school, the proposed new Travel Hub, and the new Chair of the Parish Council. Enjoy reading!

Jenny Prince and Irène Butlin



Needed: one hour!

Would you - or your kids? - enjoy an hour's walk around the village once every two months, posting copies of the Journal through letterboxes? Deliverers are urgently needed, especially for **Cambridge Road, lower High Street, and Westwick**. Get in touch with the editors if you could help!

If you could only spare an hour once or twice a year, but could get to Histon on a Friday afternoon, we are also looking for people who could work in a pair to **collect and bundle the Journals** and drop them off to the deliverers.

C 233510 or oakwestjournal@gmail.com

Journal Survey: what did you think?

There were 71 responses (just over half via the online survey.) Here are some of the key findings.

76% of you read through the whole journal. All of the current range of articles were appreciated, with the most popular being reports and photos from recent events and news from the Community Plan groups (Environment, Transport and Neighbours).

"We enjoy the variety of length, style and subject of articles."

Advertisers note! 90% of respondents look at the adverts, with 40% referring back to the Journal to look up a business's details. Most readers keep their copy for a week or longer.

The overriding suggestion for making the Journal more

appealing to read was for more photos, followed by "more interesting articles".

One area of village life you felt was under-represented - children's groups, the school and pre-school were repeatedly mentioned. There were many suggestions for other things you would like to read about - interestingly several people came up with the same idea, which was features on local people or "village personalities". More on local history was another popular request.

"It keeps me connected to the village!"

Some people but not all wanted to hear more about events outside Oakington - something we currently exclude for reasons of space. Many asked for A14 and Northstowe updates (although the District Councillors regularly mention these in their report) and news/advice from the local police. Another suggestion was for more from local businesses including the garden centre, pub and shop.

Those who filled in the survey on paper cited the Journal as their source of information for what's going on in the village (97%) - 85% also rely on word of mouth, and 52% on posters. Unsurprisingly the online respondents used the oak folk facebook page (79%) as much as they did the Journal, but 66% of these online respondents also find out what's on from "word of mouth". Proving that as a community we still do a lot of talking to each other!

Jenny Prince

Deadline for March issue: Tuesday 6th March
Delivered week beginning Sat 17th March
Send contributions to oakwestjournal@gmail.com

School teams up with Dry Drayton Primary

This school year has been a particularly exciting one for Oakington Primary School because, following a partnership with Dry Drayton Primary School from September 2017, we have now federated with them. Consultation on the proposal to federate began in early September, and closed in mid November, at which point all views were carefully considered, and governing bodies of each school voted strongly in favour of federation. From 1st January we have officially become the **Dry Drayton and Oakington Federation** which will mean extra opportunities for children, staff, governors and sometimes parents in the future. I became Executive Headteacher of both schools, a Deputy Head was appointed at Oakington, and also Senior Teachers have been appointed at each school.

As part of our partnership, school choirs from each school performed at the Harvest Concert. We also share staff training days, and staff meetings once a fortnight, drawing on the strengths of each school. We have a half-termly 'creative curriculum' day on each of the two sites with a particular curriculum focus for the day, and children from each school work alongside each other, making new friends and having picnic lunch together.

Sally Daggianti

Headteacher –Oakington and Dry Drayton Primary Schools

"Federating is a significant moment in the histories of these two neighbouring schools, and we can now look forward to developing the advantages arising from the firmness and proximity of this ongoing relationship. Federating not only helps to secure both schools going into the future, it represents the start of a new era, with the prospect of enhancing the educational strengths and opportunities for the children and staff at both schools, while preserving the distinctive and special character of each."

*Edmund Buss, Chair of Oakington C of E (A) Primary
Andrew Taylor, Chair of Dry Drayton C of E (C) Primary*

School PSA Christmas Fair

The Christmas Fair was a huge success, making over £900 profit!



Humpty Dumpty's Wall



2017 proved to be an absolutely fantastic year for Oakington's Humpty Dumpty Pre-School. As one of the leading early years settings in the area, it continues to move from strength to strength. The Pre-School is now open every weekday 9 – 3pm enabling the Pre-School to offer the full free 30 hour funding for qualifying families.

An increase of children attending the Pre-School has meant an **increase of staff** and Humpty Dumpty are delighted that Vicki Long has joined the team. She comes with considerable nursery and pre-school experience and is an excellent addition to an already very strong team of staff.

November saw the Pre-School inspected by **OFSTED**. This important inspection takes place every three years. The Pre-School was absolutely thrilled to have again been graded **GOOD** in all areas, as it had been three years earlier. This means that standards are being maintained, are consistent and are of a high level.

Humpty Dumpty Pre-School is a charity. It does not receive funding for new resources, toys and equipment or building maintenance. Therefore, **fundraising** is a vital component in ensuring that it can run to the best of its ability. A small dedicated committee, led by last year's Chair, Karen Foster, ran a number of fundraising events. One of the highlights of these was the Summer Quiz Night, a huge success and so much fun that supporters have asked for it to be run again this year. Other notable events were the infamous Jumble Sale, Humpty-Dumpty's Pop-Up Bar at the Bonfire Night, the Tombola stall at the School's Christmas Fair and the Cracking Christmas Raffle.

The Co-Op Community Fund gave a grant of £1,438 to the Pre-School to develop a sensory area for children that may benefit from this specifically and it was also chosen to receive a brand new **piano** from Millers Music in their 21 Pianos giveaway. This is a fantastic resource for an early years setting. However, the piano needs more people to come and play it to accompany the children's singing, so please contact the Pre-School if you can spare an occasional half an hour to do this!

Humpty Dumpty Pre-School acknowledges the ongoing support the village shows towards it and, on behalf of their manager Laura Peat, the staff and the little people they look after, would like to offer a very big thank you!

Jessica Summers

**Humpty Dumpty's Annual Jumble Sale
Saturday 10th February**

12 - 2pm

Oakington C of E Primary School Hall

**Admission 50p - Cafe -
clothes, toys, books, home
& garden, bric-a-brac**



OWN



Happy New Year from
Oakington and Westwick
Neighbours!



Our volunteers continue to support people in the village and we have some fun and interesting events coming up this Spring. Following last year's successful and entertaining **Beetle Drive** there is to be another one on Saturday 24 February in the Pavilion at 2.30pm. Suitable for all ages from 8 to 80 and lots of fun. As ever there will be plenty of fabulous cake!

A new departure for us is the visit of a **touring theatre** group in April. Field Theatre Group will be performing "Holding Hands", a play that highlights the challenges facing families when a parent develops dementia. A powerful drama based on a true story, it is also funny in places and will strike a chord with many of us. This will also be in the Pavilion, on 13 April at 7.30pm.

Contact us on neighbours@oakingtonandwestwick.com, 07902 111786, or go to owneighbours.wordpress.com.

Jo Bryant

Transport Action Group

Travel Hub

Two of the main items that came out of the Travel and Transport village questionnaire were that the Citi 6 bus route should be extended to link directly with the guided busway and that there should be more parking available as well. After a review by the Greater Cambridge Partnership (GCP) Oakington and Westwick has been identified as one of the most suitable locations for a transport hub, based at the guided busway. For more information on the two proposed options, please go to the web address below:

<https://www.gretercambridge.org.uk/transport/transport-projects/rural-travel-hubs/>

A workshop organised by the PC has made a submission to GCP. In essence, we are looking for the linking of the Citi 6 with the busway, any car parking should benefit parish residents, improved path/cycle way to the busway, cycleway towards Cottenham. Further discussions need to be had with GCP. If you have any comments you can contact either myself at the email below or the parish council directly.

Cambridge Road Speed Sign

By now many people will have noticed that there was a movable speed sign installed in Cambridge Road just before the allotments. The sign is part of a two week trial (ending 17th Jan) to assess its usefulness. It can gather data on the volume and speed of vehicles and, in a second mode, it can indicate to drivers whether they are exceeding the speed limit. No vehicle number plate details are recorded.

Jim Bryant Chair, Transport Action Group
jim.bryant42@btinternet.com

Environment Action Group



As part of our ongoing drive to keep our village clean and tidy and to keep our paths and walkways clear and safe, early December saw enthusiastic teams of volunteers lead by James Youd **sweeping up leaves** throughout the village. We bagged up the leaves ready for them to be collected and taken away by South Cambs District Council (SCDC) in their lorries. Once again we are very grateful to all who took part, and also to Cambridgeshire County Council (CCC) for providing insurance cover under their Community Highways Volunteering Scheme. We plan to organize further working parties in the coming months and would love to hear from you if you might be interested in helping – contact James Youd on C 233639, jamesyoud51@icloud.com or John Terry on C 977476, johnterry23@hotmail.co.uk.

We are also very excited by the launch of two **Cleaner Communities** pilot schemes by SCDC, which are designed to help communities in litter picking, street sweeping and recycling. We aim to support the Parish Council in finding out if the village could benefit from being involved in these.



We have been monitoring issues such as uneven pavements, potholes and blocked drains and have reported a number of these to CCC Highways Department via their website at <https://highwaysreporting.cambridgeshire.gov.uk/>. This website is open for anyone to use, so if you are concerned about a particular **hazard** on a road or pavement you can report it there!

Our **Flood Mitigation Group** sub-committee is continuing to work with the Environment Agency and the Parish Council to reduce the risk of flooding in the village. The Parish Council has successfully applied for a flood kit of equipment such as sand bags and hydrosnakes from the Environment Agency, and Andrew Dennis attended a training course for community volunteers in the use of this in early December. We hope to be able to support the Parish Council in planning how this equipment can be best deployed in the event of a flood.

We are continuing our efforts to secure funding to clean out and restore the historic **village pond**, and with invaluable guidance from Amy Duthie we assisted the Parish Council in submitting a funding application to the Wildlife Enhancement Scheme. If this is successful, we hope it will be possible to carry out the work in January or February.

Stephanie Smith



What is Crossways CommuniTea Cafe?

It's a place for tea, coffee, global nibbles and cakes, and it's a place you can say hello to someone you've never met before

... we're all strangers before hello. It's a place you can sit and watch the world go by, listen to some music, start writing your book, and volunteer – a few hours just having tea here and saying hello, listening and talking to others is real community volunteering – connections make a huge difference to all our lives. You could also run a weekly daytime or evening meet up group for whatever you're passionate about - share your love of poetry, books, music, food, sewing, history, community activism, run classes, whatever - just call Hanna and book the Bright Activity Room for an hour or two.

Imagine a place where children from the village can go on a Saturday morning so another villager can read a story book Jackanory Style - no screens on this one - just the power of their imaginations and a power to stimulate interests in reading and books.

The cafe is a home from home – it's a convertible space for 2-20 people. It has an inbuilt **mini-cinema**, thanks to the imagination of Ashley and Py. Imagine hiring this for a special anniversary where you can sit in regal comfort, watch your favourite movie and have a pre-ordered feast for two delivered by top local caterers Boxed Events - we're not licensed so you can bring your own ... then wander home hand in hand.

We are **available to hire** from 5pm during the week and all weekend, so if you think you'd like to hire our space, get in touch! We would also love to display/sell work by local artists, so spread the word!

Oh and we've got a **hair salon** through the back established 22 years ago by the wonderful Sue and Vanessa - really caring professionals - hair and tea and a warm welcome, what more is there?

The cafe will be run as a **social enterprise** - for those unsure what that means ...we're not looking for handouts or grants from the government. We need to sell enough tea, coffee, cake and room hire to keep us open and pay the bills. Any profits will go back to the local community, chiefly in the form of employing and teaching people (mainly youngsters) to make cakes and cookies to sell in the cafe.

It's a place villagers, can walk to, locals can bus or cycle to - we'll have a drop off area to the front of the building but we want to encourage non car use - how insane are we? - you know that something has to change with our lazy love affair



with the car... make us part of your walk and always part of your hello day - we (like our inspirations Kanwal and Raj of the local Nisa shop), will always be pleased to see you and say hello - we look forward to joining them in the hard work they and countless others do to make Oakington a welcoming place to live and visit.

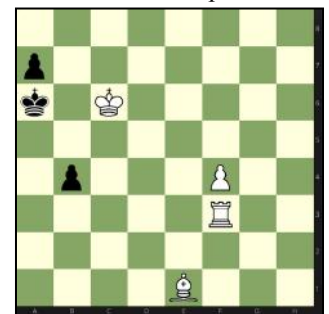
See YOU soon!

Hanna Lumley – crosswaysoakington@gmail.com

Chess Café

Chess Café will reopen its doors in 2018 at 7pm every Wednesday at the Crossways House, which is also the home of the *CommuniTea Café*. In order to broaden its appeal to the community, the Chess Café will, in addition to the traditional chess and a novel '5asideCHESS' – see www.5asidechess.com - offer a variety of **other board games**, such as draughts, scrabble, dominos, backgammon.

Chess Café offers a friendly place – both for a chess beginner, where she or he could learn about chess tactics and strategy, about a variety of so called 'fast or rapid chess' and the use of a chess clock, as well as for the seasoned players to sharpen their game by playing one another or by playing against a computer!



In the attached first chess problem of this year, white is to mate black in 2 moves. Can you see it?

Ranko Pinter – ranpin@gmail.com

Telephone Box Library

The service is proving quite popular and generally is working well.



However, recently we have had a specific problem. Although people are asked to only bring small quantities at a time, we have had several large boxes and multiple bags of books dumped all over the floor. This makes it difficult for people to get in safely to look at the shelves.

I have several other charitable outlets for secondhand books and am happy to re-cycle them. However, none of the other outlets can cope with large quantities either. If we continue to receive large quantities, I'm afraid I'll just have to bin them - which would be a shame.

On the subject of binning, there have been a few books with unsuitable subject matter and they ended up in my blue bin! A few of the DVDs that were left once met with the same fate. Please note we **only** want books.

This is a community facility so please continue to use it and enjoy it in a way that benefits everyone. Many thanks.

Liz Davis

Scouts

We are urgently looking for **new Scout Leaders** to help with an active and enthusiastic pack. If you feel that you could contribute please contact Naomi

Howell: Naomihowell28@hotmail.co.uk

Lou Ellis



Oakington Singers

We had a very busy end to 2017, with many highlights including our annual joint Christmas concert with the Oaktet to raise money for musical activities at Oakington School, and carol singing in the Grand Arcade in support of Macmillan Cancer Support – these two events raised over £700 between them, a fantastic result.

We perform a wide variety of sacred and popular music, taking part in a number of concerts and church services each year.

We rehearse every Monday evening from 8.00-9.30 pm in St Andrew's church hall, Oakington. If you are a singer yourself and fancy joining us, or if you would like us to sing at your event, please contact Paul Tann on 01223 235567.

Paul Tann



History Society

2018 gets off to a good start with Peter Clarkson talking about Scott's last fatal expedition to the Antarctic. I am always amazed at the courage of these explorers, who set off with very little other than very thick woollen clothing. The Scott exhibition was an unforgettable experience. Do come along, all welcome, for what I know will be an awe-inspiring but ultimately tragic talk.

As well as monthly talks we are involved with documenting the village archives, test-pitting around the village and ongoing work with Oakington Archaeology. We meet on the third Thursday of each month in the church hall at 7:30pm. Membership is £25 family, £15 single. Visitors are welcome - there is a small charge of £4 for non-members.

- 15 Feb. Alan Denney: A Dirty History of Cambridge
- 15 March. Tamsin Wimhurst: The David Parr House – an extraordinary Cambridge Home
- 19 April. Stephen Harper-Scott: The History of Impington Hall
- Cottenham Road Run – date to be announced

Do come along. I look forward to seeing you.

Julie Grove.

Table Tennis Club

We are a small, friendly club, of mixed ability.

We play throughout the year and meet every Tuesday at 7.30pm at the Pavilion in Queens Way and we would welcome any new players who wish to join us. We have four table tennis tables and a quantity of spare bats - all you need is a pair of trainers. Please note that an adult must accompany junior players. If you would like any further information please contact Gillian L'angellier on 01223 234758.

Mick Dorling



Tuesday Talk & Tea

The cold didn't stop us enjoying our Christmas party, especially the amazing school choir. We look forward to learning more about Butterflies in January.



Diary dates:

- 13 Feb. St Andrews Hall 2.45pm. Musical entertainment by Richard & Tim Brading
- 13 March. Oakington School Hall 2.45pm. Talk on Cambridgeshire Village Signs by Peter Ashman

Enjoy chat and English tea with us!

Joan Pettit (chairperson)

Brownies

Is your daughter nearly 7 and interested in joining Brownies? We meet Wednesday evenings and enjoy crafts, games, activities, singing, adventurous days out and unit holidays!

To register your daughter go to www.girlguiding.org.uk and follow the parents section. For enquiries contact:

Anne Christie oakingtonbrownies@gmail.com



A BIG THANK YOU to everyone who supported the Beavers, Cubs, Scouts and Brownies **Christmas Carol Concert.** We made £600 and a great time was had by all!

Garden Society



Below is a list of our programme for 2018, in time for you to copy on to your new calendar. Membership remains at £15. This entitles you to a 10% discount at the Oakington Garden Centre. (Please note this does not include the Olive Tree Café.)

We meet on the last Wednesday each month at St Andrews' Church Hall, at 7.30 until around 9.30. Our members are all keen gardeners and are willing to give help and advice to those new to gardening. We are not experts, just well versed with years of slugs, bugs and inclement weather!

I look forward to seeing you all during the year.

Julie Grove

- * **31 Jan** My life with the Honey Bees
- * **29 Feb** Weird Wonderfuls of the Plant Kingdom
- * **28 March** The Gardens of Peckover House
- * **25 April** Zsuzsa Sererzs: General Uses and Preservation of Herbs
- * **19 May** Our Annual Plant and Produce Sale

Short Mat Bowls Club



Why not start the New Year by giving short mat bowls a try at either our Thursday afternoon or evening session?

We have spare sets of bowls for you to use – all you need is a pair of smooth-soled shoes. We play at the Oakington and Westwick Sports Pavilion and the afternoon session starts at 2.00 pm and the evening session at 7.30 pm.

For further details please contact

Dawn Stokes on 01223 236427

Country Dance Club



Jane and I look forward to seeing you at the country dancing this term on 23 February and 23 March. We meet at 8.00 p.m. in Histon Methodist Church Hall, High Street, Histon. CB24 9JD, and have guest callers and live music each month.

You do not need a partner as we all dance with each other. Soft shoes or trainers recommended footwear. Adults £1.50 Accompanied Children: 50p. See you there.

Kathryn Coles

Advertising Rates

Business card size: £11 per issue, £66 pa

1/4 page (vertical): £16.50 per issue, £99 pa

1/2 page: £33 per issue, £198 pa

Please submit adverts in PDF format.

For more information please contact Nykki Rogers, Advertising Manager at nykkirro@gmail.com

From the WI



Happy New Year from Oakington and Westwick WI! Why not make a New Year's join us? Membership now available for 2018. Come along in February....as a guest or join as a member. In fact it's never too late as you can now take out membership at any time in the year and be charged the remaining months only!

Please contact Helen on 01223 232614 or Pauline on 01223 233443 for details. You can also visit our Facebook page: Oakington and Westwick Women's Institute. We meet every second Thursday in the month at 7.30pm in the **Church Hall**.

Helen Williams

- 8 Feb AGM combined with hands on Origami Craft by Taki Pinner
- 22 Feb Midwinter Feast, George & Dragon, Elsworth
- 8 Mar The Pearl Lady (Frances Benton) - entertaining talk and PEARLS GALORE to buy
- 12 Apr Willow Weaving with D Ginsberg

Cambridge Ten Sing



Coming up on **March 17th**

we have our **Annual Concert** at Histon Baptist Church, 7.30pm! It promises to be a great, entertaining night by local teenagers for the whole family.

We hope to see as many faces there as possible!

Annie MacDonald – jking47@aol.com

Road updates

A14 fly-through Published in the run-up to the first anniversary of commencement of works late last year, this film showing the end result may make you feel that all the traffic disruption and mud on the roads may be worthwhile in the end. It lasts about ten minutes (and there's a lot of blacktop!). <https://tinyurl.com/y8vb8zed>

A10 The long-awaited study from Ely to Cambridge has finally been published. Perhaps the most interesting find is that three-quarters of vehicles on the A10 start or finish somewhere beyond Ely or Cambridge. Options include a segregated public transport route, cycleways, Park & Ride, and dualling the A10 itself. The Mayor's request for a study into an M11-A47 link opened up investigation of all strategic north-south vehicle movement north of the A14, and a new road may be a possibility.

Tim Wotherspoon, District Councillor

Evening bus - citi 5

The citi 5 to Cambridge now loops round High Street / Manor Farm Close / Mill Road for its first two evening departures (18:39 & 18:59 from Manor Farm Close) - the rest only go to the Crossroads (hourly from 19:59.)

Jenny Prince

How does wildlife survive cold winters?

The River Thames froze over in 1683, 1795 and 1814, and winter fairs were held on the ice. Part of the river froze upstream in 1963, but since then winters have not been so severe. However winter is still a stressful time for wildlife.

Animals which hibernate instinctively find burrows which are deep and warm enough to survive in when air temperatures are well below zero. Many, like the dormouse, slow down their body metabolism so they only use up their fat reserves slowly. Invertebrates may overwinter as adults in protective places like cracks in bark, and some caterpillars and pupae develop some natural anti-freeze to help them hibernate without difficulties. In soil, worms and beetles burrow deeper when conditions are cold. The air particles in soil help insulate from cold, as does grass on top. A layer of snow will also provide insulation.

Amphibians, like newts, frogs and toads, hibernate under piles of wood or rocks. Water below the ice in ponds is a bit warmer than zero degrees C. Fish can even survive in ice by just moving their tails slightly to keep alive, without using up too many food reserves. It is therefore unnecessary to break ice in garden ponds and actually undesirable because it can shock the fish.



Plants can survive some weeks of cold weather especially if they belong to indigenous species. Mediterranean garden plants can be scorched or killed with weeks of harsh UK weather. Landscape gardeners often regret choosing plants that are not too hardy after cold winters.

Most farm crops come through cold winters with little damage. However, with continuous frost, some winter crops can suffer, especially barley on sandy soils where roots can become separated from the leaves. Sandy soils are drier and quickly lose their heat. Oil seed rape can lose a significant number of leaves to hungry pigeons.

Trees can suffer branch loss under the weight of heavy snow, and the ice formed in puddles between the trunk and the boughs, because it expands, can help to bring timber down. Deciduous trees have lost their leaves so do not experience water loss, and evergreen leaves lose little water because their leaves are waxy or narrow.

John Terry

Poppy Appeal Totals



Thank you to all the collectors and to those who gave so generously. The interim total is £1,678.32. £271.20 was given at the Remembrance Day church service. Well done!

Lynda Fentiman



Adverts are removed from the online version of the Journal, so here are some bonus photos... from the Environment Action Group pavement clearing, the school Christmas Fair, and the Carol Concert at the Pavilion.



Stepping down

Firstly, I would like to wish a Happy and very successful New Year to all residents of the Parish. I would also like to welcome the new editors of the Journal and express my thanks to the previous editor.

This will be my last letter to you as by the time you read this I will have resigned from the Parish Council due to health issues. I wish the new Chairman well in taking up this role. I would like to say thank you to all those who have served on the Council, or as District or County Councillors during my time as Chairman. Without the effort of all the people on the team we would be much less effective. Thank you too to all those residents in the Parish who I have been involved with during this time.

It has been a busy few years for me, from the Floods we all hate to remember in 2014 to the planning and current development work on projects such as the A14 upgrade and Northstowe. What is perhaps the most critical phase of Northstowe, Phase 3, which comes down to the Oakington north-west village boundary, should begin this year, and there will be a lot of work for the Parish Council to ensure it has minimum impact on us residents of the village. My best wishes to you all.

Mike Oakley, (ex-) Chairman

Stepping up

Sadly, Mike Oakley, our Chairman has decided to step down from the Parish Council. Mike has been an excellent Chairman and a tireless worker on behalf of the village. Only those of us who have worked directly with Mike can appreciate just how much time and effort he has contributed to the Parish Council's work in making Oakington a pleasant place to live. Thank you Mike.

With Mike's resignation, there is now a **vacancy** on the Parish Council. If you feel that you have something to contribute to village life and would like to join the Parish Council, please feel free to contact Laura Lawrence, Clerk on C 232398 or by email at oakingtonpc@btinternet.com, or speak to one of the existing Parish Councillors.

The role of the Parish Councillor is entirely voluntary, but rewarding. It is both interesting and valuable as a contribution to the life of the village. The amount of work is not onerous, although you would be expected to liaise with organisations in the village; to express views and respond to decisions of the District and County Councils; to attend Parish Council meetings; and to lend a hand in a variety of situations when called upon.

The role of the Parish Councillor is voluntary but rewarding

There appears to be some lack of awareness of the **role of the Parish Council** here in the village. The Parish Council is the lowest tier of Local Government, but it is part of government. It has a number of legal powers and undertakes numerous activities which greatly benefit the village, but may not be particularly visible – or are just taken for granted. Did you know that part of your Council Tax is levied by the Parish Council and that money is used directly

for the benefit of the village? The Recreation ground, play area and the Pavilion are the most obvious examples which we all enjoy. It also liaises with, and supports, active groups in the village, such as the Pavilion Committee, the Community Association, the Transport Action Group and many more.

For example, currently the Parish Council is working closely with the Environment Action Group and providing considerable financial support to restore the pond at the Crossroads. It is also leading an ambitious programme, in collaboration with the youth football teams in the village, to extend the Pavilion. If all that interests you – please consider applying to become a Councillor!

Many of you will have heard about The Greater Cambridge Partnership which has been given up to £500 million by the Government to help the development of the region. One of the strands of work is improving transport. Of relevance to us, is the need to give greater access to central Cambridge (and Addenbrookes) and the Partnership wish to introduce **Rural Travel Hubs**, as part of this <https://www.gretercambridge.org.uk/news/four-south-cambridgeshire-villages-ear-marked-for-transport-improvements-rev2/>.

The Parish Council has been in discussions with the Partnership about the possibility of locating one of these hubs in Oakington. The proposed Hubs might consist of a small number of parking spaces – a maximum of 40, next to the Guided Bus stop. If we proceed, we would seek controlled parking in Westwick and parts of Oakington to stop overspill and a proportion of the parking places reserved in some manner, for local residents. We are also looking to have the Citi6 bus route extended to the Guided Busway, which would become the new terminus. Further, we are aiming to gain much improved pedestrian and cycle access to the Guided Bus stop from the village. These would form part of the proposed cycleways linking Cottenham, Oakington and Dry Drayton. The decision to actually site a Rural Travel Hub in Oakington rests with the Parish Council. The Council will soon be consulting interested villagers on this.

As always, please feel free to contact the Parish Council about these or other local matters.

Stephen Moore, Chairman

Notice Board and Bench?

The Parish Council are considering funding a new notice board, and bench seat, to be located on the newly cleared ground between the village shop and Mead View.

Before we progress this idea we would like to ask people's views to find out if this is something that people would like to see. We are also consulting with Raj and Kanwal at the shop and the closest residents in Mead View to ensure we take on board everyone's views, and it would be really helpful to get some wider feedback from the village.

So, if you have a view on this proposal please do email the Parish Clerk on oakingtonpc@btinternet.com

Simon Edwards, on behalf of O & W Parish Council



Thank you to
the CA committee
and everyone who
made the Bonfire
Night possible



BONFIRE NIGHT

The Community Association raised
£980, a great total after all expenses
(including the fireworks).

Comments from Oaky Folk Facebook:

The best Bonfire Night we've had!

Well done, BBQ team!

Great fireworks! Great evening!

THANK YOU!



Crossways Community Café Opening

Hanna Lumley with Heidi Allen MP



Humpty Dumpty Pre-School Nativity Play



Beavers at Carol Concert